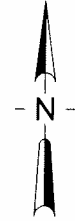
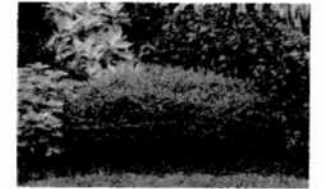


LOT 267-1-R1



ALLEMANDA

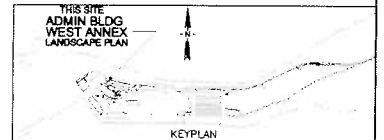


CUPHEA HYSSOPIFOLIA

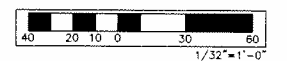


DWARF DATE PALM

**PRELIMINARY
SUBMITTAL**



GRAPHIC SCALE:



LANDSCAPING PLAN 1
SCALE: 1/32"=1'-0" LS1-1

19 ADDITIONAL
PARKING

28'-0" 30'-0"

30'-0" 30'-0" 2 30'-0" 1

ADMIN BUILDING
WEST ANNEX

SERVICE
PARKING

DRAWING REVISIONS

REVISION	DATE	BY	DESCRIPTION

DESIGNER
F. Z. DIAMZON

DETAILER
L. V. RAMOS

CHECKER
F. Z. DIAMZON

DATE
JULY 2010





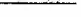
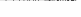

**JOSE D. LEON GUERRERO COMMERCIAL PORT
PORT AUTHORITY OF GUAM
MODERNIZATION AND EXPANSION PROGRAM
ADMINISTRATION BUILDING WEST ANNEX
LANDSCAPE PLAN**

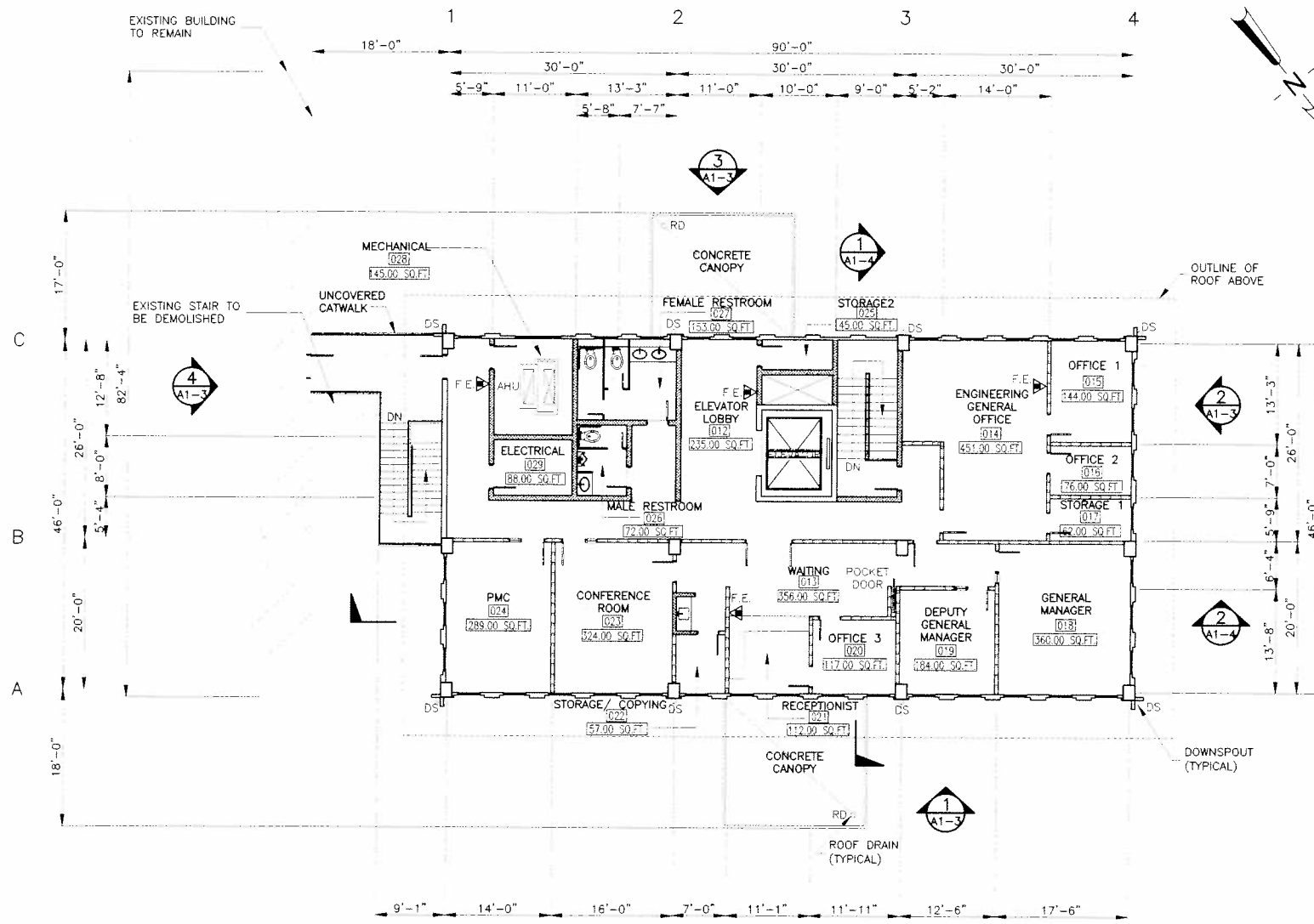
DRAWING NO.
LS1-1

SHEET NO.
246

TOTAL SHEETS
375

WALL LEGEND:


-  REINFORCED CONCRETE WALL
-  REINFORCED CONCRETE COLUMN
-  CMU WALL
-  GYPSUM WALL BOARD DRYWALL
-  INTERIOR WALL



SECOND FLOOR PLAN (1)
SCALE: 1/8"=1'-0" (A1-2)

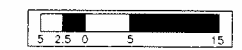
PRELIMINARY SUBMITTAL

THIS SITE ADMIN BLDG WEST ANNEX



KEYPLAN

GRAPHIC SCALE:



1/8"=1'-0"

DRAWING REVISIONS			
REVISION	DATE	BY	DESCRIPTION

DESIGNER
F. Z. DIAMZON

DETAILER
C. H. JOSE

CHECKER
P. S. REYNALDO

DATE
JULY 2010



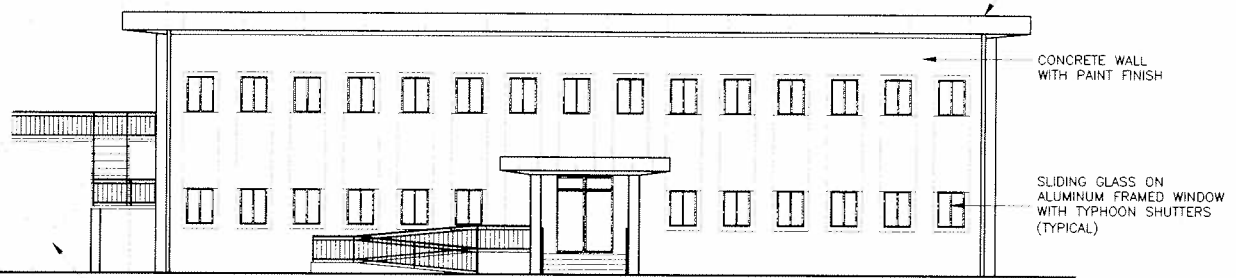
JOSE D. LEON GUERRERO COMMERCIAL PORT
PORT AUTHORITY OF GUAM
MODERNIZATION AND EXPANSION PROGRAM
ADMINISTRATION BUILDING WEST ANNEX
SECOND FLOOR PLAN

DRAWING NO.
A1-2

SHEET NO.
248

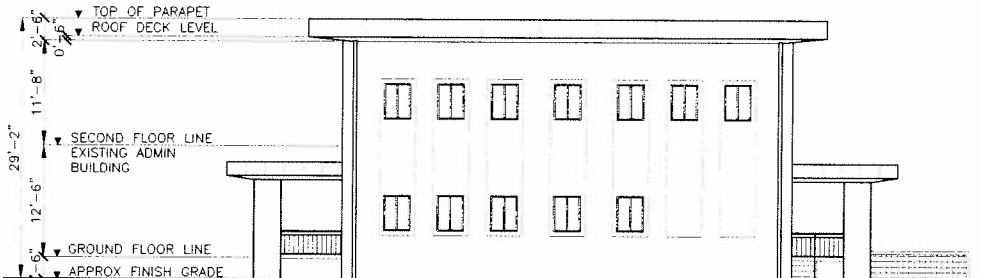
TOTAL SHEETS
375

18'-0"
5'-0"

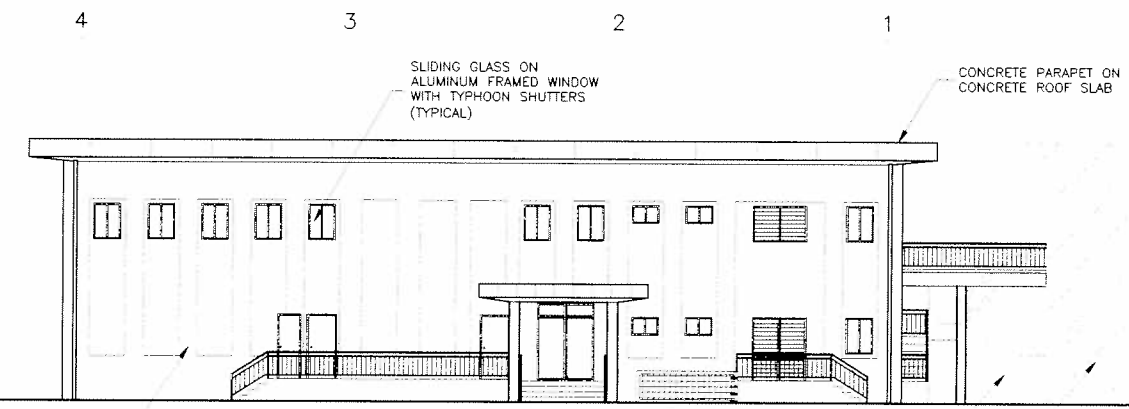


EXISTING STAIR TO BE DEMOLISHED
EXISTING BUILDING TO REMAIN

NORTH ELEVATION 1
SCALE: 1/8"=1'-0" A1-1



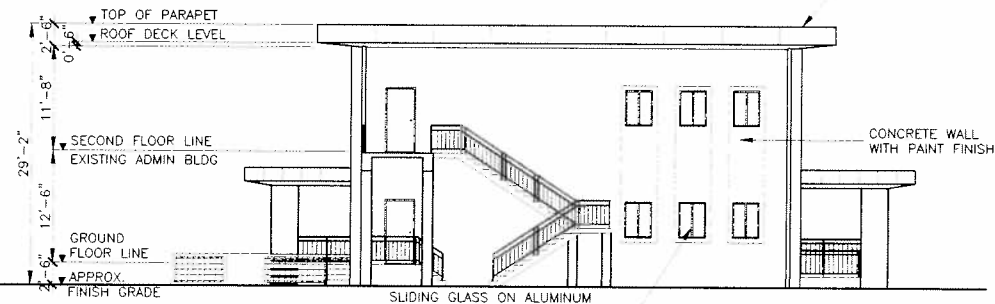
WEST ELEVATION 2
SCALE: 1/8"=1'-0" A1-1



CONCRETE WALL WITH PAINT FINISH

EXISTING STAIR TO BE DEMOLISHED
EXISTING BUILDING TO REMAIN

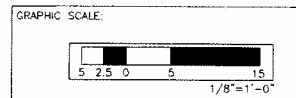
SOUTH ELEVATION 3
SCALE: 1/8"=1'-0" A1-1



CONCRETE PARAPET ON CONCRETE ROOF SLAB

EAST ELEVATION 4
SCALE: 1/8"=1'-0" A1-1

PRELIMINARY SUBMITTAL



DRAWING REVISIONS			
REVISION	DATE	BY	DESCRIPTION

DESIGNER
F. Z. DIAMZON

DETAILER
C. H. JOSE

CHECKER
F. Z. DIAMZON

DATE
JULY 2010



JOSE D. LEON GUERRERO COMMERCIAL PORT
PORT AUTHORITY OF GUAM
MODERNIZATION AND EXPANSION PROGRAM

ADMINISTRATION BUILDING WEST ANNEX
NORTH ELEVATION, WEST ELEVATION
SOUTH ELEVATION, EAST ELEVATION

DRAWING NO.
A1-3

SHEET NO.
249

TOTAL SHEETS
375

SCHEDULE OF INTERIOR FINISHES – FINISH TYPES AND COLORS

ROOM DESIGNATION	ROOM/ SPACE	FLOOR AREA (SQUARE FOOT)	FLOOR			BASE			WAINSCOT			WALL			CEILING			METAL DOORS			DOOR FRAMES			REMARKS
			MATERIAL	COLOR	TYPE	MATERIAL	COLOR	TYPE	MATERIAL	COLOR	TYPE	MATERIAL	COLOR	TYPE	MATERIAL	COLOR	TYPE	MATERIAL	COLOR	TYPE	MATERIAL	COLOR	TYPE	
001	LOBBY	177.00	VCT	-	-	VCB	-	-	CONC.	-	-	CWP	-	-	ACT	-	-	MET.	-	-	MET.	-	-	
002	HALLWAY	681.00	VCT	-	-	CONC.	-	-	CONC.	-	-	CWP	-	-	ACT	-	-	MET.	-	-	MET.	-	-	
003	PORT ENTRY/CASHIER RECEPTION	550.00	VCT	-	-	GB	-	-	CONC.	-	-	GB	-	-	ACT	-	-	MET.	-	-	MET.	-	-	
004	C & Q	219.00	VCT	-	-	GB	-	-	CONC.	-	-	GB	-	-	ACT	-	-	MET.	-	-	MET.	-	-	
005	IT	1435.00	VCT	-	-	GB	-	-	CONC.	-	-	GB	-	-	ACT	-	-	MET.	-	-	MET.	-	-	
006	ELEVATOR LOBBY	235.00	VCT	-	-	CONC.	-	-	CONC.	-	-	CWP	-	-	ACT	-	-	MET.	-	-	MET.	-	-	
007	MALE RESTROOM	72.00	MCT	-	-	CGT	-	-	CONC.	WHITE	GLOSS	CGT&P	WHITE	GLOSS	GB	-	-	MET.	-	-	MET.	-	-	TOILET PARTITION FACTORY FIN. BONE WHITE
008	FEMALE RESTROOM	139.00	MCT	-	-	CGT	-	-	CONC.	WHITE	GLOSS	CGT&P	WHITE	GLOSS	GB	-	-	MET.	-	-	MET.	-	-	
009	MECHANICAL ROOM 1	147.00	SEALER	-	-	PAINT	-	-	CONC.	-	-	CONC.	-	-	CWP	-	-	MET.	-	-	MET.	-	-	
010	MECHANICAL ROOM 2	93.00	SEALER	-	-	PAINT	-	-	CONC.	-	-	CONC.	-	-	CWP	-	-	MET.	-	-	MET.	-	-	
011	ELECTRICAL ROOM	88.00	SEALER	-	-	PAINT	-	-	CONC.	-	-	CONC.	-	-	CWP	-	-	MET.	-	-	MET.	-	-	
012	ELEVATOR LOBBY	235.00	VCT	-	-	CONC.	-	-	CONC.	-	-	CONC.	-	-	CONC.	-	-	MET.	-	-	MET.	-	-	
013	WAITING	356.00	VCT	-	-	CONC.	-	-	CONC.	-	-	CONC.	-	-	CONC.	-	-	MET.	-	-	MET.	-	-	
014	ENGINEERING GENERAL OFFICE	451.00	VCT	-	-	GB	-	-	CONC.	-	-	GB	-	-	CONC.	-	-	MET.	-	-	MET.	-	-	
015	OFFICE 1	144.00	CARPET	-	-	GB	-	-	CONC.	-	-	GB	-	-	CONC.	-	-	MET.	-	-	MET.	-	-	
016	OFFICE 2	76.00	CARPET	-	-	GB	-	-	CONC.	-	-	GB	-	-	CONC.	-	-	MET.	-	-	MET.	-	-	
017	STORAGE 1	62.00	VCT	-	-	CONC.	-	-	CONC.	-	-	CONC.	-	-	CONC.	-	-	MET.	-	-	MET.	-	-	
018	GENERAL MANAGER	360.00	CARPET	-	-	CONC.	-	-	CONC.	-	-	CONC.	-	-	CONC.	-	-	MET.	-	-	MET.	-	-	
019	DEPUTY GENERAL MANAGER	184.00	CARPET	-	-	GB	-	-	CONC.	-	-	GB	-	-	CONC.	-	-	MET.	-	-	MET.	-	-	
020	OFFICE 3	117.00	VCT	-	-	GB	-	-	CONC.	-	-	GB	-	-	CONC.	-	-	MET.	-	-	MET.	-	-	
021	RECORDS	112.00	VCT	-	-	GB	-	-	CONC.	-	-	GB	-	-	CONC.	-	-	MET.	-	-	MET.	-	-	
022	STORAGE/COPYING	57.00	VCT	-	-	GB	-	-	CONC.	-	-	GB	-	-	CONC.	-	-	MET.	-	-	MET.	-	-	
023	CONFERENCE ROOM	324.00	CARPET	-	-	CONC.	-	-	CONC.	-	-	CONC.	-	-	CONC.	-	-	MET.	-	-	MET.	-	-	
024	PMC	289.00	VCT	-	-	GB	-	-	CONC.	-	-	GB	-	-	CONC.	-	-	MET.	-	-	MET.	-	-	
025	STORAGE 2	45.00	VCT	-	-	GB	-	-	CONC.	-	-	GB	-	-	CONC.	-	-	MET.	-	-	MET.	-	-	
026	MALE RESTROOM	72.00	MCT	-	-	GB	-	-	CONC.	WHITE	GLOSS	CGT&P	WHITE	GLOSS	CONC.	-	-	MET.	-	-	MET.	-	-	TOILET PARTITION FACTORY FIN. BONE WHITE
027	FEMALE RESTROOM	153.00	MCT	-	-	GB	-	-	CONC.	WHITE	GLOSS	CGT&P	WHITE	GLOSS	CONC.	-	-	MET.	-	-	MET.	-	-	
028	MECHANICAL	145.00	SEALER	-	-	PAINT	-	-	CONC.	-	-	CONC.	-	-	CWP	-	-	MET.	-	-	MET.	-	-	
029	ELECTRICAL	88.00	SEALER	-	-	PAINT	-	-	CONC.	-	-	CONC.	-	-	CWP	-	-	MET.	-	-	MET.	-	-	

LEGEND:

- ACT ACOUSTICAL CEILING TILE
- CGT CERAMIC GLAZED TILE
- CONC CONCRETE
- CGT&P CERAMIC GLAZED TILES & PAINT
- CWP CONCRETE WITH PAINT
- GB GYPSUM BOARD W/ PAINT FINISH
- MET METAL
- MCT MOSAIC CERAMIC TILE
- VCT VINYL COMPOSITION TILE

SCHEDULE OF FINISHES 1
SCALE: 1/8"=1'-0" A1-5

PRELIMINARY SUBMITTAL

DRAWING REVISIONS			
REVISION	DATE	BY	DESCRIPTION

DESIGNER F. Z. DIAMZON
DETAILER C. H. JOSE
CHECKER F. Z. DIAMZON
DATE JULY 2010



JOSE D. LEON GUERRERO COMMERCIAL PORT
PORT AUTHORITY OF GUAM
MODERNIZATION AND EXPANSION PROGRAM
 ADMINISTRATION BUILDING WEST ANNEX
 SCHEDULE OF FINISHES

DRAWING NO. A1-5
SHEET NO. 251
TOTAL SHEETS 375