

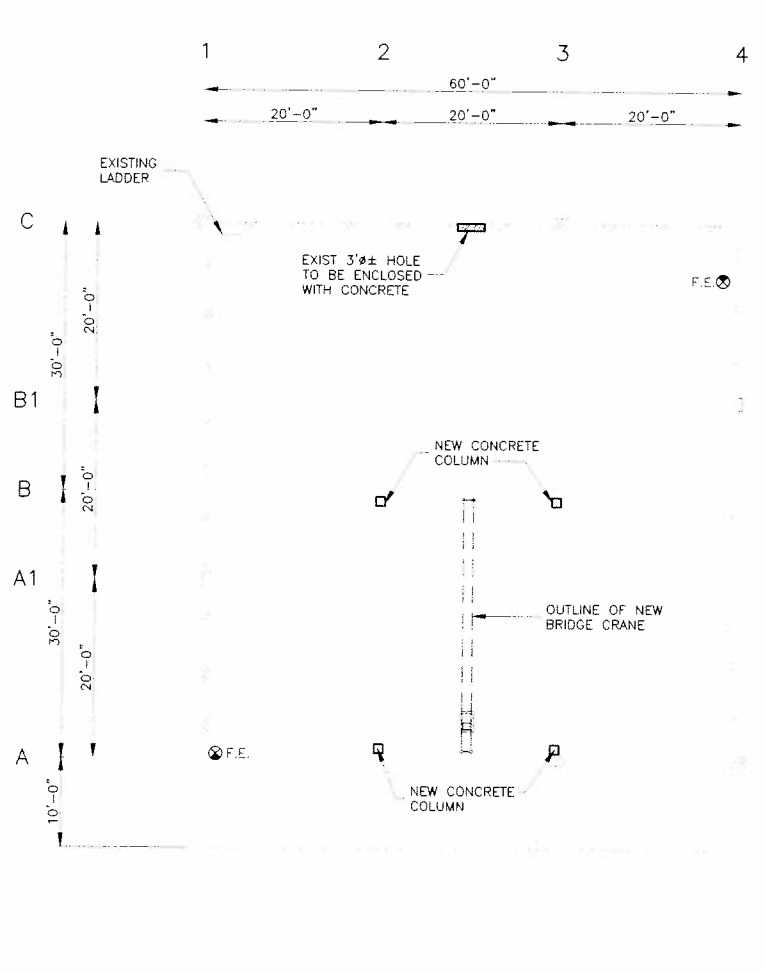
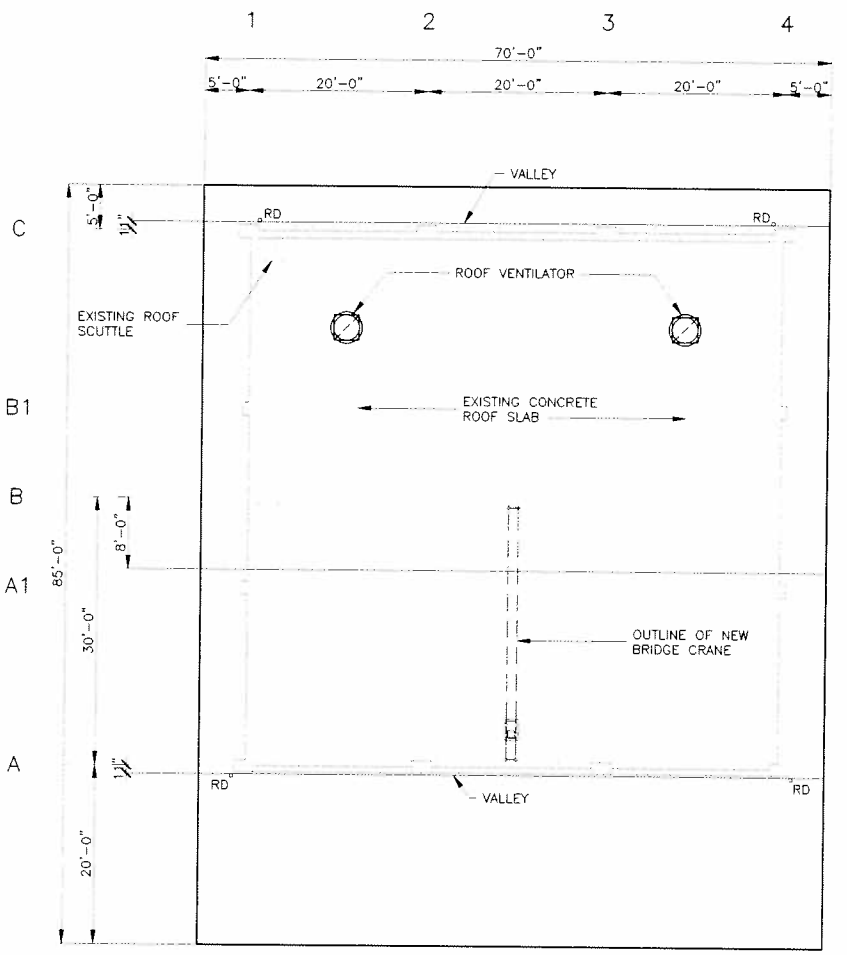


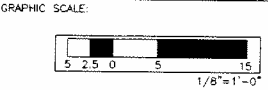
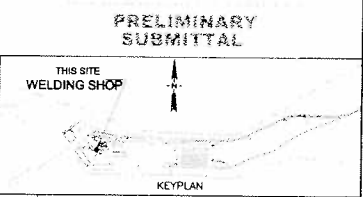
WALL LEGEND:
 REINFORCED CONCRETE WALL
 CMU WALL



GROUND FLOOR PLAN (1)
 SCALE: 1/8"=1'-0" (10-2)



ROOF PLAN (EXISTING) (2)
 SCALE: 1/8"=1'-0" (10-2)



J:\Projects\2010\10-23\Welding Shop\Drawings\A10-23-01.dwg (July 2010) [User: fzd] Plot Date: 7/27/10 11:31 AM

DRAWING REVISIONS				
REVISION	DATE	BY	DESCRIPTION	

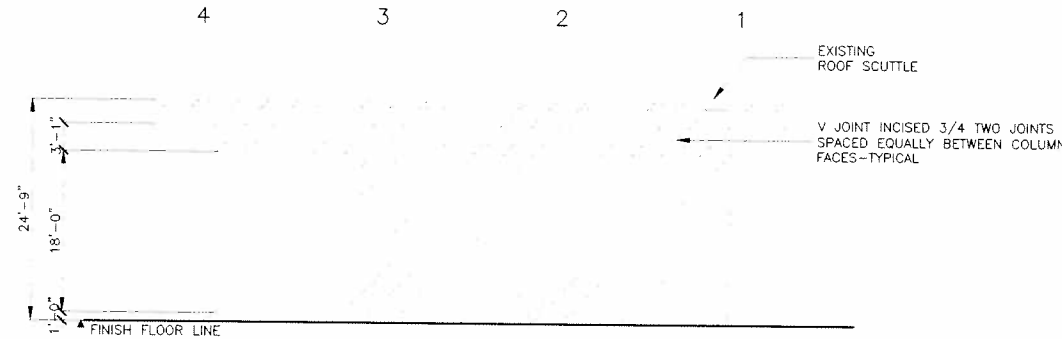
NOTES: 1. ALL DIMENSIONS ARE UNLESS OTHERWISE SPECIFIED. 2. REFER TO ALL APPLICABLE SHEETS IN THIS SET.

DESIGNER
F. Z. DIAMZON
 DETAILER
L. V. RAMOS
 CHECKER
F. Z. DIAMZON
 DATE
JULY 2010

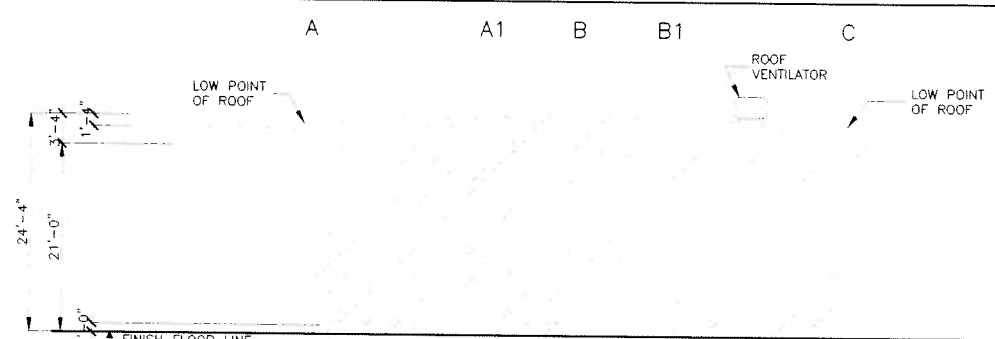


JOSE D. LEON GUERRERO COMMERCIAL PORT
PORT AUTHORITY OF GUAM
 MODERNIZATION AND EXPANSION PROGRAM
 WELDING SHOP
 GROUND FLOOR PLAN
 ROOF PLAN (EXISTING)

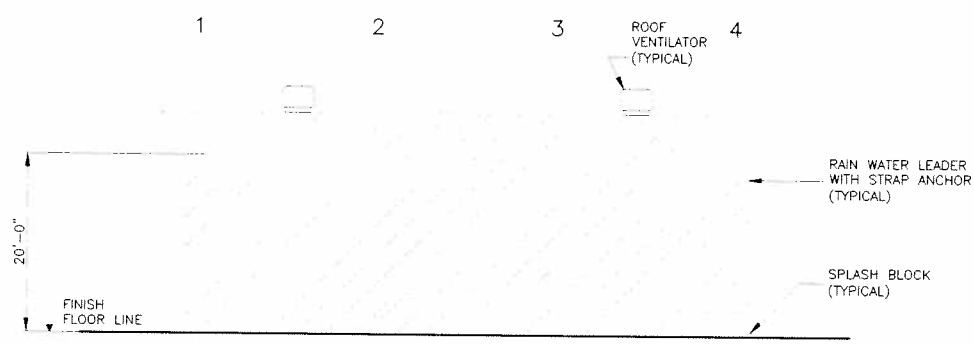
DRAWING NO.
A10-23
 SHEET NO.
269
 TOTAL SHEETS
375



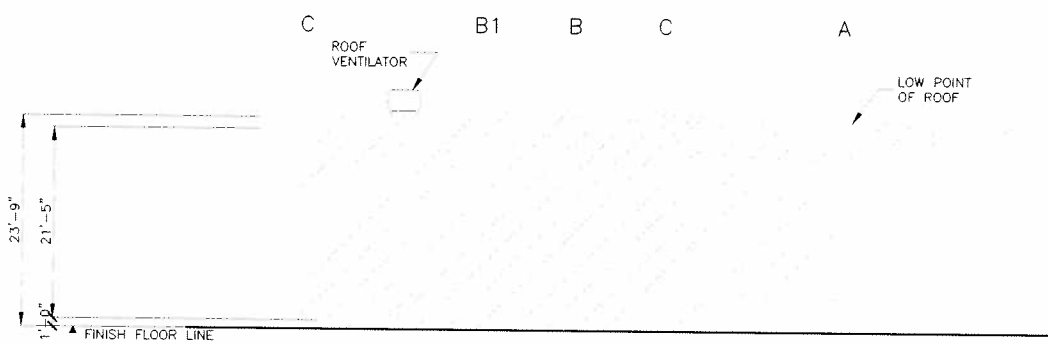
NORTH ELEVATION 1
SCALE: 1/8"=1'-0" A10-24



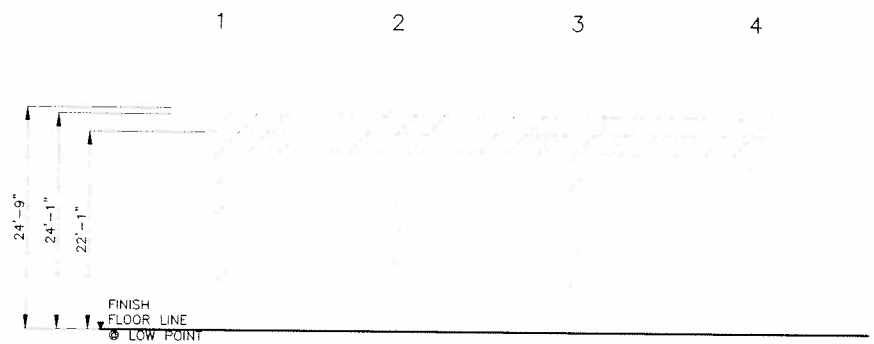
EAST ELEVATION 4
SCALE: 1/8"=1'-0" A10-24



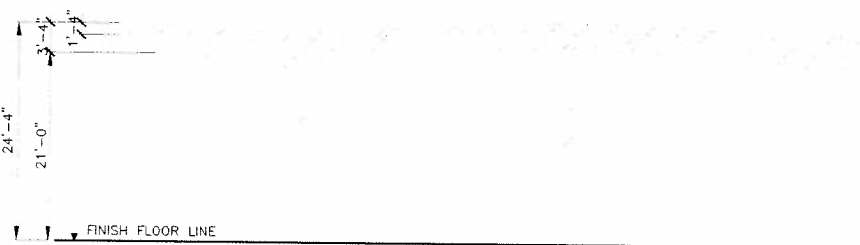
SOUTH ELEVATION 2
SCALE: 1/8"=1'-0" A10-24



WEST ELEVATION 5
SCALE: 1/8"=1'-0" A10-24



LONGITUDINAL SECTION 3
SCALE: 1/8"=1'-0" A10-24



TRANSVERSE SECTION 6
SCALE: 1/8"=1'-0" A10-24

PRELIMINARY SUBMITTAL



1:10:2010 2:00:00 PM C:\Users\jjr\Desktop\Projects\A10-24\A10-24.dwg Job 24 A10-24 09/10/10

DRAWING REVISIONS			
REVISION	DATE	BY	DESCRIPTION

DESIGNER	F. Z. DIAMZON
DETAILER	L. V. RAMOS
CHECKER	F. Z. DIAMZON
DATE	JULY 2010



JOSE D. LEON GUERRERO COMMERCIAL PORT
PORT AUTHORITY OF GUAM
MODERNIZATION AND EXPANSION PROGRAM
WELDING SHOP
NORTH ELEV., SOUTH ELEV., LONGITUDINAL ELEV.,
EAST ELEV., WEST ELEV. & TRANSVERSE SECTION

DRAWING NO.	A10-24
SHEET NO.	270
TOTAL SHEETS	375

Port Modernization Program Project

DESCRIPTION	TYPE OF WORK	QUANTITY	UNIT	RAW COST
<i>Welding Shop</i>	Renovation	5,500	SF	\$ 139,096.00
SUBTOTAL RAW COST				\$ 139,096.00
COST ADJUSTMENT FACTORS				TOTAL COST
SUBTOTAL				\$ 139,096.00
1. Area Cost Factor Adjustment				\$ 3,672.13
SUBTOTAL				\$ 142,768.13
2. Supervision, Inspection & Overhead				\$ 9,279.93
SUBTOTAL				\$ 152,048.06
3. Contingency				\$ 45,614.42
TOTAL 1				\$ 197,662.48
4. Planning and Design				\$ 13,836.37
TOTAL 2				\$ 211,498.86
MARAD (3%)				\$ 6,344.97
TOTAL 3				\$ 217,843.82
Guam Receipt Tax (GRT) (4.167%)				\$ 9,077.55
TOTAL CONSTRUCTION COST (FY 2012)				\$ 226,921.37
TOTAL PROGRAM COST				\$ 226,921.37

COST ADJUSTMENT FACTORS	% AMOUNT
1. Area Cost Factor	2.640
2. Supervision, Inspection and Overhead (SIOH) Factor (%)	6.500
3. Contingency Factor (%)	30.000
4. Planning and Design Factor (%)	7.000