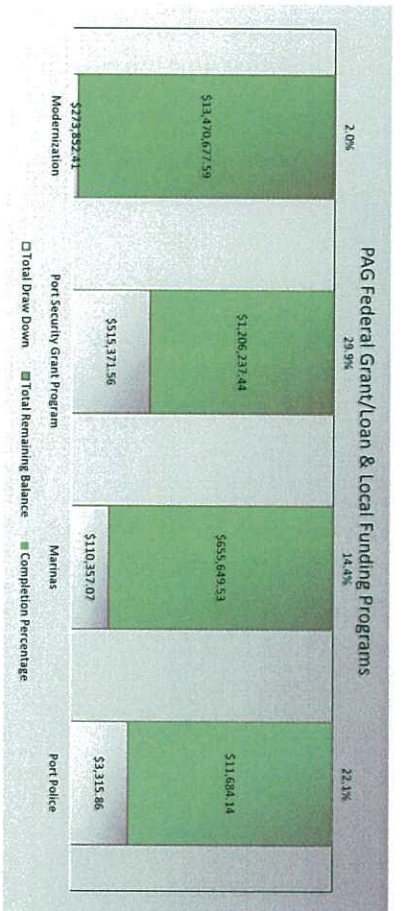


**FY 2019 Port Modernization Plan
Grant Strategy - Monthly Update
As of June 21, 2019**



Grant Program	Total Award Amount	Total Draw Down	Total Remaining Balance	PROCUREMENT IFB/RFI/PO Number	Status
Modernization	\$13,744,530.00	\$273,852.41	\$13,470,677.59		
DTMA9161600007 - Rehabilitation of "H" Wharf	\$10,000,000.00	\$0.00	\$10,000,000.00		Updates to design completed by WSP. Ongoing permit review and updates by local & Federal regulatory agencies to include an Environmental Assessment as recommended by MARAD.

GR882-18-01 - Owner's Agent Engineer Support Services	\$900,000.00	\$273,852.41	\$626,147.59		TO 7 work is ongoing.
Port Enterprise Fund - 1. Guam Commercial Port Improvement Program COMPLETE	\$2,844,530.00	\$0.00	\$2,844,530.00		The PAG has provided MARAD a copy of the bid documents. MARAD currently reviewing Buy American Act provision and potential consideration of WTO Government Procurement Agreement on the top loader bid.
2. Port of Guam Construction Deficiencies and Equipment Purchases					

Project 2 - New Container Yard Re-Striping				IFB No. PAG-CIP-019-002 for \$82,940.00 awarded to Highway Safety Services LLC	
Project 3 - Relocation of Utility Feeder Line from Pump House Building to Load Center 5 Secondary Feeder Line				PO No. 15449-OF for \$10,311 awarded to AB Mer Construction	
Project 4 - Acquisition of Loaded Container Handling Equipment (Top Lifters)				PO No. 15213-OS for \$1,639,976 awarded to Morrigo Equipment LLC, anticipated delivery date January 21, 2020	

Port Security Grant Program	Total Award Amount	Total Draw Down	Total Remaining Balance	PROCUREMENT IFB/RFI/PO Number	Status
EMMW-2016-PU-00523-S01 - Acquisition & Installation of Additional Cameras at Strategic Port Facilities.	\$174,849.00	\$0.00	\$174,849.00		GM letter for No-Cost Extension being prepared to incorporate project with FY2018 PSSGP IIR2. FEMA has been briefed on this proposal during the Port's visit on March 22, 2019.
EMMW-2016-PU-00523-S01 - Upgrade & Refurbishment of Existing Damaged Security Light Poles at Strategic Port Locations	\$475,011.00	\$388,288.06	\$86,722.94		Project completed. Punch list being reviewed by Engineering.
EMMW-2017-PU-00177-S01 - Maintenance and Sustainment Contract for Prime Power Generators	\$179,550.00	\$0.00	\$179,550.00	IFB No. GSA-PAG-004-19	Procurement stay lifted and currently awaiting amendments and new IFB date.
EMMW-2017-PU-00177-S01 - Refurbishment and Hardening of Load Center Buildings Housing Prime Power Generators	\$384,469.00	\$30,895.85	\$353,573.15	IFB No. PAG-CIP-019-003	Engineering submitted a requisition to commence procurement process.

Grant Program	Total Award Amount	Total Draw Down	Total Remaining Balance	PROCUREMENT #/B/RFP/PO Number	Status
EMW-2017-PU-00177-S01 - US Coast Guard Multi Agency National Association of State Boating Law Administrators (NASBLA) Training for Port Police	\$56,250.00	\$53,150.00	\$3,100.00		Project completed on August 2018.
EMW-2018-PU-00441-S01 - IDEN Technology Redundant Interoperable Communications System Monthly Service	\$94,944.00	\$19,156.28	\$75,787.72		The PAG has submitted its FEMA-required EHR Review to the Grants Program Directorate and Program Analyst. Awaiting on FEMA release of funds.
EMW-2018-PU-00441-S01 - Maintenance and Sustainment Contract for FEMA-acquired AS&E ZBV Backscatter X-Ray Van	\$195,669.00	\$0.00	\$195,669.00		Status Quo. Guam Customs currently working with GSA on inputting the requisition.
EMW-2018-PU-00441-S01 - Replacement CCTV system Existing Analog Cameras with Digital IP Cameras	\$160,867.00	\$23,881.37	\$136,985.63		Status Quo. SOW is being updated to incorporate FY2016 grant. Upon completion of this project, all Port cameras will be in digital Ip format.
Marinas	\$766,006.60	\$110,357.07	\$655,649.53		
F14AP00191 - Renovation of the Guam Harbor of Refuge Phase 2 - A/E Design, Repairs to Mooring, Acquisition of Pump out System & Shelter/Housing	\$56,484.60	\$14,765.40	\$41,719.20		Grant Amount Adjusted to \$56,484.60 as indicated on MOU; Revised MOU was reviewed by PAG legal counsel. DOAG will process MOU and obtain all the necessary signatures.
F16AP00261 - Harbor of Refuge Moorage Repairs - Phase 3	\$200,000.00	\$11,995.00	\$188,105.00		Grant Amount Adjusted to \$188,105.00 as indicated on MOU; Revised MOU was reviewed by PAG legal counsel. DOAG will process MOU and obtain all the necessary signatures.
F17AP00486 - Harbor of Refuge Moorage Repairs - Phase 4	\$200,000.00	\$13,194.00	\$186,806.00		Grant Amount Adjusted to \$186,806.00 as indicated on MOU; Revised MOU was reviewed by PAG legal counsel. DOAG will process MOU and obtain all the necessary signatures.
F19AP00334 - Harbor of Refuge Moorage Repairs - Phase 5	\$200,000.00	\$10,048.00	\$189,952.00		Grant Amount adjusted to \$189,952.00 for salary, supplies, and indirect costs for Department of Agriculture. Pending approval of MOU.
F16AF00566 - Agat Marina Demolition of Dock B	\$109,522.00	\$60,454.67	\$49,067.33		Project Completed January 24, 2019. All reimbursements received. Pending Close Out.
Port Police	\$15,000.00	\$3,315.86	\$11,684.14		
Project Number: PT19-03-03PPD - Port Police - Section 402 Highway Safety Funds - Operation Adai He Hao (Watch Out!)	\$15,000.00	\$3,315.86	\$11,684.14		Draw down submitted June 14, 2019.
Grand Total	\$16,247,145.60	\$902,896.90	\$15,344,248.70		



PORT OF GUAM
ATURIDATI PUETTON GUAHAN
Jose D. Leon Guerrero Commercial Port
1026 Cabras Highway, Suite 201, Piti, Guam 96925
Telephone: 671-477-5931/35 Facsimile: 671-477-2689/4445
Website: www.portguam.com



Lourdes A. Leon Guerrero
Governor of Guam
Joshua F. Tenorio
Lieutenant Governor

FINANCE-YTD - April 2019

Financial Highlights

Income Statement

Balance Sheet

Accounts Receivable Aging Summary Report

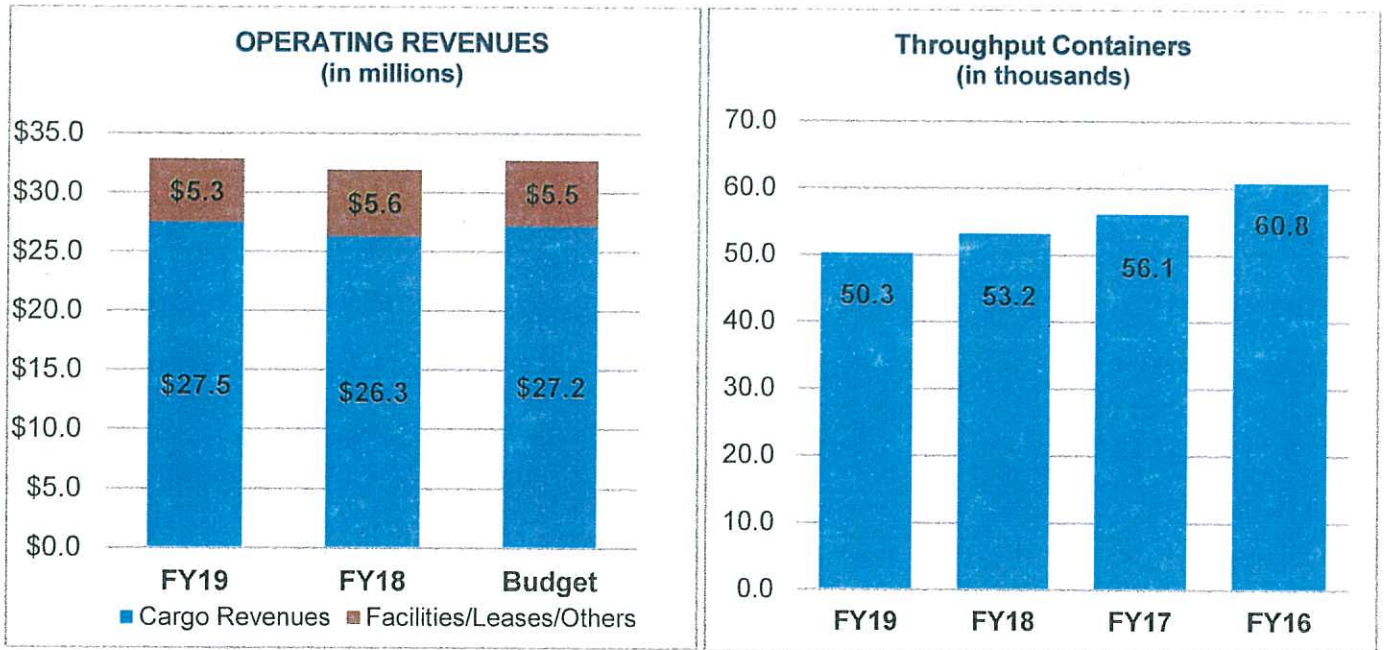
Accounts Payable Summary

Budget Lift/Transfer Monthly Activities

Crane Surcharge Income Statement

Financial Highlights – YTD April FY2019

Operating Performance:



REVENUES AND CARGO THROUGHPUT:

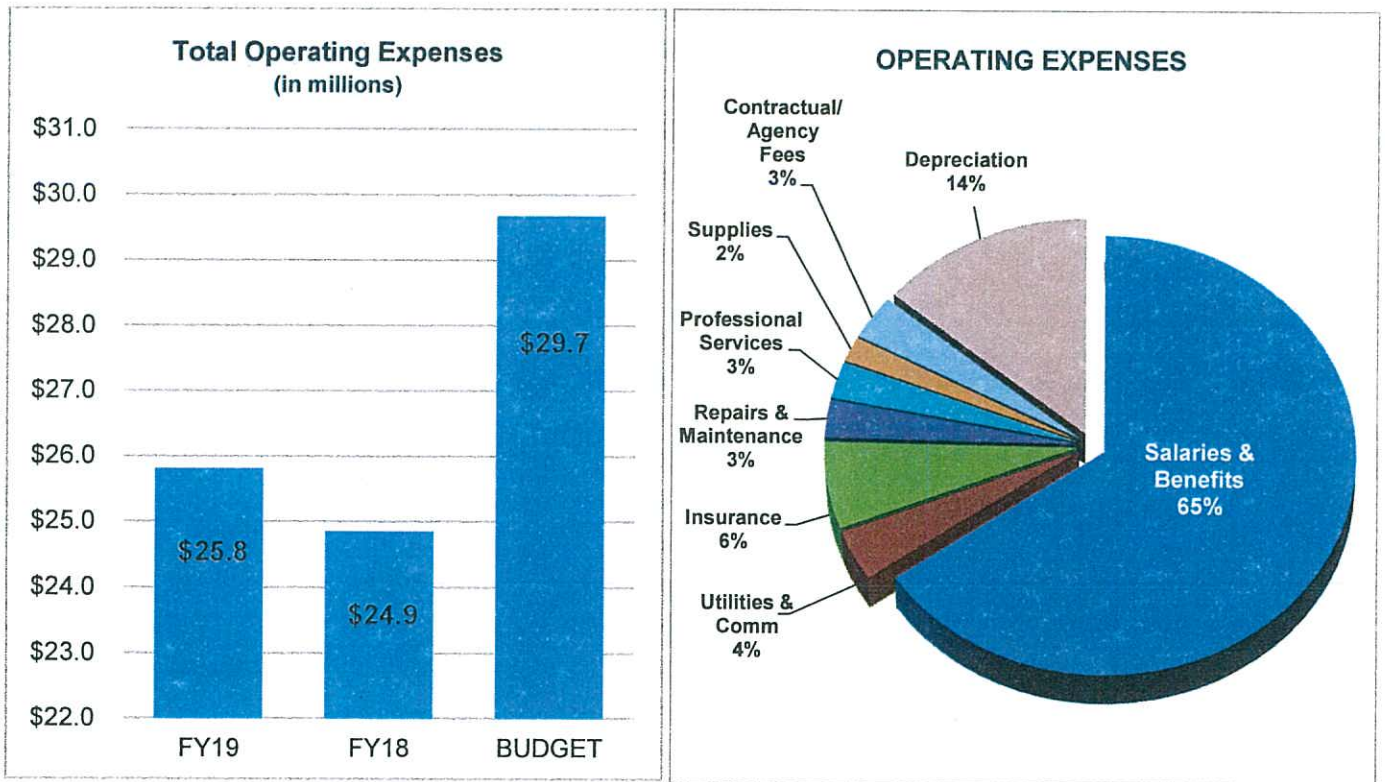
Total Operating Revenues as of April 2019 was \$32.8 million, which consist of \$27.5 million in cargo revenues and \$5.3 million in Facilities, Leases, and Other Services.

FY19 YTD cargo revenues is 5% higher than last year’s total (\$26.3 mil) and 1% higher than Budget (\$27.2 mil).

FY19 YTD Facilities, Leases, and Other Services is 6% lower than last year’s total (\$5.6 mil) and 4% lower than budget (\$5.5 mil).

Overall Operating Revenues as of April is 0.5% higher than Budget (\$32.7 mil) and 3% higher than last year’s year to date April (\$31.9 mil).

Total number of containers handled as of April 2019 was 50,250 which is 5% lower compared to last year April 2018. **Compared to April of FY16 the number of containers handled decreased by 17.3%.**



OPERATING EXPENSES:

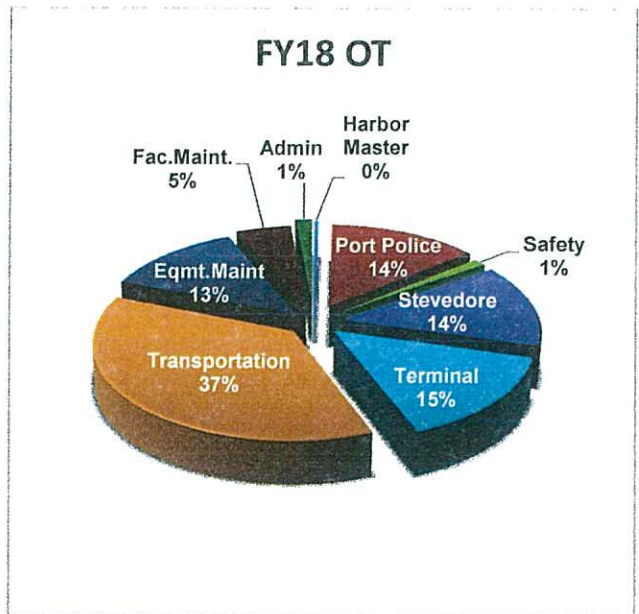
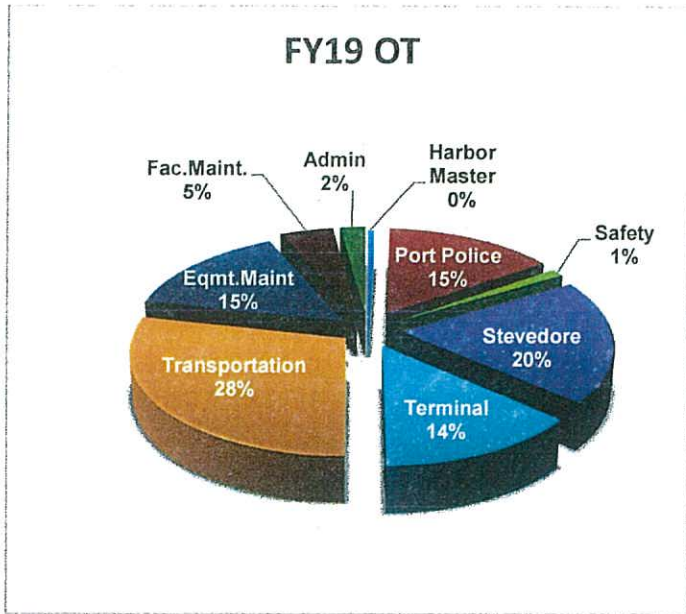
Total Operating Expenses as of April 2019 was \$25.8 million, which is 13% lower than Budget (\$29.7 mil) and 4% higher than last year's total operating expenses (\$24.9 mil). For the 7 months of FY19, expenses over a million are: Salaries - \$12, Benefits & Other Personnel Costs - \$4.9, General Insurance - \$1.6 and Depreciation \$3.6.

OVERTIME EXPENSE AND DIRECT LABOR REVENUE:

Total Overtime as of April was \$1.1 million which is 6% higher than last year April (\$1.07 mil). Direct Labor Revenue as of April was \$2.1 mil, which is 7% lower than last year and 4% lower than budget. Direct Labor charges are for services performed by Port employees under special service request and differentials under the throughput service.

Below is the breakdown of overtime for each division/section for FY19 and FY18 as of April:

Section	FY19	FY18	Budget	DL Revenue
Harbor Master	5,483	3,604	4,081	0
Port Police	170,295	148,710	175,000	85,982
Safety	12,591	11,214	5,831	
Stevedore-Cargo Handling	220,748	149,068	140,000	388,764
-Rigger	6,020	2,610	5,831	822,825
Terminal	155,122	158,476	168,000	363,777
Transportation-Superintendent	50,002	51,297	47,250	
-Crane Operator	77,082	94,008	87,878	58,490
-Equip Operator	185,127	235,798	233,919	325,336
-Dispatcher	13,966	15,648	17,500	0
Maint.-Crane Maint.	77,279	66,310	67,081	0
-Preventive Maint.	46,242	32,762	43,750	443
-Fleet Maint.	5,599	0	5,831	0
-Welders	39,667	36,782	29,169	120
Facility Maint.-Building	12,531	7,733	8,750	210
-Janitorial	3,102	2,597	2,919	0
-Elect./Refr.	37,313	43,158	35,000	2,705
Administration	962	0	0	
Finance	1,756	13,401	11,669	3,549
Human Resources	2,855	770	1,750	0
Engineering	4,412	0	17,500	0
Procurement	0	72	1,750	0
Information Technology	15,320	1,915	20,419	0
TOTAL	1,143,472	1,075,933	1,130,878	2,052,201



Year to date Operating Revenues minus the Year to date Operating Expenses resulted to an Operating Income of \$7.0 mil as of April 30, 2019.

Non-Operating Revenues and Expenses consist of the following: \$1.7 million -Retirement contribution for COLA, Supplemental and Medical/Dental/Life Insurance expenses for retirees, \$1.0 million in Interest Income, \$1.8 million in Interest Expense, \$128K Federal Expense, \$286K in Federal Reimbursements and \$38K in Loss on Asset Disposal. The net total of non-operating expenses and revenues as of April is a negative \$2.3 mil.

The Total Net Income as of April 30, 2019 is \$4.7 million.

Accounts Receivable Trade (net) as of April 30, 2019 was \$6.3 million.

Aging Status is as follows: 90.7% - Current, 5.2% - over 30 days, 0.3% - over 60 days, 0.4% - over 90 days and 3.3% - over 120 days.

Accounts Payable Trade as of April 30, 2019 is \$1.1 million which is 36% lower than last year's ending balance of \$1.8 million.

Port Authority of Guam
Income Statement
With Budget Comparison (Unaudited)
7 Months Ending 04/30/19

Current Month	Actual	%	Last Year	Actual	%	Budget	Chng	%	Year to Date	Actual	%	Last Year to Date	Actual	%	Chng	%	Budget	Chng	
																			Actual
OPERATING REVENUES																			
CARGO THROUGHPUT REVENUES																			
1,805,774	40.7%	1,535,730	33.0%	1,610,211	12%	1,687,825	35.6%	10,686,362	33.5%	9,4%	11,271,477	4%							
208,726	4.7%	183,152	3.9%	198,376	5%	1,403,506	4.3%	1,315,524	4.1%	6.7%	1,388,632	1%							
48,947	1.1%	84,208	1.8%	105,427	-54%	1,167,026	3.6%	704,580	2.2%	65.6%	737,989	58%							
549	0.0%	3,557	0.1%	1,808	-70%	11,511	0.0%	11,709	0.0%	-1.7%	12,656	-9%							
CT-CHASSIS																			
18,954	0.4%	73,430	1.6%	46,478	-59%	324,533	1.0%	323,934	1.0%	0.2%	325,346	0%							
14,121	0.3%	4,173	0.1%	8,022	76%	62,382	0.2%	57,141	0.2%	9.2%	56,154	11%							
5,596	0.1%	1,120	0.0%	2,897	93%	57,225	0.2%	20,307	0.1%	181.8%	20,279	182%							
536	0.0%	68	0.0%	148	262%	5,980	0.0%	943	0.0%	534.1%	1,036	477%							
11,111	0.3%	12,036	0.3%	12,049	-8%	88,628	0.3%	78,986	0.2%	12.2%	84,343	5%							
CT-TUNA																			
CT-RO/RO																			
CT-STUFFING/DEVAN																			
CT-HEAVYLIFT																			
CT-LONGLENGTH																			
OUT-OF-GAUGE CARGO (OOG)																			
2,114,314	47.6%	1,897,475	40.8%	1,985,416	6%	14,808,620	45.1%	13,199,486	41.3%	12.2%	13,897,912	7%							
CARGO THROUGHPUT REVENUES																			
OTHER CARGO RELATED REVENUES																			
1,632,472	36.8%	1,856,360	39.9%	1,896,367	-14%	12,725,830	38.8%	13,124,835	41.1%	-3.0%	13,274,569	-4%							
3,746,786	84.4%	3,753,835	80.6%	3,881,783	-3%	27,534,451	83.9%	26,324,321	82.5%	4.6%	27,172,481	1%							
OPERATING REVENUES																			
OTHER CARGO RELATED REVENUES																			
OPERATING REVENUES																			

Port Authority of Guam
Income Statement
With Budget Comparison (Unaudited)
7 Months Ending 04/30/19

Current Month Actual	%	Last Year Actual	%	Budget	Chng	Year to Date Actual	%	Last Year to Date Actual	%	Chng	Budget	%
NON OPERATING REVENUES												
FACILITIES												
88,710	2.0%	92,062	2.0%	111,564	-20%	644,600	2.0%	745,599	2.3%	-13.5%	780,948	-17%
149,339	3.4%	371,710	8.0%	227,245	-34%	1,290,349	3.9%	1,570,592	4.9%	-17.8%	1,590,715	-19%
	0.0%		0.0%	9,527	-100%	59,040	0.2%	27,300	0.1%	0.0%	66,689	-11%
107,626	2.4%	104,736	2.2%	101,321	6%	728,173	2.2%	710,832	2.2%	2.4%	709,247	3%
87,938	2.0%	87,938	1.9%	88,864	-1%	615,565	1.9%	623,899	2.0%	-1.3%	622,048	-1%
3,610	0.1%	4,621	0.1%	4,646	-22%	26,280	0.1%	32,571	0.1%	-19.3%	32,522	-19%
4,116	0.1%	3,979	0.1%	4,012	3%	27,599	0.1%	28,694	0.1%	-3.8%	28,084	-2%
350	0.0%	430	0.0%	563	-38%	2,375	0.0%	3,875	0.0%	0.0%	3,941	-40%
23,954	0.5%	20,930	0.4%	20,289	18%	160,923	0.5%	146,072	0.5%	10.2%	142,023	13%
3,184	0.1%	2,964	0.1%	2,910	9%	25,155	0.1%	19,990	0.1%	25.8%	20,370	23%
210,295	4.7%	194,821	4.2%	193,897	8%	1,554,228	4.7%	1,508,739	4.7%	3.0%	1,357,279	15%
FACILITIES												
679,122	15.3%	884,191	19.0%	764,838	-11%	5,134,287	15.6%	5,418,162	17.0%	-5.2%	5,353,866	-4%
OTHER FEES & SERVICES												
	0.0%		0.0%		0%		0.0%		0.0%	0.0%		0.0%
	0.0%		0.0%		0%		0.0%		0.0%	0.0%		0.0%
	0.0%		0.0%	115	0%	30,130	0.0%	388	0.0%	0.0%	805	-100%
1,087	0.0%	1,989	0.0%	1,808	0%	13,132	0.0%	16,274	0.1%	0.0%	12,656	138%
2,161	0.0%	1,989	0.0%	2,329	-100%	92,155	0.3%	19,255	0.1%	-32%	16,303	-19%
9,072	0.2%	11,452	0.2%	15,367	-93%	18,540	0.1%	86,361	0.3%	6.7%	107,569	-14%
2,502	0.1%	3,207	0.1%		0%			21,776	0.1%	-14.9%		
OTHER FEES & SERVICES												
14,822	0.1%	16,649	0.4%	19,619	-87%	153,958	0.5%	144,054	0.5%	6.9%	137,333	12%
ADMINISTRATIVE FEES & SERVICES												
198	0.3%	400	0.0%	197	7424%	848	0.0%	1,408	0.0%	-39.8%	1,379	-39%
REIMBURSEMENTS												
	0.0%		0.0%		0%		0.0%		0.0%	0.0%		0.0%
	0.0%		0.0%		0%		0.0%		0.1%	0.0%		0.0%
	0.0%		0.0%		0%		0.0%	34,265	0.0%	0.0%		0.0%
	0.0%		0.0%		0%		0.0%		0.0%	0.0%		0.0%
	0.0%		0.0%		0%		0.0%		0.0%	0.0%		0.0%
	0.0%		0.0%		0%		0.0%		0.0%	0.0%		0.0%
	0.0%		0.0%		0%		0.0%		0.1%	0		
694,141	15.6%	901,239	19.4%	784,654	-12%	5,289,093	16.1%	5,597,888	17.5%	-5.5%	5,492,578	-4%
4,440,927	100.0%	4,655,074	100.0%	4,666,437	-5%	32,823,543	100.0%	31,922,209	100.0%	2.8%	32,665,059	0%

Port Authority of Guam
Income Statement
With Budget Comparison (Unaudited)
7 Months Ending 04/30/19

Current Month	Actual	%	Last Year	Actual	%	Budget	Chng	%	Year to Date	Actual	%	Last Year to Date	Actual	%	Chng	%	Budget	Chng	
																			Actual
INDIRECT COSTS																			
General & Administrative Expenses																			
1,651,970	37.2%	1,515,204	32.5%	1,933,197	-15%	11,982,632	36.5%	10,983,424	34.4%	9.1%	13,532,379	-11%							
125,793	2.8%	116,086	2.5%	128,181	-2%	871,320	2.7%	807,327	2.5%	7.9%	897,267	-3%							
447,204	10.1%	412,765	8.9%	498,259	-10%	3,078,134	9.4%	2,982,860	9.3%	3.2%	3,487,813	-12%							
139,238	3.1%	122,024	2.6%	4,167	3241%	919,949	2.8%	865,015	2.7%	6.4%	29,169	3054%							
214	0.0%	614	0.0%	6,667	-97%	7,263	0.0%	34,592	0.1%	-79.0%	46,669	-84%							
9,758	0.2%	12,427	0.3%	23,200	-58%	83,608	0.3%	81,148	0.3%	3.0%	162,400	-49%							
-	0.0%	-	0.0%	-	-	-	0.0%	-	0.0%	-	-	-							
111,099	2.5%	132,453	2.8%	155,500	-29%	862,368	2.6%	1,013,379	3.2%	-14.9%	1,088,500	-21%							
201,557	4.5%	201,557	4.3%	225,834	-11%	1,648,316	5.0%	1,475,775	4.6%	11.7%	1,580,838	4%							
-	0.0%	-	0.0%	-	#DIV/0!	29,000	0.1%	-	0.0%	-	-	-							
80,560	1.8%	19,738	0.4%	81,423	-	340,747	1.0%	204,127	0.6%	66.9%	569,961	-40%							
-	0.0%	-	0.0%	-	-	-	0.0%	(44,756)	-0.1%	-100.0%	-	-							
-0,074	0.1%	9,928	0.2%	36,584	-89%	75,379	0.2%	129,528	0.4%	-41.8%	256,088	-71%							
9,363	0.1%	14,201	0.3%	36,584	-74%	135,519	0.4%	148,999	0.5%	-9.0%	256,088	-47%							
5,148	0.2%	11,249	0.2%	36,584	-86%	138,966	0.4%	100,730	0.3%	38.0%	256,088	-46%							
517,785	0.1%	520,664	0.0%	483,334	7%	3,621,165	11.0%	3,635,326	11.4%	-0.4%	3,383,338	7%							
-	11.7%	-	0.0%	6,417	-100%	1,029	0.0%	500	0.0%	105.8%	44,919	-98%							
87,073	0.0%	57,934	1.2%	129,699	-48%	475,363	1.4%	567,320	1.8%	-16.2%	907,893	-48%							
5,005	1.5%	6,210	0.1%	43,405	-88%	42,096	0.1%	170,141	0.5%	-75.3%	303,835	-86%							
-	0.1%	-	0.0%	-	-	-	0.0%	-	0.0%	-	-	-							
43,885	0.0%	156,950	3.4%	90,322	-51%	404,386	1.2%	560,289	1.8%	-27.8%	632,254	-36%							
131,716	1.0%	134,714	2.9%	236,975	-44%	700,544	2.1%	1,009,540	3.2%	-30.6%	1,658,825	-58%							
-	3.0%	-	0.0%	7,000	-100%	-	0.0%	19,170	0.1%	70.4%	49,000	-100%							
13,920	0.0%	14,603	0.3%	59,888	-77%	95,014	0.3%	55,749	0.2%	70.4%	419,216	-77%							
-	-	-	-	-	-	-	-	-	-	-	-	-							
18,050	0.3%	779	0.0%	15,625	16%	84,320	0.3%	59,512	0.2%	#DIV/0!	109,375	-23%							
-	0.4%	-	0.0%	-	-	-	0.0%	-	0.0%	-	-	-							
-	0.0%	-	0.0%	-	-	221,277	0.7%	-	0.0%	-	-	-							
-	0.0%	-	0.0%	-	-	-	0.0%	-	0.0%	-	-	0%							
3,583,410	0.0%	3,460,100	74.3%	4,238,845	-100%	25,818,396	78.7%	24,859,694	77.9%	3.9%	29,671,915	-13%							

Port Authority of Guam
Income Statement
With Budget Comparison (Unaudited)
7 Months Ending 04/30/19

	Current Month		Last Year		Budget	Chng		Year to Date		Last Year to Date		Chng	Budget	Chng
	Actual	%	Actual	%				Actual	%	Actual	%			
OPERATING INCOME (LOSS)	857,517	80.7%	1,194,974	25.7%	427,592	738%	OPERATING INCOME (LOSS)	7,005,147	21.3%	7,062,515	22.1%	2,993,144	134%	
OTHER INCOME (EXPENSE)							OTHER INCOME (EXPENSE)							
Other Income & Expense		0.0%		0.0%		0%	Other Income & Expense		0.0%		0.0%		-	
Other Income		0.0%		0.0%		0%	Other Income		0.0%		0.0%		-	
Interest Income		0.0%		0.0%		0%	Interest Income		0.0%		0.0%		-	
Interest Expense		0.0%		0.0%		0%	Interest Expense		0.0%		0.0%		-	
Interest Income	205,301	4.6%	5,528	0.1%	5,500	3633%	Interest Income	1,045,430	3.2%	(71,693)	-0.2%	38,500	2615%	
Other Expense		0.0%	(85,954)	-1.8%	(36,663)	-100%	Other Expense	(1,780,765)	-5.4%	(613,022)	-1.9%	(256,641)	594%	
Interest Expense	241	0.0%	(1,917)	0.0%	(1,917)	-113%	Interest Expense	29,011	0.1%	30	0.0%	(13,419)	-316%	
Claims Settlement		0.0%		0.0%		0%	Claims Settlement		0.0%		0.0%		0%	
Retirement Govt Contribution	(241,769)	-5.4%	(253,340)	-5.4%	(259,429)	-7%	Retirement Govt Contribution	(1,692,788)	-5.2%	(1,773,224)	-5.6%	(1,816,003)	-7%	
Federal Reimbursement	111,749	2.5%	33,038	0.7%	222,180	0%	Federal Reimbursement	286,092	0.9%	330,281	1.0%	1,555,260	0%	
Federal Expenses	(15,719)	-0.4%	(44,119)	-0.9%	(52,106)	-70%	Federal Expenses	(128,366)	-0.4%	(137,421)	-0.4%	(364,742)	-65%	
Gain <Loss> on Asset Disposals		0.0%		0.0%	(4,167)	-100%	Gain <Loss> on Asset Disposals	(38,401)	-0.1%	(13,187)	0.0%	(29,169)	32%	
Other Income & Expense	(59,802)	1.3%	(344,847)	-7.4%	(126,602)	-147%	Other Income & Expense	(2,279,788)	-6.9%	(2,278,237)	-7.1%	(886,214)	157%	
OTHER INCOME (EXPENSE)	(59,802)	1.3%	(344,847)	-7.4%	(126,602)	-147%	OTHER INCOME (EXPENSE)	(2,279,788)	-6.9%	(2,278,237)	-7.1%	(886,214)	157%	
NET INCOME (LOSS)	\$17,320	20.7%	850,127	18.3%	300,990	205%	NET INCOME (LOSS)	4,725,359	14.4%	4,784,278	15.0%	2,106,930	124%	

Total Assets	Amount Current	Last Month End	Amount Last Year End	Change This Month	Change This Year
Current Assets					
Cash on Hand	2,000.00	2,000.00	2,000.00		
Cash Fund	100.00	100.00	100.00		
Cashier Change Fund	2,100.00	2,100.00	2,100.00		
Cash on Hand					
Incentive Award Fund					
First Hawaiian Bank-Incentive					
Incentive Award Fund					
Cash in Bank					
First Hawaiian Bank	64,566,192.61	63,916,597.97	61,151,016.86	649,594.64	3,415,175.75
Bank of Guam	2,107,449.02	1,264,098.01	2,738,546.41	843,351.01	631,097.39
Bank of Hawaii	66,673,641.63	65,180,695.98	63,889,563.27	1,492,945.65	2,784,078.36
Citizen Security Bank					
Cash in Bank					
Cash in Bank-Trust	12,864,208.24	12,751,235.00	8,748,966.83	113,073.24	4,115,341.41
Trust-Current Unrestricted	5,922,743.22	5,125,286.88	5,408,157.22	207,458.34	75,412.00
BOG-Current Restricted	18,197,053.46	17,876,521.88	14,157,124.05	320,531.58	4,039,929.41
Cash in Bank-Trust					
Short Term Investments					
Bank of Guam	4,625,102.87	3,320,269.42	9,468,779.00	1,304,833.45	4,843,676.13
Citizen's Security Bank					
First Hawaiian Bank					
Bank of Hawaii					
Bank of Hawaii					
Oceanic Bank					
Gov Guam Employees Fed CU					
Short Term Investments					
Account Receivable-Trade (Net)	4,625,102.87	3,320,269.42	9,468,779.00	1,304,833.45	4,843,676.13
Accounts Receivable-Trade Allow for Uncollectible Acct. A/R-Clearing Account	6,322,946.82	7,771,583.39	5,089,858.97	1,448,646.57	1,233,087.85
Account Receivable-Trade (Net)	6,026,736.84	7,475,124.56	4,793,390.14	1,448,387.72	1,233,346.70
Accounts Receivable-Other					
Accounts Receivable-EMD	49.14	1,518.84	1,843.84	1,469.70	1,794.70
Accounts Receivable-EMD/Other					
Accounts Receivable-Cash/Retmb					
Accounts Receivable-Other	529,026.61	529,026.61	655,129.39		126,102.78
Accounts Receivable-Ins Procee					

	Amount Current	Last Month End	Amount Last Year End	Change This Month	Change This Year
Accounts Receivable-Other	529,075.75	530,545.45	656,973.23	1,469.70-	127,897.48-
Marina Receivables	5,783.62	5,931.12	9,218.12	852.50	2,434.50-
Accounts Receivable-Agat Marina	2,228.44	2,228.39	2,769.67	227.85-	1,482.23-
Accounts Receivable-GDP Marina	600.00	300.00	2,046.50	300.00	1,446.50-
Accounts Receivable-Harbor of Marina Receivables	9,384.06	8,459.51	14,034.29	924.55	4,650.23-
Interest Receivables					
Bank of Guam					
Bank of Hawaii					
Bank of Japan					
Citibank					
Citizens Security Bank					
First Hawaiian Bank					
GovGuam Emp Fed Credit Union					
Oceanic Bank					
Other					
Interest Receivables					
Prepaid Expenses	965,158.94	1,166,715.73	58,055.50	201,556.79-	965,158.94
Prepaid Insurance	568,317.17	1,674,754.12	58,055.50	106,436.99-	510,261.67
Prepaid Expenses	1,533,476.11	1,841,469.89	58,055.50	307,993.78-	1,475,420.61
Deferred Expenses					
Deferred Geda Addendum L/Lease					
Credit Note Reimbursement					
Deferred Expenses					
Current Assets	97,596,570.72	96,235,186.69	93,040,019.48	1,361,384.03	4,556,551.24
Non Current Assets					
Long Term Receivable	2,258,190.48	2,258,190.48	2,258,190.48		
Long Term Receivable-DOA	1,490,449.90	1,490,449.90	1,490,449.90		
Long Term Receivable-Geda	3,748,640.38	3,748,640.38	3,748,640.38		
Allow for Uncollectible LT A/R					
Long Term Receivable					
Revenue Bond Reserves	3,948,637.19	3,887,472.65	3,518,079.07	61,164.53	430,558.11
Revenue w/Trustee-Unrestricted	12,890,711.67	15,890,711.67	15,890,711.67		
Revenue Bond Reserves	19,839,348.85	19,778,184.32	19,408,790.74	61,164.53	430,558.11
Inventory-A/C	8,690.00	8,690.00	8,690.00		
Inventory-Computer	65,415.64	65,415.64	101,434.12		36,018.48-
Gas, Oil and Diesel Inventory	99,777.72	99,787.53	99,952.81	9.81-	717.81
Inventory-Parts	506,715.92	489,850.92	512,276.76	16,865.00	5,560.84-
Supplies Inventory					

	Amount Current	Last Month End	Amount Last Year End	Change This Month	Change This Year
Contra-Asset Inventory Adj. Allowance for Obsolescence Inventory for Survey	1,721.09- 87,549.04-	1,721.09- 87,549.04-	1,721.09- 87,549.04-		
Inventory	592,281.81	575,426.62	633,143.32	16,855.19	40,861.51-
Work In Progress					
Const Work in Progr-Local	3,247,269.62	203,029.51	67,360.29	32,210.01	174,909.33
Const Work in Progr-Federal	1,952,480.67	1,709,446.27	2,663,160.64	76,977.81	483,469.44
Const Work in Progr-BOND			1,172,084.05	283,034.67	1,820,396.62
Work In Progress	5,381,980.37	4,982,757.88	2,903,204.98	399,222.49	2,478,775.39
Non Current Assets	25,813,611.03	25,336,368.82	22,945,139.04	477,242.21	2,868,471.99
Property, Plant & Equipment					
Land	3,563,000.00	3,563,000.00	3,563,000.00		
Buildings	15,732,648.10	15,732,648.10	15,732,648.10		
Buildings-Original	125,548,911.67	125,548,911.67	125,548,911.67		
Buildings-Substation Shelters					
Buildings-Wharf Improvements					
Canopy Structures	141,281,559.77	141,281,559.77	141,281,559.77		
Accumulated Depreciation-Build	15,242,416.44-	15,240,431.59-	15,228,522.49-	1,984.85-	13,893.95-
AccDeprec-Buildings-Original					
AccDeprec-Buildings-Sub Shelter					
AccDeprec-Buildings-Wharf Impr	35,338,690.42-	35,050,713.43-	33,320,334.63-	287,976.99-	2,018,355.79-
AccDeprec Canopy Structures					
Accumulated Depreciation-Build	50,581,106.86-	50,291,145.02-	48,548,857.12-	289,961.84-	2,032,249.74-
Furnishings & Equipment					
Air TOOLS					
Communications Equip	531,281.08	531,281.08	528,231.08		3,050.00
Computer Equip	6,097,298.34	6,097,298.34	6,075,435.32		21,863.02
Crane Equip	15,926,684.91	15,926,684.91	15,964,110.56		37,425.65-
Furnishings & Office Equip	1,183,716.16	1,171,627.16	1,149,873.30	12,089.00	33,842.86
Forklift Equip	1,821,145.00	1,821,145.00	1,821,145.00		
Generator Relocation Cost					
Generator Sets	1,229,056.25	1,229,056.25	1,229,056.25		
Hand & Unload Equip	14,832.85	14,832.85	14,832.85		
Mowing Equip	2,832.00	2,832.00	2,832.00		
Other Equip	1,724,446.84	1,724,446.84	1,836,392.83		106,986.99-
Power Tools	39,427.95	39,427.95	26,445.36		
Safety Equip	336,408.08	336,408.08	328,110.82		
Shop Equip	2,970,216.97	2,970,216.97	2,970,216.97		12,695.79-
Tractors					

	Amount Current	Last Month End	Amount Last Year End	Change This Month	Change This Year
Vehicles & Motor Equip	2,117,302.69	2,072,713.69	1,986,984.87	44,589.00	130,317.82
Furnishings & Equipment	34,031,076.68	33,974,398.68	33,999,111.41	56,678.00	31,965.27
Accumulated Depreciation-Furni	500,714.68	499,988.22	495,601.46	730.46	5,113.22
AccDeprec-Air Tools	7,784,275.66	7,714,793.28	1,513,937.80	39,442.38	240,297.86
AccDeprec-Communications Eqt.	7,972,761.07	7,492,476.99	6,917,282.19	100,284.10	675,478.90
AccDeprec-Computer Equip	934,293.24	702,368.42	633,099.82	12,534.82	81,803.44
AccDeprec-Furniture Equip	337,852.23	331,024.14	290,055.66	9,111.28	63,778.96
AccDeprec-Generator Sets	11,903.36	11,184.11	10,743.37	6,828.08	47,796.55
AccDeprec-Load & Unload Equip	5,949.15	5,833.50	5,132.60	1,22.65	49,797.10
AccDeprec-Mowing Equip	1,154,636.65	1,143,971.75	1,204,413.75	10,664.80	7,477.10
AccDeprec-Other Equip	12,713.80	12,473.96	11,027.92	240.84	1,685.48
AccDeprec-Power Tools	9,830.06	9,360.68	6,544.40	469.38	3,285.66
AccDeprec-Safety Equip	201,258.95	199,276.38	198,790.19	1,982.37	2,468.56
AccDeprec-Shop Equip	1,569,525.38	1,544,145.12	1,414,234.02	22,151.93	155,062.95
AccDeprec-Tractors & Motor Equ	1,061,525.38	1,038,473.45	929,733.34	23,151.93	131,892.04
Accumulated Depreciation-Furni	15,862,252.39	15,634,428.95	14,501,748.13	227,823.44	1,360,504.26
Capital Leases					
Capital Leases					
Accumulated Amortization-Capit					
AccAmort-Capital Leases					
Accumulated Amortization-Capit					
Deferred Long Term Asset Cost					
Deferred Long Term Asset Cost					
Pension-Deferred Outflows Res	6,176,941.00	6,176,941.00	6,176,941.00		
Pension-Deferred Outflow Res	6,176,941.00	6,176,941.00	6,176,941.00		
Property, Plant & Equipment	118,609,218.20	119,070,325.48	121,970,006.93	461,107.28	3,360,788.73
Total Assets	242,019,399.95	240,641,880.99	237,955,165.45	1,377,518.96	4,064,234.50
Total Liabilities & Capital					
Current Liabilities					
Accounts Payable					
Accounts Payable Custom					
Accounts Payable GSA					

	Amount Current	Last Month End	Last Year End	Change This Month	Change This Year
Accounts Payable Others	46,936.33	46,936.33	374,284.52	227,626.13	327,348.19
Accounts Payable Trade	1,137,468.82	909,842.69	1,788,892.56		631,423.68
Received Not Vouchered					
Accounts Payable	1,184,405.15	956,779.02	2,163,177.02	227,626.13	978,771.87
Current Loan/Bond Payable					
Current ANZ (USDA) Loan Payable	3,178.71	3,178.71	3,178.71		
CU ANZ (USDA) 12M Loan Payable					
CU BOG 10M SLE Loan Payable	3,178.71	3,178.71	3,178.71		
CU BOG 2M USDA Direct Loan					
CU Bond Payable					
Due to Public Utilities					
Due to GPA					
Due to GWA					
Due to GWA					
Due to Public Utilities					
Accrued Interest Payable	1,013,064.11	1,013,064.11	811,840.80		201,223.31
Accrued Interest Payable					
Accrued Bond Interest Payable	1,013,064.11	1,013,064.11	811,840.80		201,223.31
Accrued Interest Payable					
Deferred Revenues-DOD Moderniz	61,769.01	61,769.01	51,769.01		131,460.17
Deferred Revenues - GEDA	105,718.75	105,718.75	237,178.92		10,586.91
Deferred Revenues -Leases			50,550.53		90,550.53
Deferred Revenues Marinas					
Deferred Revenues	43,949.74	43,949.74	276,547.35		232,597.61
Deferred Revenues					
Accrued Expenses	941,942.39	807,849.25	809,757.71	134,093.14	132,184.68
Accrued Payroll					
Accrued Vacation Pay-Current	1,448,036.61	1,426,547.35	1,267,947.10	21,489.22	180,089.51
Accrued Vacation Pay					
Accrued Earthquake Cost					
Accrued Cola/Supplemental					
Accrued Typhoon Cost					
Accrued Medicare Tax					
Accrued Federal Grant					
Accrued Insurance Payables	20,297.65	20,297.65	15,896.42	76,990.76	4,401.24
Accrued Employee Dedications Payable	393,574.83	316,584.07	318,280.16		75,294.67
Accrued Employee Tax Payable					
Accrued Miscellaneous Deductions					
Accrued Death & Disability Ins					
Accrued Retirement Contributions					
Accrued Retirement Compensation Plan Pay					
Accrued Retirement Compensation Plan					
Deferred Supplemental Plan					

	Amount Current	Last Month End	Last Year End	Change This Month	Change This Year
Accrued Expenses	2,803,851.49	2,571,278.37	2,411,881.39	232,573.12	391,970.10
Security Deposits	85,831.20	85,831.20	84,565.82	0.00	1,265.38
Security Deposits - Space Leas	32,347.82	32,347.82	32,421.82	0.00	74.00
Security Deposits	118,179.02	118,179.02	116,987.64	0.00	1,191.38
Capital Lease Obligations- Cur					
Capitl Lease Obligations- Cur					
Capital Lease Obligations- Cur					
Other Current Liabilities					
Reserve Shortage/Property Dama					
Lease Payable - GEDA					
Other Current Liabilities	5,163,449.51	4,703,250.26	5,780,434.20	460,199.25	616,984.69
Current Liabilities					
Non Current Liabilities					
Long Term Accrued Expenses	56,767,410.00	56,767,410.00	56,767,410.00	0.00	0.00
Unfunded Retirement Contributi	552,540.11	552,540.11	552,540.11	0.00	0.00
Accrued Vacation Pay-Long Term	993,730.72	993,730.72	993,730.72	0.00	0.00
Accrued Sick Live(DC)-Long Term					
Contingent Liability					
Long Term Accrued Expenses	58,313,680.83	58,313,680.83	58,313,680.83	0.00	0.00
Pension-Deferred Inflow of Res	1,008,960.00	1,008,960.00	1,008,960.00	0.00	0.00
Pension-Deferred Inflow of Res	1,008,960.00	1,008,960.00	1,008,960.00	0.00	0.00
Capital Lease Obligations					
Capital Lease Obligations					
Capital Lease Obligations					
Capital Lease Obligations					
Long Term Loan Payables					
LT-ANZ (USDA) Loan Payable 3.5	71,445,000.00	71,445,000.00	71,445,000.00	0.00	0.00
LT-ANZ (USDA) Loan Payable 1.2M	5,208,474.61	5,208,474.61	5,252,614.23	0.00	44,139.62
LT-BOG SLE Loan Payable 10M					
LT-BOG \$2M USDA Direct Loan					
Long Term Loan Payables	76,653,474.61	76,653,474.61	76,697,614.23	0.00	44,139.62
Long Term Bond Payables					
LT-2018 BOND Payable					
LT-2018 BOND Cost of Issuance					
LT-2018 BOND Premium					
Long Term Bond Payables					

	Amount Current	Last Month End	Last Year End	Change This Month	Change This Year
Non Current Liabilities	135,976,115.44	135,976,115.44	136,020,255.06		44,139.62
Capital Contributions & Equity					
Contributions-Local Government	3,563,000.00	3,563,000.00	3,563,000.00		
Contributions-Land	483,688.19	483,688.19	483,688.19		
Contributions-Property & Equip	13,413,670.45	13,413,670.45	13,413,670.45		
Contributions-General Fund	100,000.00	100,000.00	100,000.00		
Contributions-S&E-P.A.	7,000.00	7,000.00	7,000.00		
Contributions-PMG (Portion of					
Contributions-Local Government	17,567,358.64	17,567,358.64	17,567,358.64		
Contributions-Federal Governme	10,321,126.26	10,321,126.26	10,321,126.26		
Contributions-U.S. Govt Rehab	1,492,676.57	1,492,676.57	1,492,676.57		
Contributions-Economic Develop	6,508,875.60	6,508,875.60	6,508,875.60		
Contributions-U.S. Department	53,763.30	53,763.30	53,763.30		
Contributions-U.S. Govt-Fema					
Contributions-Federal Governme	18,376,441.73	18,376,441.73	18,376,441.73		
Accumulated Earnings					
Accumulated Earnings	33,770,010.75	33,770,010.75	33,770,010.75		
Accumulated Earnings (Deficit)	93,980,681.57	93,980,681.57	93,980,681.57		
Accumulated Earnings	60,210,670.82	60,210,670.82	60,210,670.82		
Net Earnings (Loss)	4,725,363.81	3,808,044.10	5.00	917,319.71	4,725,358.81
Capital Contributions & Equity	100,879,835.00	99,962,515.29	96,154,476.19	917,319.71	4,725,358.81
Total Liabilities & Capital	242,019,399.95	240,641,880.99	237,955,165.45	1,377,518.96	4,064,234.50

PORT AUTHORITY OF GUAM

A/R AGING AS OF 04/30/2019

Number	Name	Open	Current	31 - 60	61 - 90	91 - 120	Over 120	Amount	Date	Remarks
13388	Guam Industrial Serv. Inc.	\$ 210,939.80	\$ 4,949.15	\$ 14,031.74	\$ 21,171.49	\$ 11,760.00	\$ 158,427.42	\$ 23,520.00	9/26/2018	Management working on settlement
7394	Marianas Steamship Agency	\$ 342,434.20	\$ 304,010.69		\$ 94.43			\$ 1,750.47	6/6/2019	Invoice #78364 remains in dispute (Guam Industrial/Guam Shipyard)
11776	Customs and Quarantine Age	\$ 13,478.40		\$ 449.28	\$ 449.28	\$ 449.28	\$ 12,130.56	\$ 898.56	5/15/2019	Govt claim was filed on 06/11/2019. May take up to 6 months.
7376	Matson Navigation Inc.	\$ 3,158,772.68	\$ 2,832,858.23	\$ 7,085.28	\$ 307,759.40		\$ 11,068.77	\$ 991,900.27	6/12/2019	Matson only has one outstanding invoice over 60 days past due in the amount of \$1049.25.
7106	Shiel Guam, Inc.	\$ 13,650.00		\$ 1,950.00	\$ 1,950.00	\$ 1,950.00	\$ 7,800.00	\$ 1,950.00	11/4/2011	Pending legal contract assignment
9620	Alupang Beach Club	\$ 6,265.80	\$ 75.00				\$ 6,190.80	\$ 287.51	5/31/2019	A Denial letter in regards to dispute for water charges is being processed
72087	American President Lines L	\$ 2,018,659.47	\$ 1,410,926.46	\$ 601,526.02	\$ 0.08	\$ 98.34	\$ 6,108.57	\$ 3,007.00	6/11/2019	APL has no outstanding invoices over 61 days past due.
11791	Guam Shipyard	\$ 3,271.50	\$ 263.38	\$ 49.56	\$ 24.78	\$ 99.12	\$ 2,834.66	\$ 33.98	5/1/2019	Management working on settlement
15708	HMM Guam Inc.	\$ 1,227.24				\$ 1,227.24			5/1/2019	Small Claims documents are being compiled for submission.
14482	Quinata, John M.	\$ 1,980.00	\$ 220.00	\$ 220.00	\$ 220.00	\$ 220.00	\$ 1,100.00	\$ 412.50	12/19/2016	Notice to Vacate was placed on customer's vessel
9814	Fentress, Michael D.	\$ 710.98					\$ 710.98	\$ 200.00	4/30/2019	Ms. Fentress is no longer utilizing slip, past due balance is from previous year. She has made an agreement to pay \$200.00 a month to clear past due balance
13202	Department of Administrat	\$ 553.20	\$ (30.00)				\$ 583.20	\$ 4,645.40	11/16/2018	Following up with DGA.
15663	Okeanos Marianas	\$ 250.00					\$ 250.00		5/15/2019	Customer will be sent Certified Final Notice
15103	Collier, Ernest	\$ 75.00					\$ 75.00	\$ 295.00	5/15/2019	ACCOUNT IS UP TO DATE
14143	Sait Shaker Yacht Charter	\$ 24.04					\$ 24.04	\$ 269.30	5/16/2019	Final Notice has been sent.
11756	V. Angoco's Trucking	\$ 762.86	\$ (413.14)	\$ 572.28	\$ 547.50	\$ 547.50	\$ 1,176.00	\$ 1,176.00	6/6/2019	ACCOUNT IS UP TO DATE
15095	Chen, Steven	\$ 2,214.78	\$ 547.50	\$ 340.00	\$ 340.00	\$ 340.00	\$ 1,207.50	\$ 1,207.50	12/26/2018	Final Notice (Certified Mail) was sent to customer.
14923	Shoguns	\$ 1,360.00	\$ 340.00	\$ 340.00	\$ 340.00	\$ 340.00			1/20/2017	Final Notice (Certified Mail) was sent to customer.
14963	Castro, Jesse AR	\$ 2,077.50	\$ 770.00	\$ 495.00	\$ 495.00	\$ 317.50		\$ 300.00	5/31/2019	Mr. Castro has been making payments biweekly to clear account.
15088	Shida, Paul H.	\$ 280.00	\$ 70.00	\$ 70.00	\$ 70.00	\$ 70.00	\$ 70.00	\$ 520.00	5/2/2019	ACCOUNT IS UP TO DATE
13099	Guam Fishermen's Cooperati	\$ 400.00	\$ 50.00	\$ 50.00	\$ 50.00	\$ 50.00	\$ 50.00	\$ 700.00	5/14/2019	ACCOUNT IS UP TO DATE
14436	John C. Arguon/Miyung J. Par	\$ 200.00	\$ 50.00	\$ 50.00	\$ 50.00	\$ 50.00	\$ 50.00	\$ 400.00	5/24/2019	ACCOUNT IS UP TO DATE
15807	Romero, Nicole R.	\$ 24.78					\$ 24.78	\$ 50.00	11/13/2018	Final Notice will be sent to customer
7341	Amblyth Shipping & Trading	\$ 177,849.86	\$ 170,664.00	\$ 5,729.36				\$ 13,951.68	6/5/2019	All past due over 120 days have been cleared, Working with Amblyth to clear all others.
13604	Lewis, Erik C.	\$ 700.00	\$ 150.00	\$ 150.00				\$ 325.00	1/29/2013	Final Notice will be sent to customer
8483	Scuba Company	\$ 2,239.73	\$ 1,449.45	\$ 395.14				\$ 1,755.36	5/31/2019	past due invoices over 61 days have been cleared.
13064	Sombridge Guam, Inc.	\$ 14,944.52	\$ 374.04	\$ 13,823.38				\$ 12,203.96	5/29/2019	Late Notice will be sent out
15651	Barcellia, Roland/Genylin	\$ 412.50	\$ 137.50	\$ 137.50				\$ 420.00	5/17/2019	Late Notice will be sent out
14429	Weibschner, Walden	\$ 155.00	\$ 40.00	\$ 40.00				\$ 235.00	5/31/2019	ACCOUNT IS UP TO DATE
7350	Consolidated Transportatio	\$ 655,165.36	\$ 655,106.36		\$ 59.02			\$ 183,226.18	6/11/2019	Invoices over 90 days have been cleared.
14527	UMS Heavy Equipment Rental	\$ 462.85	\$ 12.18	\$ 411.60				\$ 823.20	3/21/2019	Final Notice will be sent to customer
15079	McDermott, Brian	\$ 113.69		\$ 82.37				\$ 790.55	1/18/2019	2nd Notice will be sent to customer
7866	Guam Transport & Warehouse	\$ 16.82						\$ 588.00	6/10/2019	\$16.82 is interest invoice. Bernie from accounts payable advised payment will be made no later than June 21
13121	Tidewater Distributors Inc	\$ 729.14	\$ 718.62		\$ 10.52			\$ 5,807.97	5/14/2019	2nd Notice will be sent to customer
14381	Apra Dive & Marine Sports.	\$ 2,514.54	\$ 946.34	\$ 1,568.20				\$ 3,000.00	5/31/2019	Late Notice will be sent out
14283	Brand, Inc.	\$ 1,111.00		\$ 1,111.00				\$ 2,222.00	5/8/2019	Ken is currently off island, will make arrangements for someone to make payment
14061	AR Snrtrier Canteen/Caret	\$ 673.35	\$ 11.46	\$ 659.89				\$ 1,403.84	6/4/2019	Late Notice will be sent out
15099	Williams, Michael E.	\$ 716.52	\$ 99.12	\$ 617.40				\$ 617.40	5/10/2019	Customer will be in no later than June 21 to make a payment to clear past due
10778	Real World Diving	\$ 841.49	\$ 240.37	\$ 601.12				\$ 290.00	4/25/2019	2nd Notice will be sent to customer
14161	Isla Trucking	\$ 598.73	\$ 10.73	\$ 588.00				\$ 1,000.00	5/28/2019	2nd Notice will be sent to customer
15857	Suh, Jimmy P.	\$ 425.00	\$ 212.50	\$ 212.50				\$ 212.50	5/24/2019	2nd Notice will be sent to customer
15699	Shut Up and Fish Guam	\$ 250.00	\$ 75.00	\$ 175.00				\$ 687.50	2/20/2019	Final Notice will be sent to customer
15774	Quinata, Jose M.	\$ 275.00	\$ 137.50	\$ 137.50				\$ 275.00	5/17/2019	Customer will be stopping by no later than 06/14/2019 to clear past due
12518	Balajadia, Robert M.	\$ 49.34	\$ (25.00)	\$ 74.34				\$ 267.54	5/14/2019	Customer is disputing water charges, working with John IG (Commercial) to resolve matter.
14642	Tristar Terminal Guam, In	\$ 326,938.21	\$ 326,938.21					\$ 128,835.26	6/4/2019	
14444	Office of the Governor of	\$ 85,783.42	\$ 85,783.42					\$ 82,825.61	6/12/2019	
10725	Mobil Oil Guam, Inc.	\$ 76,199.33	\$ 76,199.33					\$ 29,286.60	6/11/2019	
14610	U.S. Department of Homeland	\$ 53,150.00	\$ 53,150.00					\$ 63,020.92	5/22/2019	
14171	Norton Lily International	\$ 17,667.14	\$ 17,667.14					\$ 13.00	6/11/2019	

Number	Name	Open	Current	31 - 60	61 - 90	91 - 120	Over 120	Amount	Date	Remarks
7413	Seabridge Inc.	\$ 7,858.21	\$ 7,858.21					\$ 7,975.81	5/30/2019	
13666	Lotus Pacific Trading, In	\$ 3,069.93	\$ 3,069.93					\$ 780.00	6/7/2019	
14431	Quinata, Carlos DBA:Herita	\$ 465.37	\$ 465.37					\$ 777.87	5/30/2019	
9831	Fish Hook Inc.	\$ 410.00	\$ 410.00					\$ 410.00	5/29/2019	
1490	Guam Dolphin's Marine Spor	\$ 396.48	\$ 396.48					\$ 1,874.53	6/5/2019	
1467	Guam Telephone Authority	\$ 345.43	\$ 345.43					\$ 1,050.00	6/7/2019	
15467	Baird, Austin & Belinda	\$ 329.09	\$ 329.09					\$ 589.09	6/10/2019	
14368	Subcom, LLC	\$ 296.44	\$ 296.44					\$ 13,910.40	6/11/2019	
15823	Card, Philip & Arreta	\$ 275.00	\$ 275.00					\$ 275.00	1/24/2019	
15784	Bradley, Daniel A.	\$ 162.50	\$ 162.50					\$ 450.00	2/25/2019	
14534	Martin, Dwight	\$ 150.00	\$ 150.00					\$ 300.00	5/24/2019	
14687	Phillip, Vincer	\$ 137.00	\$ 137.00					\$ 137.50	6/3/2019	
14485	Rains, Julian T.	\$ 125.00	\$ 125.00					\$ 860.00	4/4/2019	
14527	Fredrick, Bruce & Dianne	\$ 80.00	\$ 80.00					\$ 510.00	2/6/2019	
14582	Packbier, Paul E.R./RCR Gu	\$ 80.00	\$ 80.00					\$ 2,680.00	5/30/2019	
13537	Wang, Jackie	\$ 50.00	\$ 50.00					\$ 830.00	6/11/2019	
15370	1524 Inc./Layla Dolphin Cr	\$ 50.00	\$ 50.00					\$ 790.00	6/10/2019	
15844	SDM Holdings	\$ 50.00	\$ 50.00					\$ 355.32	5/13/2019	
15593	Guam Ocean Adventures, LLC	\$ 44.20	\$ 44.20					\$ 360.00	5/31/2019	
13633	Yu, Niko K.	\$ 40.00	\$ 40.00					\$ 17.42	6/7/2019	
13803	Korando Corp.	\$ 36.86	\$ 36.86					\$ 55.92	6/10/2019	
11778	Dewitt Trans Services of G	\$ 28.83	\$ 28.83					\$ 112.50	5/31/2019	
10735	Plummer, Peter J.	\$ 25.00	\$ 25.00					\$ 220.00	5/10/2019	
13527	Hart, John R.	\$ 25.00	\$ 25.00					\$ 75.00	5/30/2019	
14656	Pangellian, Enrique	\$ 25.00	\$ 25.00					\$ 128,835.26	6/4/2019	
14642	Trister Terminal's Guam, In	\$ (0.01)	\$ (0.01)					\$ 1,265.38	6/10/2019	
15811	Ride the Ducks, LLC	\$ (0.02)	\$ (0.02)					\$ 137.50	5/8/2019	
15242	Orcutt, Kenneth D.	\$ (0.50)	\$ (0.50)					\$ 472.16	5/14/2019	
15798	Edson, Roger	\$ (2.78)	\$ (2.78)					\$ 84.67	6/3/2019	
15859	GRISOSTOMO, BENNY O.	\$ (5.00)	\$ (5.00)					\$ 5.00	3/8/2019	
11907	Taitano, John	\$ (7.00)	\$ (7.00)					\$ 108.00	5/9/2019	
15353	Young, Diane & Jerry	\$ (25.00)	\$ (25.00)					\$ 150.00	6/7/2019	
15548	Makania Fishing Charters	\$ (25.00)	\$ (25.00)					\$ 87.50	5/14/2019	
15727	Cossas Di Framiglia Holdings	\$ (25.00)	\$ (25.00)					\$ 850.00	5/30/2019	
12509	Hanley, Timothy F.	\$ (27.50)	\$ (27.50)					\$ 105.00	4/9/2019	
14387	Guam Sungwoe Ferry Corp.	\$ (28.98)	\$ (28.98)					\$ 896.22	5/22/2019	
12397	Cruz, John R.	\$ (40.00)	\$ (40.00)					\$ 160.00	8/29/2017	
15235	Oil Spill Response Operati	\$ (48.90)	\$ (48.90)					\$ 3,883.06	6/9/2019	
1300	SANTOS, RAYMOND B.	\$ (50.00)	\$ (50.00)							
1749	CARBULLIDO, RITA B.	\$ (50.00)	\$ (50.00)					\$ 30.00	9/1/2017	
15400	Mendiola, Zachary	\$ (50.00)	\$ (50.00)					\$ 50.00	12/17/2018	
15403	Carbulla, Aurora F.	\$ (50.00)	\$ (50.00)					\$ 50.00	4/29/2019	
15488	Love, Rick	\$ (50.00)	\$ (50.00)					\$ 50.00	5/30/2019	
15527	Walsh, Joshua	\$ (50.00)	\$ (50.00)					\$ 50.00	12/28/2018	
15597	Gorman, John T.	\$ (50.00)	\$ (50.00)					\$ 50.00	6/13/2017	
15674	Ching, Donald	\$ (50.00)	\$ (50.00)					\$ 15.00	2/20/2018	
15677	Reinhardt, Kyle Christophe	\$ (50.00)	\$ (50.00)					\$ 50.00	3/26/2018	
15682	Marges, Lijying D. T.	\$ (50.00)	\$ (50.00)							
15694	Hoeogl, Gerry J.	\$ (50.00)	\$ (50.00)					\$ 50.00	3/16/2018	
15713	SCHERER, ROBERT I	\$ (50.00)	\$ (50.00)					\$ 50.00	4/20/2018	
15726	Garrido, Keoni L.	\$ (50.00)	\$ (50.00)					\$ 50.00	6/19/2018	
15758	Dunn, Timothy J.	\$ (50.00)	\$ (50.00)					\$ 50.00	4/20/2018	
15792	Denton, Walter	\$ (50.00)	\$ (50.00)					\$ 50.00	8/31/2018	
15880	Casil, Christopher	\$ (55.92)	\$ (55.92)					\$ 50.00	4/22/2019	
13800	HAWTHORNE PACIFIC CORP.	\$ (55.92)	\$ (55.92)					\$ 55.92	5/13/2019	
14744	Harvest Ministries	\$ (75.00)	\$ (75.00)					\$ 75.00	4/30/2019	
15740	Aquai, Eric TL	\$ (75.00)	\$ (75.00)					\$ 150.00	3/28/2019	
15849	Wilson, Jared	\$ (83.85)	\$ (83.85)					\$ 103.51	3/1/2019	
13190	GENITY BLUE DIVING SHOP	\$ (100.00)	\$ (100.00)					\$ 300.00	2/11/2019	
12408	Marinas Yacht Club	\$ (100.00)	\$ (100.00)					\$ 100.00	4/2/2019	
15748	Nugara, Henry L.	\$ (101.84)	\$ (101.84)					\$ 100.00	6/1/2018	
14290	DGX	\$ (110.00)	\$ (110.00)					\$ 118.04	5/30/2019	
15749	Lagutang, Herbert C.D.	\$ (110.00)	\$ (110.00)					\$ 340.00	5/15/2019	

Number	Name	Open	Current	31 - 60	61 - 90	91 - 120	Over 120	Amount	Date	Remarks
13081	Waterman, Akio/Fortiana & C	\$ (128.00)	\$ (128.00)					\$ 147.00	4/10/2017	
14013	Brandt, Jim or Bonnie	\$ (137.50)	\$ (137.50)					\$ 137.50	5/23/2019	
14570	Terfje, Glenn	\$ (137.50)	\$ (137.50)					\$ 137.50	1/4/2018	
15692	Jo, Myeongseon	\$ (137.50)	\$ (137.50)					\$ 390.96	6/27/2018	
1500	Atlanta Guam	\$ (142.47)	\$ (142.47)					\$ 3,057.60	5/17/2019	
12373	Beuhley, Jim/Mark Baldyga	\$ (150.00)	\$ (150.00)					\$ 50.00	8/27/2018	
15433	Prestke, Burghard	\$ (150.00)	\$ (150.00)					\$ 100.00	2/28/2019	
15818	Mendolia, Janus C.	\$ (160.00)	\$ (160.00)					\$ 240.00	2/13/2019	
14909	Propacific Builder Corpora	\$ (194.99)	\$ (194.99)					\$ 457.22	2/25/2019	
13677	Brown, Roy	\$ (220.00)	\$ (220.00)					\$ 174.45	5/17/2017	
15242	Ames, Todd	\$ (220.00)	\$ (220.00)					\$ 137.50	4/29/2019	
13671	Landscape Management Syste	\$ (236.13)	\$ (236.13)					\$ 10,496.90	2/19/2019	
12338	Temblata, Masao DBA:Ten Boa	\$ (262.50)	\$ (262.50)					\$ 87.50	4/9/2019	
14244	Flores, Joaquin C.	\$ (275.00)	\$ (275.00)					\$ 137.50	5/29/2019	
14150	PIER, KENNETH	\$ (275.00)	\$ (275.00)					\$ 275.00	4/30/2019	
14633	Eusebio, Ricardo B.	\$ (280.00)	\$ (280.00)					\$ 360.00	3/7/2019	
8336	Pacific Trucking, Inc.	\$ (292.38)	\$ (292.38)					\$ 59.02	5/13/2019	
11775	Charles Marine Sports Club	\$ (295.10)	\$ (295.10)					\$ 1,003.20	6/5/2019	
12895	Bell, James C. or Cynthia	\$ (300.00)	\$ (300.00)					\$ 450.00	4/4/2019	
15854	Petrick, Thomas	\$ (319.88)	\$ (319.88)					\$ 159.94	6/11/2019	
9697	Camacho, Antonio Frank C.	\$ (320.00)	\$ (320.00)					\$ 480.00	12/5/2018	
12706	Guam Seawalker Tours	\$ (340.00)	\$ (340.00)					\$ 340.00	5/24/2019	
15031	Asia Pacific Wholesalers	\$ (342.31)	\$ (342.31)					\$ 2,922.00	7/3/2018	
12394	Wong, Billy	\$ (350.00)	\$ (350.00)					\$ 350.00	6/3/2019	
13545	Perez, Vincent T./VERN Per	\$ (400.00)	\$ (400.00)					\$ 600.00	12/11/2018	
14409	Robinson, Merlie Ann	\$ (400.00)	\$ (400.00)					\$ 600.00	4/4/2019	
15205	RIDLON, DANIEL A	\$ (400.00)	\$ (400.00)					\$ 600.00	2/14/2019	
15428	Stewart, Michael	\$ (412.50)	\$ (412.50)					\$ 825.00	1/15/2019	
8352	Paradise Aqua Corp.	\$ (423.36)	\$ (423.36)					\$ 423.36	5/30/2019	
15290	Murrell, Robert Dan	\$ (425.00)	\$ (425.00)					\$ 675.00	2/13/2019	
14141	Core Tech International	\$ (425.15)	\$ (425.15)					\$ 6,415.50	12/31/2018	
15709	Sam, Gerald L.	\$ (440.00)	\$ (440.00)					\$ 440.00	3/20/2019	
9849	Flores, William A.	\$ (450.00)	\$ (450.00)					\$ 600.00	1/11/2019	
14791	Fong, Francis	\$ (451.49)	\$ (451.49)					\$ 300.00	3/28/2019	
14136	San Nicolas, Jose T.	\$ (470.00)	\$ (470.00)					\$ 200.00	6/12/2019	
15612	Churchill, Charles D.	\$ (488.60)	\$ (488.60)					\$ 1,200.00	5/3/2019	
15503	Y&Y LLC DBA: Sunny Divers	\$ (510.00)	\$ (510.00)					\$ 840.00	3/1/2019	
15207	SOUTH PACIFIC DREAM CORPOR	\$ (542.50)	\$ (542.50)					\$ 140.00	6/11/2019	
10621	Perez, Thomas L.G.	\$ (560.00)	\$ (560.00)					\$ 960.00	11/26/2018	
14210	Kaneshiro, Roger J., D.D.S	\$ (640.00)	\$ (640.00)					\$ 960.00	1/9/2019	
13191	Aguon, Sonia V. or Paul SN	\$ (664.51)	\$ (664.51)					\$ 120.00	2/1/2019	
15475	Tropical Island Marine Spo	\$ (767.34)	\$ (767.34)					\$ 1,139.04	4/30/2019	
9478	Triple B Forwarders	\$ (785.14)	\$ (785.14)					\$ 59.02	6/4/2019	
9401	Tasi Tours Inc.	\$ (846.10)	\$ (846.10)					\$ 582.12	6/7/2019	
12748	Radiocon	\$ (849.48)	\$ (849.48)					\$ 1,600.00	1/14/2019	
1487	Guam Federation of Teacher	\$ (859.00)	\$ (859.00)					\$ 1,305.00	6/11/2019	
15152	SUNNY SIDE UP GUAM INC.	\$ (1,160.00)	\$ (1,160.00)					\$ 1,076.46	6/6/2019	
14364	P.S.V. Corp./Jo, GI Bum	\$ (1,181.46)	\$ (1,181.46)					\$ 1,310.00	4/15/2019	
15718	Larsen, Helge	\$ (1,200.00)	\$ (1,200.00)					\$ 525.00	9/26/2018	
10250	Morrice Equipment LLC	\$ (1,241.08)	\$ (1,241.08)					\$ 1,950.00	1/9/2019	
15582	Shavers, George Kenneth	\$ (1,300.00)	\$ (1,300.00)					\$ 178.69	4/24/2019	
13314	Island Certs Corporation	\$ (1,466.19)	\$ (1,466.19)					\$ 403.68	11/6/2018	
7368	Cabus Marine Corp	\$ (24,255.62)	\$ (24,255.62)					\$ 2,714.75	6/7/2019	
13344	KALS Corporation	\$ (27,149.17)	\$ (27,149.17)					\$ 29,742.00	5/22/2019	
13030	South Pacific Petroleum Co	\$ (29,317.22)	\$ (29,317.22)					\$ 172,000.00	3/1/2019	
12511	Hanson Permanente Cement o	\$ (395,145.88)	\$ (395,145.88)					\$ 5,814.03	6/5/2019	
14778	PR&E Holding LLC	\$ (568,199.78)	\$ (568,199.78)							
TOTAL		\$ 6,341,489.82	\$ 5,087,992.57	\$ 653,403.46	\$ 336,079.95	\$ 17,152.52	\$ 246,861.32			

Port Authority of Guam
Accounts Payable Aging Report

30-Apr-19

Supplier	Supplier Name	Co	Balance Open	Current	Aging				Over 120	Remark
					46 - 60	61 - 90	91 - 120			
13280	America's Best El	50	674.7	674.7						
11967	American Assc. of	50	-2850	-2850						
12196	American Associat	50	1205	1205						
11805	American Printing	50	1000	1000						
14221	Association of Go	50	135	135						
12497	AC Auto Air Condi	50	420	420						
15882	ACFALLE, CLAUDIA	50	1392.5	1392.5						
14337	ALAN SEARLE & ASS	50	5800	5800						
15262	AWESOME HARDWARE	50	1144.6	1144.6						
15733	AYM INTERNATIONAL	50	57773.22	57773.22						
11768	Benson Guam Enter	50	2473.2	2473.2						
1302	BALAJADIA, DERRIC	50	48	48						
13495	BME & Son Inc.	50	67442.68					67442.68		
11831	Cash	50	481.1	481.1						
13684	Chang Chin Inc.	50	875	875						
15873	Charqualaf, Antho	50	50	50						
14965	CARRIDGE WORLD G	50	233.94					233.94	late submittal	
13935	D.S.Y. Corporatio	50	1150	1150						
14510	Data Management R	50	1903.5	1903.5						
15418	Dela Cruz, Carl	50	50	50						
11974	Deloitte & Touche	50	30000	30000						
13603	DHL Express (USA)	50	175.76	175.76						
15251	ECOLAB (GUAM) LLC	50	753.73	753.73						
15353	ERC Hardware Expr	50	60	60						
13618	ERC Trading, Inc.	50	519.6	519.6						
14763	Fastenal Company	50	1549.65	1549.65						

Port Authority of Guam
Accounts Payable Aging Report

30-Apr-19

Supplier	Supplier Name	Co	Balance Open	Current	Aging				Remark
					46 - 60	61 - 90	91 - 120	Over 120	
14056	Gov't of Guam Ret	50	18.41					18.41	
11471	Gov't of Guam Ret	50	-145825.94	-145825.94					
9128	Graphic Center, I	50	1400	1400					
7747	Guahan Waste Cont	50	462.7					462.7	
7851	Guam Power Author	50	101251.87	101251.87					
12126	Guam Waterworks A	50	-2190.96	-70179.27	2365.47	65622.84			
15288	GuamWEBZ	50	1026.67	1026.67					
14761	G4S Security Syst	50	339112.77					339112.8	
14320	Home Depot (The)	50	1620.74	1620.74					
9187	Hydra-Air Pacific	50	4958.59	4958.59					
15332	Hydraulink Guam	50	266.76	266.76					
13800	HAWTHORNE PACIFIC	50	1732.31	1634.73		97.58			
13092	I Connect	50	7902.38	7902.38					
11784	Island Choice Dri	50	829.5	829.5					
9224	Island Equipment	50	809.4	809.4					
14363	IAN CORPORATION	50	50324.74	50324.74					
9291	J.V. Internationa	50	2761.25	2761.25					
9275	JMI-EDISON	50	6460	6460					
13982	JOHNSTONE SUPPLY	50	990.6	990.6					
15872	Koki, Isa Marie C	50	50	50					
13803	Korando Corp.	50	225261.45	225261.45					
14048	Lagu Sanitation	50	8118	8118					
15029	M.D. WHOLESale	50	333.6	333.6					
7376	Matson Navigation	50	13462	13462					
11929	Megabyte	50	219	219					
10188	Mid-Pac Far East	50	2346.9	2346.9					

Port Authority of Guam
Accounts Payable Aging Report

30-Apr-19

Supplier	Supplier Name	Co	Balance Open	Current	Aging					Remark
					46 - 60	61 - 90	91 - 120	Over 120		
10250	Morrice Equipment	50	17019	3387.6					13631.4	
12551	M80 System Inc.	50	5629	5629						
12510	N.C. Macario & As	50	49974.13	49974.13						
10330	Napa Auto Parts	50	625.82	625.82						
1115	NELSON, GLENN B.	50	-2048.3	-2048.3						
12528	NEW MW Corporatio	50	500	500						
11811	Pacific Daily New	50	-22	-22						
13196	Pacific Human Res	50	213.68	213.68						
14994	Pacific Petroleum	50	2149.08	2149.08						
1515	Paintco Corpora	50	32.85	32.85						
14831	Phillips and Bord	50	62991.37	61137.5	1853.87					
14631	Public Utilities	50	12105.25			8315.78			3789.47	
11439	PAG Goodwill & Mio	50	50	50						
2058	PEREZ, JARED N.C.	50	125	125						
15341	PTI PACIFIC INC.	50	26.84	26.84						
13428	R & R Plus Co.	50	1455	1455						
10823	Reaction Supply C	50	192	192						
2054	RESPICIO, RORY J.	50	2261.25	2261.25						
15881	Sablan, Carmerita	50	50	50						
12987	South Pacific Env	50	4976.4	4976.4						
13030	South Pacific Pet	50	37258.12	37258.12						
1155	SANTOS, FRANCISCO	50	2261.25	2261.25						
2055	SHINOHARA, CONNIE	50	2261.25	2261.25						
15630	SOURCE RITE INC	50	885	-1090					1975	
15617	Taimanglo, Nathan	50	50	50						
15398	Terlaje, Miguel T	50	50						50	

Port Authority of Guam
Accounts Payable Aging Report
30-Apr-19

Supplier	Supplier Name	Co	Balance Open	Current	Aging				Remark
					46 - 60	61 - 90	91 - 120	Over 120	
12779	Travel Bag, Inc.	50	1708.75	1708.75					
11983	Treasurer of Guam	50	9284.16	9284.16					
14321	Triple J Express	50	472	472					
14642	Tristar Terminals	50	6421.7	6421.7					
11615	Tsang Brothers Co	50	1147	1147					
1871	TAITANO, MARIA D.	50	251.04	251.04					
15871	TASI MARINE CORP.	50	6074	6074					
11956	Workers Compensat	50	2630					2630	
14197	WSP/Parsons Brinc	50	105829.21	105829.21					
7253	Xerox Corporation	50	4415.05	4415.05					
50	Port Authority of Guam		1137468.82	629866.91	4219.34	74036.2		429346.4	

**Port Authority of Guam
Crane Surcharge Budget vs Actual
Variance Analysis- Unaudited
7 Months Ending 04/30/19**

Budget	%	Current Month			Variance	%	Budget	%	Year-to-Date		
		Actual	%	Variance					Actual	%	Variance
502,334	100	496,665	100	-5,669	-1.1	3,516,338	100	3,475,244	100	-41,094	-1.2
CRANE SURCHARGE REVENUES											
502,334	100	496,665	100	-5,669	-1.1	3,516,338	100	3,475,244	100	-41,094	-1.2
TOTAL REVENUES											
General & Administrative Expenses											
-76,891	15.3	-66,399	13.4	10,492	13.7	-538,237	15.3	-461,415	13.3	76,822	14.3
-6,236	1.2	-5,913	1.2	323	5.2	-43,652	1.2	-40,142	1.2	3,510	8
-17,356	3.5	-15,352	3.1	2,004	11.5	-121,492	3.5	-104,501	3	16,991	14
Other Benefits											
-21,667	4.3	-21,667	4.4		-100	-151,669	4.3	-151,667	4.4	2	-100
General Insurance											
-1,084	0.2	-152	0.2	932	86	-7,588	0.2	-1,194	0.2	6,394	84.3
Repairs & Maintenance											
-36,584	7.3	-4,074	0.8	32,510	88.9	-256,088	7.3	-75,379	2.2	180,709	70.6
-36,584	7.3	-9,363	1.9	27,221	74.4	-256,088	7.3	-135,519	3.9	120,569	47.1
Rep. & Maint.-Pola 16											
-36,584	7.3	-5,148	1	31,436	85.9	-256,088	7.3	-138,966	4	117,122	45.7
Rep. & Maint.-Pola 17											
-36,667	13.3	-67,438	13.6	-771	-1.2	-466,669	13.3	-472,069	13.6	-5,400	-1.2
Depreciation & Amortization											
-667	0.1	-1,060	0.2	-393	-59	-4,669	0.1	-18,840	0.5	-14,171	-303.5
Supplies											
-72,917	14.5	-13,462	2.7	59,455	81.5	-510,419	14.5	-13,462	0.4	496,957	97.4
Professional Services											
-6,249	1.2	-500	0.1	5,749	92	-43,743	1.2	-12,710	0.4	31,033	70.9
Other Contractual Ser											
Overhead Allocation											
Typhoon Expense											
General & Administrative Expenses											
-379,486	75.5	-345,288	69.5	34,198	9	-2,656,402	75.5	-2,556,460	73.6	99,942	3.8
OPERATING INCOME (LOSS)											
122,848	24.5	151,377	30.5	28,529	23.2	859,936	24.5	918,785	26.4	58,849	6.8
Other Expense											
-31,764	6.3			31,764	100	-222,348	6.3			222,348	100
Other Income & Expense											
-31,764	6.3			31,764	100	-222,348	6.3			222,348	100
DIRECT LABOR COSTS											
-411,250	81.9	-345,288	69.5	65,962	16	-2,878,750	81.9	-2,556,460	73.6	322,290	11.2
NET INCOME (LOSS)											
91,084	18.1	151,377	30.5	60,293	66.2	637,588	18.1	918,785	26.4	281,197	44.1



PORT OF GUAM

ATURIDATI PUETTON GUAHAN

Jose D. Leon Guerrero Commercial Port

1026 Cabras Highway, Suite 201, Piti, Guam 96925

Telephone: 671-477-5931/35 Facsimile: 671-477-2689/4445

Website: www.portguam.com



Lourdes A. Leon Guerrero

Governor of Guam

Joshua F. Tenorio

Lieutenant Governor

FINANCE-YTD - May 2019

Financial Highlights

Income Statement

Balance Sheet

Accounts Receivable Aging Summary Report

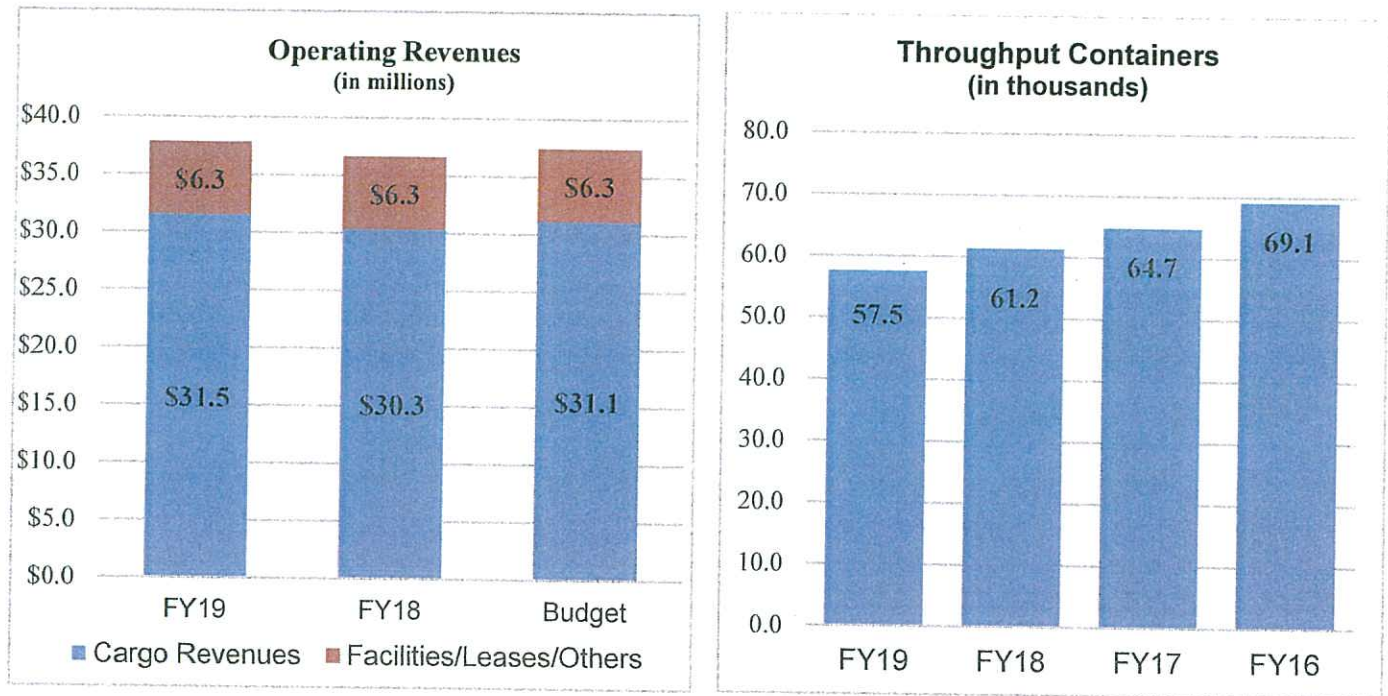
Accounts Payable Summary

Budget Lift/Transfer Monthly Activities

Crane Surcharge Income Statement

Financial Highlights – YTD May FY2019

Operating Performance:



REVENUES AND CARGO THROUGHPUT:

Total Operating Revenues as of May 2019 was \$37.8 million, which consist of \$31.5 million in cargo revenues and \$6.3 million in Facilities, Leases, and Other Services.

FY19 YTD cargo revenues is 4% higher than last year's total (\$30.3 mil) and 1% higher than Budget (\$31.1 mil).

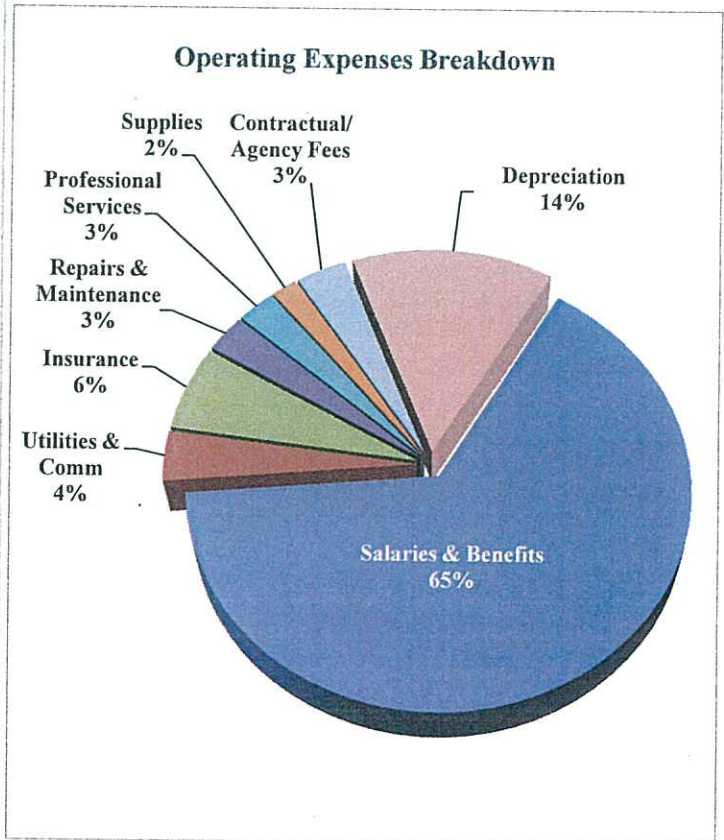
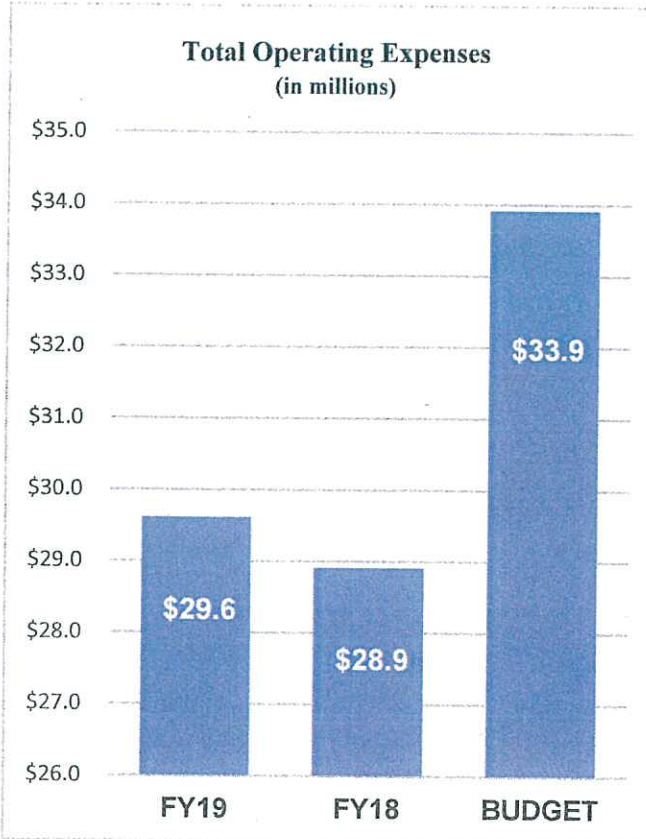
FY19 YTD Facilities, Leases, and Other Services is 1% lower than last year's total (\$6.3 mil) and .3% lower than budget (\$6.3 mil).

Overall Operating Revenues as of May is 1% higher than Budget (\$37.3 mil) and 3% higher than last year's year to date May (\$36.6 mil).

Total number of containers handled as of May 2019 was 57,509 which is 6% lower compared to last year May 2018 total. **Compared to May of FY16 the number of containers handled decreased by 17%.**

OPERATING EXPENSES:

Total Operating Expenses as of May 2018 was \$29.6 million, which is 13% lower than Budget (\$33.9 mil) and 2% higher than last year's total operating expenses (\$28.9 mil). For the 8 months of FY19, expenses over a million are: Salaries - \$13.7, Benefits & Other Personnel Costs - \$5.6, General Insurance - \$1.8 and Depreciation \$4.1.



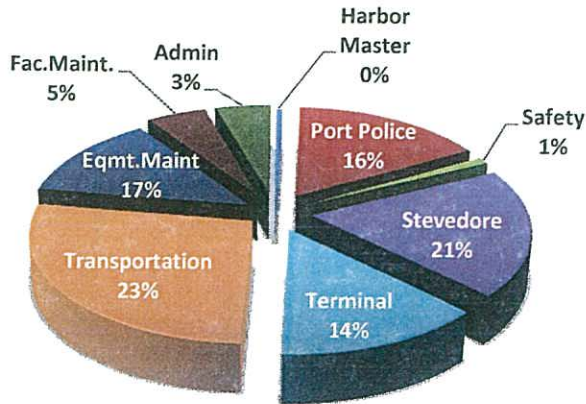
OVERTIME EXPENSE AND DIRECT LABOR REVENUE:

Total Overtime as of May was \$738 thousand which is 7% higher than last year May (\$691K). Direct Labor Revenue as of May was \$1.3 mil, which is .1% higher than last year and 8% higher than budget. Direct Labor charges are for services performed by Port employees under special service request and differentials under the throughput service.

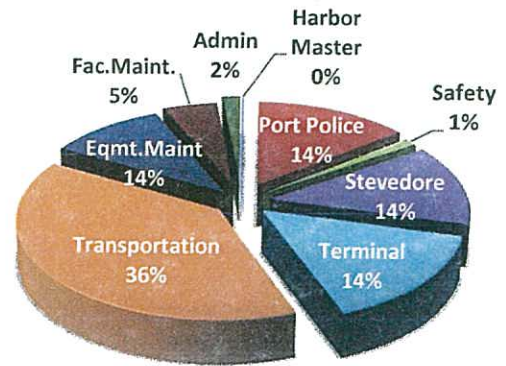
Below is the breakdown of overtime for each division/section for FY19 and FY18 as of May:

Section	FY19	FY18	Budget	DL Revenue
Harbor Master	6,476	3,817	4,664	99,552
Port Police	189,519	166,457	200,000	57,499
Safety	14,184	11,745	6,664	
Stevedore-Cargo Handling	241,034	158,627	160,000	438,218
-Rigger	6,210	2,872	6,664	923,547
Terminal	166,515	169,476	192,000	396,985
Transportation-Superintendent	53,643	53,930	54,000	
-Crane Operator	204	101,583	100,432	67,303
-Equipt Operator	201,186	251,253	267,336	372,705
-Dispatcher	15,183	17,049	20,000	0
Maint.-Crane Maint.	84,253	72,646	76,664	0
-Preventive Maint.	59,811	44,046	50,000	443
-Fleet Maint.	5,599	0	6,664	0
-Welders	46,205	42,023	33,336	119
Facility Maint.-Building	13,323	7,899	10,000	210
-Janitorial	3,102	2,597	3,336	0
-Elect./Refr.	39,701	44,512	40,000	4,014
Administration	962	0	0	
Finance	1,996	14,202	13,336	3,549
Human Resources	2,855	953	2,000	0
Engineering	8,937	0	20,000	0
Procurement	0	0	2,000	0
Information Technology	16,063	2,802	23,336	0
TOTAL	1,176,959	1,168,490	1,292,432	2,364,144

FY19 OT



FY18 OT



Year to date Operating Revenues minus the Year to date Operating Expenses resulted to an Operating Income of \$8.1 mil as of May 31, 2019.

Non-Operating Revenues and Expenses consist of the following: \$2.0 mil -Retirement contribution for COLA, Supplemental and Medical/Dental/Life Insurance expenses, \$1.2 mil Interest Income, \$1.8 mil Interest Expense, \$158 thousand in Federal Expense, \$393 thousand in Federal Reimbursements, \$38 thousand in Loss in Asset Disposal and \$29 thousand in other expenses. The net total of non-operating expenses and revenues as of May is a negative \$2.3 mil.

The Total Net Income as of May is \$5.8 mil.

Accounts Receivable Trade (net) as of May 31, 2019 was \$7.9 million.

Aging Status is a follows: 82% - Current, 11% - over 30 days, 0.3% - over 60 days, 4.2% - over 90 days and 3.1% - over 120 days.

Accounts Payable Trade as of May 31, 2019 is \$747 thousand which is 58% lower than last year's ending balance of \$1.8 million.

Port Authority of Guam
Income Statement
With Budget Comparison (Unaudited)
8 Months Ending 05/31/19

Current Month	Actual	%	Last Year	Actual	%	Budget	Chng		Year to Date	Actual	%	Last Year to Date	Actual	%	Chng	Budget	Chng
OPERATING REVENUES																	
CARGO THROUGHPUT REVENUES																	
1,713,234		34.7%	1,753,881		37.4%	1,610,211	6%	CT-CHASSIS	13,401,059.91		35.5%	12,440,242		34.0%	7.7%	12,881,688	4%
213,224		4.3%	217,098		4.6%	198,376	7%	CT-GROUND	1,616,730.23		4.3%	1,532,622		4.2%	5.5%	1,587,008	2%
108,878		2.2%	114,775		2.4%	105,427	3%	CT-BREAKBULK	1,275,904.75		3.4%	819,355		2.2%	55.7%	843,416	51%
2,394		0.0%	2,669		0.1%	1,808	32%	CT-UNITIZED	13,905.46		0.0%	14,378		0.0%	-3.3%	14,464	-4%
								CT-TUNA									
86,361		1.8%	14,889		0.3%	46,478	86%	CT-RO/RO	410,894.90		1.1%	338,823		0.9%	21.3%	371,824	11%
9,484		0.2%	5,843		0.1%	8,022	18%	CT-STUFFING/DEVAN	71,867.07		0.2%	62,983		0.2%	14.1%	64,176	12%
6,108		0.1%	2,273		0.0%	2,897	111%	CT-HEAVYLIFT	63,332.90		0.2%	22,580		0.1%	180.5%	23,176	173%
23		0.0%	76		0.0%	148	-85%	CT-LONGLENGTH	6,003.63		0.0%	1,019		0.0%	489.2%	1,184	407%
13,072		0.3%	14,883		0.3%	12,049	8%	OUT-OF-GAUGE CARGO (OOG)	101,700.16		0.3%	93,869		0.3%	8.3%	96,392	6%
2,152,779		43.7%	2,126,385		45.4%	1,985,416	8%	CARGO THROUGHPUT REVENUES	16,961,399		44.9%	15,325,871		41.9%	10.7%	15,883,328	7%
OTHER CARGO RELATED REVENUES																	
		0.0%			0.0%		0%	LIFT ON/LIFT OFF			0.0%			0.0%	0.0%		0%
		0.0%			0.0%		0%	PRESLUNG			0.0%			0.0%	0.0%		0%
187,672.69		3.8%	249,241		5.3%	284,662	-29%	TRANSSHIP CONTAINERS	1,443,889		3.8%	2,087,261		5.7%	-30.8%	2,117,296	-32%
14,786.66		0.3%	12,330		0.3%	26,145	-43%	OVERSTOWED CONTAINERS	250,833		0.7%	218,233		0.6%	14.9%	209,160	20%
335.36		0.0%	83		0.0%	497	-33%	SHIFTED CONTAINERS	2,851		0.0%	4,179		0.0%	-31.8%	3,976	-28%
4,131.12		0.1%	5,210		0.1%	3,915	6%	REEFER CONTAINERS	33,885		0.1%	29,866		0.1%	13.5%	31,320	8%
11,853.84		0.2%	13,198		0.3%	11,593	2%	REEFER CNTR-PLUG/UNPLUG	89,117		0.2%	90,522		0.2%	-1.6%	92,744	-4%
254,444.13		5.2%	245,706		5.2%	304,027	-16%	DIRECT LABOR BILLED	2,306,646		6.1%	2,444,067		6.7%	-5.6%	2,432,216	-5%
26,066.63		0.5%	19,176		0.4%	21,319	22%	EQUIPMENT RENTAL	191,754		0.5%	171,141		0.5%	12.0%	170,552	12%
51,383.21		1.0%	29,054		0.6%	47,678	8%	PORT FEES & DOCKAGE	369,325		1.0%	371,212		1.0%	-0.5%	381,424	-3%
507,770.28		10.3%	488,878		10.4%	471,784	8%	WHARFAGE	3,967,616		10.5%	3,655,771		10.0%	8.5%	3,774,272	5%
60,187.53		1.2%	63,938		1.4%	61,813	-3%	FUEL SURCHARGE	470,861		1.2%	480,477		1.3%	-2.0%	494,504	-5%
19,714		0.4%	18,203		0.4%	19,134	3%	MARITIME SECURITY FEE	150,233		0.4%	149,164		0.4%	0.7%	153,072	-2%
159,822		3.2%	159,513		3.4%	161,466	-1%	FACILITY MAINTENANCE FEE	1,271,752		3.4%	1,254,524		3.4%	1.4%	1,291,728	-2%
506,887		10.3%	547,513		11.7%	502,334	1%	CRANE SURCHARGE	3,982,123		10.5%	4,020,461		11.0%	-1.0%	4,018,672	-1%
1,805,054		36.6%	1,852,042		39.5%	1,896,367	-5%	OTHER CARGO RELATED REVENUES	14,530,884		38.5%	14,976,877		40.9%	-3.0%	15,170,936	-4%
3,957,833		80.3%	3,978,427		84.9%	3,881,783	2%	OPERATING REVENUES	31,492,283		83.4%	30,302,748		82.8%	3.9%	31,054,264	1%

Port Authority of Guam
Income Statement (Unaudited)
With Budget Comparison (Unaudited)
8 Months Ending 05/31/19

Current Month	Actual	%	Last Year	Actual	%	Budget	Chng		Year to Date	Actual	%	Last Year to Date	Actual	%	Chng	Budget	Chng	
																		Actual
NON OPERATING REVENUES																		
FACILITIES																		
156,674	3.2%	92,098	2.0%	111,564	40%	801,274	2.1%	FACILITIES USAGE MOBIL	1,677,330	4.4%	837,697	2.3%	1,817,960	-4.3%	892,512	-10%		
386,981	7.8%	229,878	4.9%	227,245	70%	1,677,330	4.4%	FACILITIES USAGE TRISTAR	88,560	0.2%	1,800,471	4.9%	76,216	-6.8%	1,817,960	-8%		
29,520	0.6%	29,220	0.6%	9,527	210%	835,761	2.2%	FACILITIES USAGE-CEMENT THRUPUT	703,503	1.9%	56,520	0.2%	810,568	3%	810,568	3%		
107,588	2.2%	97,107	2.1%	101,321	6%	29,890	0.1%	FACILITIES LEASE INCOME	31,781	0.1%	711,837	1.9%	710,912	-1%	710,912	-1%		
87,938	1.8%	87,938	1.9%	88,864	-1%	184,012	0.5%	FACILITIES COMMON AREA MAINTENANCE FEE	28,233	0.1%	37,192	0.1%	37,168	-1%	37,168	-20%		
3,610	0.1%	4,621	0.1%	4,646	-22%	2,845	0.0%	FACILITIES SECURITY SURCHARGE RENTAL	184,012	0.5%	32,214	0.1%	32,096	-1%	32,096	-1%		
4,182	0.1%	3,520	0.1%	4,012	4%	2,845	0.0%	WATER & LANDSLIDE ACTIVITIES	28,233	0.1%	4,740	0.0%	4,504	-37%	4,504	-37%		
470	0.0%	865	0.0%	563	-17%	184,012	0.5%	MARINA REVENUES	164,280	0.4%	164,280	0.4%	162,312	13%	162,312	13%		
23,089	0.5%	18,208	0.4%	20,289	14%	23,290	0.1%	HARBOR OF REFUGE	23,290	0.1%	23,290	0.1%	23,280	21%	23,280	21%		
3,078	0.1%	3,300	0.1%	2,910	6%	1,685,420	4.5%	DEMURRAGE	1,685,420	4.5%	1,634,710	4.5%	1,551,176	9%	1,551,176	9%		
131,192	2.7%	125,971	2.7%	193,897	-32%	6,068,609	16.1%	FACILITIES	6,068,609	16.1%	6,110,888	16.7%	6,118,704	-0.7%	6,118,704	-1%		
934,323	18.9%	692,726	14.8%	764,838	22%	184,174	0.5%	OTHER FEES & SERVICES	184,174	0.5%	160,877	0.4%	156,952	14.5%	156,952	17%		
OTHER FEES & SERVICES																		
0.0%	0.0%	0.0%	0.0%	0.0%	0%	38,366	0.1%	CLAIMS FEE	38,366	0.1%	16,274	0.0%	920	-100%	920	-100%		
0.0%	0.0%	0.0%	0.0%	0.0%	0%	15,126	0.0%	BULK SCRAP	15,126	0.0%	19,798	0.0%	14,464	165%	14,464	165%		
8,236	0.2%	543	0.0%	1,808	0%	109,639	0.3%	MATERIAL USED	109,639	0.3%	99,306	0.3%	18,632	-24%	18,632	-19%		
1,994	0.0%	543	0.0%	2,329	-100%	21,043	0.1%	PASSENGER SERVICE	21,043	0.1%	25,112	0.1%	122,936	10.4%	122,936	-11%		
17,484	0.4%	12,945	0.3%	15,367	-46%	184,174	0.5%	BUNKER	184,174	0.5%	160,877	0.4%	156,952	14.5%	156,952	17%		
2,502	0.1%	3,336	0.1%	15,367	0%	9,403	0.0%	SPECIAL SERVICES	9,403	0.0%	1,693	0.0%	1,576	455.5%	1,576	497%		
30,216	0.1%	16,823	0.4%	19,619	-87%	184,174	0.5%	ELECTRICAL POWER	184,174	0.5%	160,877	0.4%	156,952	14.5%	156,952	17%		
8,555	0.6%	285	0.0%	197	15238%	9,403	0.0%	OTHER FEES & SERVICES	9,403	0.0%	1,693	0.0%	1,576	455.5%	1,576	497%		
ADMINISTRATIVE FEES & SERVICES																		
REIMBURSEMENTS																		
0.0%	0.0%	0.0%	0.0%	0.0%	0%	34,265	0.1%	FEDERAL REIMBURSEMENT	34,265	0.1%	34,265	0.1%	34,265	0.0%	34,265	0.0%		
0.0%	0.0%	0.0%	0.0%	0.0%	0%	-	0.0%	EARTHQUAKE INSURANCE	-	0.0%	-	0.0%	-	0.0%	-	-		
0.0%	0.0%	0.0%	0.0%	0.0%	0%	-	0.0%	TYHOON INSURANCE	-	0.0%	-	0.0%	-	0.0%	-	-		
0.0%	0.0%	0.0%	0.0%	0.0%	0%	-	0.0%	OTHER REIMBURSEMENT	-	0.0%	-	0.0%	-	0.0%	-	-		
0.0%	0.0%	0.0%	0.0%	0.0%	0%	-	0.0%	REVENUE MINIMUM CHARGE	-	0.0%	-	0.0%	-	0.0%	-	-		
0.0%	0.0%	0.0%	0.0%	0.0%	0%	-	0.0%	REIMBURSEMENTS	-	0.0%	34,265	0.1%	34,265	0.0%	34,265	0.0%		
973,094	19.7%	709,835	15.5%	784,654	24%	6,262,186	16.6%	NON OPERATING REVENUES	6,262,186	16.6%	6,307,723	17.2%	6,277,232	-0.7%	6,277,232	0%		
4,930,927	100.0%	4,888,262	100.0%	4,666,437	6%	37,754,470	100.0%	TOTAL REVENUES	37,754,470	100.0%	36,610,471	100.0%	37,331,496	3.1%	37,331,496	1%		

Port Authority of Guam
Income Statement (Unaudited)
With Budget Comparison (Unaudited)
8 Months Ending 05/31/19

Current Month	Actual	%	Last Year	Actual	%	Budget	%	Chng		Year to Date	Actual	%	Last Year to Date	Actual	%	Chng	Budget	%	
																			Actual
1,731,337	35.1%	1,634,096	34.9%	1,933,197	-10%	13,713,969	36.3%	12,617,520	34.5%	15,465,576	-11%	1,244,000	-21%	1,806,672	2%	#DIV/0!	1,806,672	2%	
130,886	2.7%	126,229	2.7%	128,181	2%	1,002,206	2.7%	933,556	2.5%	1,025,448	-2%	1,896,800	-73%	292,672	-45.8%	-22.5%	292,672	-35%	
466,637	9.4%	463,552	9.9%	498,259	-7%	3,543,771	9.4%	3,446,411	2.8%	3,986,072	-11%	3,336	-28.5%	292,672	-45.8%	-22.5%	292,672	-35%	
141,005	2.9%	140,425	3.0%	4,167	3284%	1,060,954	2.8%	1,005,440	2.7%	33,336	3083%	53,336	-86%	53,336	-86%	-86%	53,336	-86%	
82	0.0%	191	0.0%	6,667	-99%	7,346	0.0%	34,783	0.1%	53,336	-86%	53,336	-86%	53,336	-86%	-86%	53,336	-86%	
11,559	0.2%	13,104	0.3%	23,200	-50%	95,167	0.3%	94,253	0.3%	185,600	-49%	185,600	-49%	185,600	-49%	-49%	185,600	-49%	
123,856	2.5%	143,718	3.1%	155,500	-20%	986,224	2.6%	1,157,097	3.2%	1,244,000	-21%	1,244,000	-21%	1,244,000	-21%	-21%	1,244,000	-21%	
201,557	4.1%	219,029	4.7%	225,834	-11%	1,849,872	4.9%	1,694,804	4.6%	1,806,672	2%	1,806,672	2%	1,806,672	2%	2%	1,806,672	2%	
56,759	1.2%	29,224	0.6%	81,423	#DIV/0!	29,000	0.1%	-	0.1%	-	0.0%	-	0.0%	-	0.0%	-	-	0.0%	
3,155	#REF!	15,433	0.3%	-	0.0%	397,506	1.1%	233,351	0.6%	651,384	70.3%	651,384	70.3%	651,384	70.3%	70.3%	651,384	70.3%	
53,521	1.1%	94,817	2.0%	36,584	-91%	78,535	0.2%	144,961	0.4%	292,672	-73%	292,672	-73%	292,672	-73%	-73%	292,672	-73%	
8,235	0.2%	105,272	2.2%	36,584	-77%	189,040	0.5%	243,816	0.7%	292,672	-50%	292,672	-50%	292,672	-50%	-50%	292,672	-50%	
518,461	10.5%	519,413	11.1%	483,334	7%	4,139,627	11.0%	4,154,739	11.3%	3,866,672	7%	3,866,672	7%	3,866,672	7%	7%	3,866,672	7%	
(499)	0.0%	-	0.0%	6,417	-108%	530	0.0%	500	0.0%	51,336	-99%	51,336	-99%	51,336	-99%	-99%	51,336	-99%	
61,476	1.2%	109,206	2.3%	129,699	-53%	536,839	1.4%	676,526	1.8%	1,037,592	-48%	1,037,592	-48%	1,037,592	-48%	-48%	1,037,592	-48%	
3,819	0.1%	5,651	0.1%	43,405	-91%	45,915	0.1%	175,792	0.5%	347,240	-87%	347,240	-87%	347,240	-87%	-87%	347,240	-87%	
134,212	0.0%	53,226	1.1%	90,322	49%	538,599	1.4%	613,515	1.7%	722,576	-25%	722,576	-25%	722,576	-25%	-25%	722,576	-25%	
97,166	2.7%	368,604	7.9%	236,975	-59%	797,710	2.1%	1,378,143	3.8%	1,896,800	-58%	1,896,800	-58%	1,896,800	-58%	-58%	1,896,800	-58%	
17,622	0.0%	-	0.0%	7,000	-100%	-	0.0%	19,170	0.1%	56,000	-100%	56,000	-100%	56,000	-100%	-100%	56,000	-100%	
28,859	0.4%	160	0.0%	15,625	85%	112,635	0.3%	62,968	0.2%	479,104	-76%	479,104	-76%	479,104	-76%	-76%	479,104	-76%	
25	0.6%	-	0.0%	-	-	113,179	0.3%	59,672	0.2%	125,000	-9%	125,000	-9%	125,000	-9%	-9%	125,000	-9%	
-	0.0%	-	0.0%	-	-	221,302	0.6%	-	0.0%	-	0%	-	0%	-	0%	0%	-	0%	
3,788,729	0.0%	4,048,599	86.4%	4,238,945	-100%	29,607,125	78.4%	28,908,264	79.0%	33,910,760	-13%	33,910,760	-13%	33,910,760	-13%	-13%	33,910,760	-13%	

(1)

INDIRECT COSTS
General & Administrative Expenses

Port Authority of Guam
Income Statement
With Budget Comparison (Unaudited)
8 Months Ending 05/31/19

	Current Month		Last Year		Budget			Year to Date		Last Year to Date			
	Actual	%	Actual	%	Budget	Chng		Actual	%	Actual	%	Chng	Budget
OPERATING INCOME (LOSS)	1,142,198	76.8%	639,693	13.6%	427,592	786%	8,147,345	21.6%	7,702,208	21.0%	5.8%	3,420,736	138%
OTHER INCOME (EXPENSE)													
Other Income & Expense		0.0%		0.0%		0%		0.0%		0.0%	0.0%		-
Other Income		0.0%		0.0%		0%		0.0%		0.0%	0.0%		-
Interest Income		0.0%		0.0%		0%		0.0%		0.0%	0.0%		-
Interest Expense		0.0%		0.0%		0%		0.0%		0.0%	0.0%		-
Interest Income	193,958	3.9%	7,709	0.2%	5,500	3427%	1,239,388	3.3%	(63,984)	-0.2%	-2037.0%	44,000	2717%
Interest Expense	265	0.0%	(84,904)	-1.8%	(36,663)	-100%	(1,780,765)	-4.7%	(697,927)	-1.9%	155.2%	(293,304)	507%
Other Expense	(39,978)	-0.8%	(10,000)	-0.2%	(1,917)	-114%	29,275	0.1%	(9,970)	0.0%	-393.6%	(15,336)	-291%
Claims Settlement	(259,375)	-5.3%	(253,340)	-5.4%	(259,429)	0%	(39,978)	-0.1%	(2,026,564)	-5.5%	-3.7%	(2,075,432)	-6%
Retirement Govt Contribution	106,707	2.2%	38,102	0.8%	222,180	0%	392,799	1.0%	368,383	1.0%	6.6%	1,777,440	0%
Federal Reimbursement	(29,709)	-0.6%	(28,181)	-0.6%	(52,106)	-43%	(158,075)	-0.4%	(165,603)	-0.5%	-4.5%	(416,848)	-62%
Federal Expenses					(4,167)	-100%	(38,401)	-0.1%	(13,187)	0.0%	191.2%	(33,336)	15%
Gain <Loss> on Asset Disposals													
Other Income & Expense	(28,132)	-0.6%	(330,615)	-7.1%	(126,602)	-78%	(2,307,919)	-6.1%	(2,608,852)	-7.1%	-11.5%	(1,012,816)	128%
OTHER INCOME (EXPENSE)	(28,132)	-0.6%	(330,615)	-7.1%	(126,602)	-78%	(2,307,919)	-6.1%	(2,608,852)	-7.1%	-11.5%	(1,012,816)	128%
NET INCOME (LOSS)	1,114,066	22.6%	309,078	6.6%	300,990	270%	5,839,425	15.5%	5,093,356	13.9%	14.6%	2,407,920	143%

	Amount Current	Last Month End	Amount Last Year End	Change This Month	Change This Year
Total Assets					
Current Assets					
Cash on Hand	2,000.00	2,000.00	2,000.00		
Petty Cash Fund	100.00	100.00	100.00		
Cashier Change Fund					
Cash on Hand	2,100.00	2,100.00	2,100.00		
Incentive Award Fund					
First Hawaiian Bank-Incentive					
Incentive Award Fund					
Cash in Bank					
First Hawaiian Bank	63,873,968.47	64,566,192.61	61,151,016.86	692,224.14	2,722,951.61
Bank of Guam	1,213,077.41	2,107,449.02	2,738,546.41	894,371.61	1,525,469.00
Bank of Hawaii					
Citizen Security Bank	65,087,045.88	66,673,641.63	63,889,563.27	1,586,595.75	1,197,482.61
Cash in Bank					
Cash in Bank-Trust					
Trust-Current Unrestricted	12,967,337.79	12,864,308.24	8,748,966.83	103,029.55	4,218,370.95
BOG-Current Restricted	5,540,362.04	5,332,745.22	5,408,157.82	207,816.82	132,204.82
Cash in Bank-Trust	18,507,699.83	18,197,053.46	14,157,124.05	310,646.37	4,350,575.78
Short Term Investments					
Bank of Guam	4,526,464.50	4,625,102.87	9,468,779.00	98,638.37	4,942,314.50
Citizen's Security Bank					
First Hawaiian Bank					
BankPacIFIC					
CitiBank					
Bank of Hawaii					
Oceanic Bank					
Gov Guam Employees Fed CU					
Short Term Investments					
Account Receivable-Trade (Net)	4,526,464.50	4,625,102.87	9,468,779.00	98,638.37	4,942,314.50
Accounts Receivable-Trade	7,934,298.11	6,322,946.82	5,089,858.97	1,611,351.29	2,844,439.14
Accounts Receivable-Trade	296,209.98	296,209.98	296,468.83		258.85
Accounts Receivable-Trade					
Accounts Receivable-Trade (Net)	7,638,088.13	6,026,736.84	4,793,390.14	1,611,351.29	2,844,697.99
Accounts Receivable-Other					
Accounts Receivable-Other					
Accounts Receivable-Other	215.83	49.14	1,843.84	166.69	1,628.01
Accounts Receivable-Other					
Accounts Receivable-Other					
Accounts Receivable-Other					
Accounts Receivable-Other					
Accounts Receivable-Other	529,026.61	529,026.61	655,129.39		126,102.78

	Amount Current	Last Month End Amount	Last Year End Amount	Change This Month	Change This Year
Accounts Receivable-Other	529,242.44	529,075.75	656,973.23	166.69	127,730.79-
Marina Receivables	7,933.62	6,783.62	9,218.12	1,150.00	1,284.50-
Accounts Receivable-Dept. Marina	1,525.44	2,000.44	2,769.67	405.00-	1,174.23-
Accounts Receivable-Gen. Marina	1,030.00	600.00	2,046.50	450.00	996.50-
Accounts Receivable-Harbor of	10,579.06	9,384.06	14,034.29	1,195.00	3,455.23-
Interest Receivables					
Bank of Guam					
Bank Of Hawaii					
BankPacific					
CitiBank					
Citizens Security Bank					
First Hawaiian Bank					
GovGuam Bmp. Red. Credit Union					
Oceanic Bank					
Other					
Interest Receivables					
Prepaid Expenses	763,602.15	968,159.94	58,055.50	201,556.79-	763,602.15
Prepaid Insurance	461,880.18	568,319.17	58,055.50	106,438.99-	403,824.68
Prepaid Expenses	1,225,482.33	1,533,476.11	58,055.50	307,993.78-	1,167,426.83
Deferred Expenses					
Deferred Geda Addendum I/Lease					
Credit Note Reimbursement					
Deferred Expenses					
Current Assets	97,526,702.17	97,596,570.72	93,040,019.48	69,868.55-	4,486,682.69
Non Current Assets					
Long Term Receivable	2,258,190.48	2,258,190.48	2,258,190.48		
Long Term Receivable-DOA	1,490,449.90	1,490,449.90	1,490,449.90		
Long Term Receivable-Geda	3,748,640.38	3,748,640.38	3,748,640.38		
Allow for Uncollectible ITR A/R					
Long Term Receivable					
Revenue Bond Reserves	4,009,922.42	3,948,637.18	3,518,079.07	61,285.24	491,843.35
Reserve w/Trustee-Unrestricted	15,890,711.67	15,890,711.67	15,890,711.67		
Revenue Bond Reserves	19,900,634.09	19,839,348.85	19,408,790.74	61,285.24	491,843.35
Inventory-A/C	8,690.00	8,690.00	8,690.00		
Inventory-Computer	65,748.96	65,748.96	101,434.17	19.62-	36,018.48-
Gas, Oil and Diesel Inventory	99,952.66	99,952.66	99,952.66		698.19
Inventory-Parts	507,098.98	506,715.92	512,276.76	383.06	5,177.78-
Supplies Inventory					

	Amount Current	Last Month End	Last Year End	Change This Month	Change This Year
Contra-Asset Inventory Adj Allowance for Obsolescence Inventory for Survey	1,721.09 87,549.04	1,721.09 87,549.04	1,721.09 87,549.04		
Inventory	592,645.25	592,281.81	633,143.32	363.44	40,498.07
Work In Progress	3,242,269.62 2,298,491.63	2,421,269.62 1,992,480.07	67,360.29 2,651,780.64	241,276.37 304,010.96	174,909.33 2,124,407.81
Const Work in Progr-Federal Const Work in Progr-BOND	5,927,267.70	5,381,980.37	2,903,204.98	545,287.33	3,024,062.72
Non Current Assets	26,420,547.04	25,813,611.03	22,945,139.04	606,936.01	3,475,408.00
Property, Plant & Equipment	3,563,000.00	3,563,000.00	3,563,000.00		
Land	3,563,000.00	3,563,000.00	3,563,000.00		
Buildings	15,732,648.10	15,732,648.10	15,732,648.10		
Buildings-Original	125,548,911.67	125,548,911.67	125,548,911.67		
Buildings-Substation Shelters	141,281,559.77	141,281,559.77	141,281,559.77		
Buildings-Wharf Improvements	15,244,401.29	15,242,416.44	15,228,522.49	1,984.85	15,878.80
Canopy Structures	35,626,667.41	35,338,690.42	33,320,334.63	287,976.99	2,306,332.78
Buildings	50,871,068.70	50,581,106.86	48,548,857.12	289,961.84	2,322,211.58
Accumulated Depreciation-Build	531,281.08	531,281.08	528,231.08		3,050.00
AccDeprec-Buildings-Original	6,097,298.34	6,097,298.34	6,075,435.13		21,863.02
AccDeprec-Buildings-Sub Shelter	15,926,684.91	15,926,684.91	15,964,110.56		37,425.65
AccDeprec-Buildings-Wharf Impr	1,183,716.16	1,183,716.16	1,149,873.30		33,842.86
AccDeprec-Canopy Structures	1,821,145.00	1,821,145.00	1,821,145.00		
Furnishings & Equipment	1,229,056.25	1,229,056.25	1,229,056.25		
Air Tools	14,832.85	14,832.85	14,832.85		
Communications Equip	6,999.00	6,999.00	6,999.00		
Computer Equip	2,999.00	2,999.00	2,999.00		
Crane Equip	1,729,408.84	1,729,408.84	1,836,399.00		106,986.99
Furnishings & Office Equip	229,446.84	229,446.84	244,446.84		
Forklift Equip	329,446.84	329,446.84	329,446.84		
Generator Sets	329,446.84	329,446.84	329,446.84		
Hand Tools	329,446.84	329,446.84	329,446.84		
Motor & Unload Equip	329,446.84	329,446.84	329,446.84		
Other Equip	329,446.84	329,446.84	329,446.84		
Power Tool	329,446.84	329,446.84	329,446.84		
Safety Equip	329,446.84	329,446.84	329,446.84		
Shop Equip	329,446.84	329,446.84	329,446.84		
Tractors	2,970,216.97	2,970,216.97	2,970,216.97		12,695.79

	Amount Current	Last Month End	Amount Last Year End	Change This Month	Change This Year
Vehicles & Motor Equip	2,117,302.69	2,117,302.69	1,986,984.87	130,317.82	130,317.82
Furnishings & Equipment	34,031,076.68	34,031,076.68	33,999,111.41	31,965.27	31,965.27
Accumulated Depreciation-Furni	501,445.14	500,714.68	495,601.46	730.46	5,843.68
AccDeprec-Air Toolsets	1,534,678.04	1,534,235.66	1,513,782.85	20,442.38	279,740.24
AccDeprec-Communications Eqt.	7,727,375.02	7,717,961.02	6,257,882.85	1,459,479.20	779,763.00
AccDeprec-Crane Equip	943,404.82	934,293.54	870,574.86	64,118.94	75,890.24
AccDeprec-Forklift Equip	344,680.30	337,852.22	290,055.66	47,836.56	54,624.64
AccDeprec-Generator Sets	11,368.57	11,277.94	10,643.53	834.61	725.04
AccDeprec-Load & Unload Equip	1,927.03	1,903.26	1,736.87	166.19	190.16
AccDeprec-Mowing Equip	6,065.80	5,949.15	5,132.60	816.55	933.20
AccDeprec-Other Equip	1,165,301.55	1,154,636.65	1,204,413.75	(139,077.10)	39,112.20
AccDeprec-Power Tools	12,954.64	12,713.80	11,027.92	1,685.88	1,926.72
AccDeprec-Safety Equip	10,299.44	9,830.06	6,544.40	3,285.66	3,755.04
AccDeprec-Shop Equip	204,244.12	201,830.75	198,790.19	3,039.56	4,450.93
AccDeprec-Ratons	1,582,448.82	1,569,296.97	1,414,233.94	144,952.93	177,214.80
AccDeprec-Vehicles & Motor Equ	1,082,520.46	1,061,625.38	929,733.94	152,886.44	155,787.12
Accumulated Depreciation-Furni	16,090,751.97	15,862,252.39	14,501,748.13	228,499.58	1,589,003.84
Capital Leases					
Capital Leases					
Capital Leases					
Accumulated Amortization-Capit					
Accumort-Capital Leases					
Accumulated Amortization-Capit					
Deferred Long Term Asset Cost					
Def. Cost-2018 Bond COI					
Deferred Long Term Asset Cost					
Pension-Deferred Outflows Res	6,176,941.00	6,176,941.00	6,176,941.00		
Pension-Deferred Outflow Res	6,176,941.00	6,176,941.00	6,176,941.00		
Pension-Deferred Outflows Res	118,090,756.78	118,609,218.20	121,970,006.93	(518,461.42)	3,879,250.15
Property, Plant & Equipment	242,038,005.99	242,019,399.95	237,955,165.45	18,606.04	4,082,840.54
Total Assets					
Total Liabilities & Capital					
Current Liabilities					
Accounts Payable					
Accounts Payable Custom					
Accounts Payable GSA					

	Amount Current	Amount Last Month End	Amount Last Year End	Change This Month	Change This Year
Accounts Payable Others	46,936.33	46,936.33	374,284.52	390,014.99-	327,348.19-
Accounts Payable Trade	747,453.83	1,137,468.82	1,788,592.56	390,014.99-	1,041,438.67-
Received Not Vouchered					
Accounts Payable	794,390.16	1,184,405.15	2,163,177.02	390,014.99-	1,368,786.86-
Current Loan/Bond Payable					
Current ANZ (USDA) Loan Payable		3,178.71-	3,178.71-	3,178.71	3,178.71
Current ANZ (USDA) 12M Loan Payable					
CU ANZ 10M USDR Loan Payable					
CU BOG 2M USDR Direct Loan		3,178.71	3,178.71	3,178.71-	3,178.71-
CU Bond Payable					
Current Loan/Bond Payable					
Due to Public Utilities					
Due to GPA					
Due to GTR					
Due to GWA					
Due to Public Utilities					
Accrued Interest Payable	1,013,064.11	1,013,064.11	811,840.80		201,223.31
Accrued Interest Payable	1,013,064.11	1,013,064.11	811,840.80		201,223.31
Accrued Bond Interest Payable					
Deferred Revenues	61,769.01-	61,769.01-	61,769.01-		131,460.17-
Deferred Revenues-DOD Moderniz	105,718.75	105,718.75	237,178.92		10,586.91-
Deferred Income - GDDA			10,586.91		90,550.53-
Deferred Revenues -Leases			90,550.53		232,597.61-
Deferred Revenues Marinas					
Deferred Revenues	43,949.74	43,949.74	276,547.35		
Deferred Revenues					
Accrued Expenses	302,278.61	241,942.39	809,757.71	549,663.78-	417,478.10-
Accrued Vacation Pay-Current	1,500,595.24	1,448,036.61	1,267,947.10	52,558.63-	232,648.14
Accrued Vacation pay					
Accrued Earthquake Cost					
Accrued Cola/Supplemental					
Accrued Typhoon Cost					
Accrued Medicare Tax					
Accrued Federal Grant					
Employee Insurance Payables	20,297.66	20,297.66	15,896.42	208,340.12-	4,401.24
Employee Deductions Payable	185,234.71	393,574.83	318,280.16		133,045.45-
Withholding Tax Payable					
Credit Union					
Accrued Miscellaneous Deductio					
Accrued Death & Disability Ins					
Deferred Contributions					
Deferred Compensation Plan Pay					
Deferred Supplemental Plan					

	Amount Current	Last Month End	Amount End Last Year	Change This Month	Change This Year
Accrued Expenses	2,098,406.22	2,803,851.49	2,411,881.39	705,445.27-	313,475.17-
Security Deposits	85,831.20	85,831.20	84,565.82		1,265.38
Security Deposits - Space Leas	32,347.82	32,347.82	32,421.82		74.00-
Security Deposits - Marinas	118,179.02	118,179.02	116,987.64		1,191.38
Capital Lease Obligations- Cur					
Capital Lease Obligations- Cur					
Other Current Liabilities					
Reserve Shortage/Property Dama					
Lease Payable - GEDA					
Other Current Liabilities					
Current Liabilities	4,067,989.25	5,163,449.51	5,780,434.20	1,095,460.26-	1,712,444.95-
Non Current Liabilities					
Long Term Accrued Expenses	56,767,410.00	56,767,410.00	56,767,410.00		
Unfunded Retirement Contributions	552,540.11	552,540.11	552,540.11		
Accrued Vacation Pay-Long Term	993,730.72	993,730.72	993,730.72		
Accrued Sick Pay (DC) -Long Term					
Contingent Liability					
Long Term Accrued Expenses	58,313,680.83	58,313,680.83	58,313,680.83		
Pension-Deferred Inflow of Res	1,008,960.00	1,008,960.00	1,008,960.00		
Pension-Deferred Inflow of Res	1,008,960.00	1,008,960.00	1,008,960.00		
Capital Lease Obligations-					
Capital Lease Obligations					
Capital Lease Obligations					
Long Term Loan Payables					
LT-ANZ (USDA) Loan Payable 3.5					
LT-ANZ (USDA) Loan Payable 1.2M					
LT-BOG SIF Loan Payable 10M					
LT-BOG \$2M USDA Direct Loan					
Long Term Bond Payables					
LT-2018 BOND Payable	71,445,000.00	71,445,000.00	71,445,000.00		
LT-2018 BOND Payable Issuance	5,208,474.61	5,208,474.61	5,252,614.23		44,139.62-
LT-2018 BOND Premium	76,653,474.61	76,653,474.61	76,697,614.23		44,139.62-

	Amount Current	Last Month End	Last Year End	Change This Month	Change This Year
Non Current Liabilities	135,976,115.44	135,976,115.44	136,020,255.06		44,139.62-
Capital Contributions & Equity					
Contributions-Local Government	3,563,000.00	3,563,000.00	3,563,000.00		
Contributions-Land	13,483,688.19	13,483,688.19	13,483,688.19		
Contributions-Property & Equip	109,000.00	109,000.00	109,000.00		
Contributions-General Fund	7,000.00	7,000.00	7,000.00		
Contributions-SEA (Portion of					
Contributions-Local Government	17,567,358.64	17,567,358.64	17,567,358.64		
Contributions-Federal Governme	10,321,126.26	10,321,126.26	10,321,126.26		
Contributions-U.S. Govt Rehab	1,492,676.57	1,492,676.57	1,492,676.57		
Contributions-Economic Develop	6,508,875.60	6,508,875.60	6,508,875.60		
Contributions-U.S. Department	53,763.30	53,763.30	53,763.30		
Contributions-U.S. Govt-Pema					
Contributions-Federal Governme	18,376,441.73	18,376,441.73	18,376,441.73		
Accumulated Earnings	33,770,010.75-	33,770,010.75-	33,770,010.75-		
Accumulated Earnings (Deficit)	93,980,681.57	93,980,681.57	93,980,681.57		
Accumulated Earnings	60,210,670.82	60,210,670.82	60,210,670.82		
Net Earnings (Loss)	5,839,430.11	4,725,363.81	5.00	1,114,066.30	5,839,425.11
Capital Contributions & Equity	101,993,901.30	100,879,835.00	96,154,476.19	1,114,066.30	5,839,425.11
Total Liabilities & Capital	242,038,005.99	242,019,399.95	237,955,165.45	18,606.04	4,082,840.54

PORT AUTHORITY OF GUAM

AGING AS OF 05/31/2019

Number	Name	Open	Current	31 - 60	61 - 90	91 - 120	Over 120	Amount	Date	Remarks
15388	Guam Industrial Serv. Inc.	\$ 224,614.94	\$ 4,949.15	\$ 14,275.14	\$ 14,031.74	\$ 21,171.49	\$ 170,187.42	\$ 23,520.00	9/26/2018	Management working on settlement
7384	Marianas Steamship Agency	\$ 385,073.09	\$ 338,716.63	\$ 8,027.38			\$ 38,329.08	\$ 224,143.57	6/18/2019	Invoice #7384 remains in dispute (Guam Industrial/Guam Shipyard)
11776	Customs and Quarantine Age	\$ 13,029.12		\$ 449.28			\$ 12,579.84	\$ 898.56	5/15/2019	Govt claim was filed on 06/11/2019. May take up to 6 months.
7106	Shell Guam, Inc.	\$ 15,600.00		\$ 1,950.00	\$ 1,950.00	\$ 1,950.00	\$ 9,750.00	\$ 1,950.00	11/4/2011	Pending assignment
9620	Alupang Beach Club	\$ 6,290.58	\$ 99.78				\$ 6,190.80	\$ 287.51	6/20/2019	A Denial letter in regards to dispute for water charges is being processed
11794	Guam Shipyard	\$ 3,345.84	\$ 145.86	\$ 191.86		\$ 74.34	\$ 2,933.78	\$ 33.98	5/1/2019	Management working on settlement
14482	Quinata, John M.	\$ 2,200.00	\$ 220.00	\$ 220.00		\$ 440.00	\$ 1,320.00	\$ 412.50	12/19/2016	Notice to vacate was placed on customer's vessel. Will proceed with Small Claims
15708	HMR Guam Inc.	\$ 1,227.24					\$ 1,227.24			Small Claims
7376	Matson Navigation Inc.	\$ 4,120,456.79	\$ 3,576,645.19	\$ 235,002.95		\$ 307,759.40	\$ 1,049.25	\$ 46,483.28	6/19/2019	Copy of Invoice was emailed to Geri, will follow up on Status
9814	Fentress, Michael D.	\$ 710.98					\$ 710.98	\$ 200.00	4/30/2019	Ms. Fentress is no longer utilizing slip, past due balance is from previous year. She has made an agreement to pay \$200.00 a month to clear past due balance
13202	Department of Administrati	\$ 553.20	(30.00)				\$ 583.20	\$ 4,645.40	11/16/2018	Following up with DOA
15095	Chen, Steven	\$ 2,762.28	\$ 547.50	\$ 547.50	\$ 24.78	\$ 1,095.00	\$ 547.50	\$ 3,309.78	6/19/2019	Mr. Chen Cleared full balance with personal account, will follow up with status on payment for Business account (Shot guns)
14923	Shotguns	\$ 1,700.00	\$ 340.00	\$ 340.00		\$ 680.00	\$ 340.00	\$ 1,207.50	1/20/2017	Recommendation for Write Off
15663	Okeanos Marianas	\$ 250.00					\$ 250.00	\$ 50.00	11/13/2018	
15807	Romero, Nicole R.	\$ 24.78					\$ 24.78	\$ 269.30	6/17/2019	Final Notice was sent to customer.
14143	Salt Shaker Yacht Charter	\$ 24.04					\$ 24.04	\$ 140.00	6/17/2019	Mr. Castro has been making frequent payments to clear past due balance
14963	Castro, Jesse AR	\$ 2,072.50	\$ 595.00	\$ 645.00	\$ 125.00	\$ 707.50		\$ 140.00	6/17/2019	Final Notice & Small Claims Referral will be processed and sent out
13604	Lewis, Erik C.	\$ 850.00	\$ 150.00	\$ 150.00		\$ 550.00		\$ 325.00	1/29/2013	Final Notice will be sent to customer
15699	Shut Up and Fish Guam	\$ 425.00	\$ 75.00	\$ 175.00		\$ 175.00		\$ 687.50	2/20/2019	Shut up Fish is due for a credit, due to termination of a slip. After credit is processed customer will pay remaining outstanding balance
10778	Real World Diving	\$ 1,492.83	\$ 214.84	\$ 676.87	\$ 511.56	\$ 89.56		\$ 1,979.61	6/17/2019	Account is up to date
14527	UMS Heavy Equipment Rental	\$ 874.45		\$ 411.60	\$ 423.78	\$ 39.07		\$ 823.20	3/21/2019	2nd Notice will be sent to customer
15079	McDermott, Brian	\$ 113.69			\$ 82.37	\$ 31.32		\$ 790.55	1/18/2019	Final Notice will be sent to customer
7886	Guam Transport & Warehouse	\$ 16.82				\$ 16.82		\$ 588.00	6/18/2019	Account is up to date
13121	Tidewater Distributors Inc	\$ 731.12	\$ 720.60			\$ 10.52		\$ 5,535.39	6/13/2019	Final Notice will be sent to customer
7341	Amblyth Shipping & Trading	\$ 405,681.82	\$ 323,678.07	\$ 77,570.83	\$ 4,432.92			\$ 106,098.60	6/14/2019	Amblyth has been making frequent payments to clear past due
14061	AR Sunriser Canteen/Cateri	\$ 1,387.54		\$ 707.65	\$ 659.89			\$ 1,403.84	6/4/2019	2nd Notice will be sent to customer
15857	Suh, Jimmy P.	\$ 450.00	\$ 237.50		\$ 212.50			\$ 212.50	5/24/2019	2nd Notice will be sent to customer
12518	Balajadia, Robert M.	\$ 49.34	(25.00)		\$ 74.34			\$ 267.54	6/14/2019	Customer disputing water charges. John LG will discuss with Glenn and update me.
14537	Fredrick, Bruce & Dianne	\$ 345.00	\$ 220.00	\$ 75.00	\$ 50.00			\$ 565.00	6/14/2019	Account is up to date
7587	American President Lines L	\$ 2,222,013.32	\$ 1,735,370.60	\$ 486,644.72				\$ 918,880.59	6/20/2019	APL has been making frequent payments, and has cleared all invoices over 61 days past due
14444	Office of the Governor of	\$ 168,609.03	\$ 141,424.23	\$ 27,184.80				\$ 82,825.61	6/12/2019	Account is up to date
15377	Dawan World Wide Inc.	\$	(11,981.06)	\$ 11,981.06				\$ 354.12	4/30/2019	Account is up to date
14381	Apra Dive & Marine Sports,	\$ 1,357.14	\$ 274.40	\$ 1,082.74				\$ 3,000.00	5/31/2019	2nd Notice will be sent to customer
12150	DHX Inc.(dba DGX)	\$	(885.30)	\$ 885.30				\$ 885.30	4/22/2019	Account is up to date
9363	Luen Fung Enterprises	\$	(786.72)	\$ 786.72				\$ 393.36	4/29/2019	Account is up to date
15823	Card, Philip & Arreiza	\$ 550.00	\$ 275.00	\$ 275.00				\$ 275.00	1/24/2019	Customer no longer utilizes slip, credit is due.
9566	Western Sales Trading Co.	\$	(236.08)	\$ 236.08				\$ 236.08	4/23/2019	Account is up to date

Number	Name	Open	Current	31 - 60	61 - 90	91 - 120	Over 120	Amount	Date	Remarks
14161	Isla Trucking	\$ 202.10	\$ 15.37	\$ 186.73				\$ 1,000.00	5/28/2019	2nd Notice will be sent to customer
14534	Martin, Dwight	\$ 300.00	\$ 150.00	\$ 150.00				\$ 4,500.00	2/25/2019	2nd Notice will be sent to customer
13405	Jae Hoon Corp.	\$	\$ (147.55)	\$ 147.55				\$ 196.68	6/5/2019	Account is up to date
7501	Triple J, Ent., Inc.	\$	\$ (118.04)	\$ 118.04				\$ 118.04	4/19/2019	Account is up to date
7350	Consolidated Transportation	\$ 656,163.03	\$ 656,064.69	\$ 98.34				\$ 183,726.18	6/11/2019	late Notice will be sent
14582	Packbier, Paul R./PCH Gu	\$ 190.00	\$ 110.00	\$ 80.00				\$ 810.00	6/20/2019	Customer made a payment to clear outstanding Account currently up to date
15099	Williams, Michael E.	\$ (46.16)	\$ (95.72)	\$ 49.56				\$ 617.40	5/10/2019	late Notice will be sent
14642	Tristar Terminals Guam, In	\$ 377,008.36	\$ 377,008.36					\$ 128,835.26	6/4/2019	
10225	Mobil Oil Guam, Inc.	\$ 138,818.19	\$ 138,818.19					\$ 1,159.08	6/20/2019	
14171	Norton Lilly International	\$ 43,500.89	\$ 43,500.89					\$ 36,441.15	6/20/2019	
14610	U.S. Department of Homeland	\$ 14,010.45	\$ 14,010.45					\$ 14,010.45	6/14/2019	
13696	Lotus Pacifica Trailrig, In	\$ 4,522.25	\$ 4,522.25					\$ 780.00	6/7/2019	
13930	T & J Distributors	\$ 1,573.44	\$ 1,573.44					\$ 158.98	3/19/2014	
8483	Scuba Company	\$ 751.58	\$ 751.58					\$ 1,755.36	5/31/2019	
7763	Guam Dolphin's Marine Spor	\$ 718.62	\$ 718.62					\$ 1,874.53	6/5/2019	
15475	Tropical Island Marine Spo	\$ 481.92	\$ 481.92					\$ 1,139.04	4/30/2019	
15844	SDM Holdings	\$ 420.00	\$ 420.00					\$ 790.00	6/10/2019	
15467	Baird, Austin & Bairda	\$ 378.65	\$ 378.65					\$ 589.09	6/10/2019	
1490	Guam Telephone Authority	\$ 351.52	\$ 351.52					\$ 1,050.00	6/7/2019	
14364	P.S.V. Corp./Joo, Gi Bum	\$ 322.14	\$ 322.14					\$ 1,076.46	6/6/2019	
13044	Smithbridge Guam, Inc.	\$ 260.99	\$ 260.99					\$ 12,703.96	5/29/2019	
9806	Felix, Christopher	\$ 220.00	\$ 220.00					\$ 220.00	6/5/2019	
15698	Poseldon's Maidens Charter	\$ 212.50	\$ 212.50					\$ 212.50	6/17/2019	
15651	Barcelona, Roland/Gerylin	\$ 205.00	\$ 205.00					\$ 420.00	5/17/2019	
15774	Quineta, Jose M.	\$ 187.50	\$ 187.50					\$ 275.00	5/17/2019	
15526	Ovales, Victor	\$ 137.50	\$ 137.50					\$ 137.50	6/3/2019	
15704	Halmi, Anthony Villagomez	\$ 137.50	\$ 137.50					\$ 137.50	3/15/2019	
14485	Rains, Julian T.	\$ 137.00	\$ 137.00					\$ 185.00	4/30/2019	
14124	Poppe, Edward/FISH INC	\$ 80.00	\$ 80.00					\$ 80.00	6/17/2019	
14368	SubCom, LLC	\$ 69.16	\$ 69.16					\$ 13,910.40	6/11/2019	
14431	Quineta, Carlos DBA-Herita	\$ 50.13	\$ 50.13					\$ 777.87	5/30/2019	
14429	Weibacher, Walden	\$ 50.00	\$ 50.00					\$ 235.00	5/31/2019	
15570	1524 Inc./Layla Dolphin Cr	\$ 50.00	\$ 50.00					\$ 890.00	6/11/2019	
13803	Koranda Corp.	\$ 39.26	\$ 39.26					\$ 17.42	6/7/2019	
12509	Hanley, Timothy F.	\$ 25.00	\$ 25.00					\$ 130.00	6/20/2019	
13527	Haft, John R.	\$ 25.00	\$ 25.00					\$ 245.00	6/17/2019	
14436	John C. Agnon/Wyung J. Par	\$ 25.00	\$ 25.00					\$ 300.00	5/24/2019	
14283	Brand, Inc.	\$ 20.82	\$ 20.82					\$ 2,222.00	5/8/2019	
15593	Guam Ocean Adventures, LLC	\$ 19.42	\$ 19.42					\$ 390.54	6/17/2019	
11762	Aqua World, Inc.	\$ 10.65	\$ 10.65					\$ 2,700.00	6/14/2019	
14642	Tristar Terminals Guam, In	\$ (0.01)	\$ (0.01)					\$ 128,835.26	6/4/2019	
15811	Ride the Ducks, LLC	\$ (0.02)	\$ (0.02)					\$ 1,265.38	6/10/2019	
10524	Orcutt, Kenneth D.	\$ (0.50)	\$ (0.50)					\$ 137.50	6/14/2019	
11778	Dewitt Trans Services of G	\$ (0.68)	\$ (0.68)					\$ 55.92	6/10/2019	
12522	Dickerson & Quinn, Ltd	\$ (0.68)	\$ (0.68)					\$ 472.16	5/14/2019	
15798	Edson, Roger	\$ (2.78)	\$ (2.78)					\$ 84.67	6/3/2019	
15859	CRISOSTOMO, BENNY Q.	\$ (5.00)	\$ (5.00)					\$ 5.00	3/8/2019	
14535	Young, Diane & Jerry	\$ (25.00)	\$ (25.00)					\$ 150.00	6/7/2019	
15548	Makania Fishing Charters	\$ (25.00)	\$ (25.00)					\$ 87.50	6/14/2019	
15727	Cosas DI Familia Holdings	\$ (33.65)	\$ (33.65)					\$ 850.00	5/30/2019	
15235	Oil Spill Response Operat	\$ (25.00)	\$ (25.00)					\$ 3,883.06	6/3/2019	
12397	Cruz, John R.	\$ (40.00)	\$ (40.00)					\$ 160.00	8/29/2017	
14387	Guam Sumpsoe Ferry Corp.	\$ (50.00)	\$ (50.00)					\$ 885.20	6/18/2019	
1300	SANTOS, RAYMOND B.	\$ (50.00)	\$ (50.00)					\$ 50.00	5/6/2019	
1456	SANTOS, GILBERT G.	\$ (50.00)	\$ (50.00)					\$ 50.00	5/9/2019	
1741	TORRES, SILVESTRE S.	\$ (50.00)	\$ (50.00)					\$ 30.00	9/1/2017	
1749	CARBULLIDO, RITA B.	\$ (50.00)	\$ (50.00)							

Number	Name	Open	Current	31 - 60	61 - 90	91 - 120	Over 120	Amount	Date	Remarks
13677	Brown, Roy	\$ (220.00)	\$ (220.00)					\$ 174.45	5/17/2019	
13671	Landscape Management System	\$ (236.13)	\$ (236.13)					\$ 10,498.90	2/19/2019	
14633	Eusebio, Ricardo B.	\$ (240.00)	\$ (240.00)					\$ 360.00	3/7/2019	
12394	Wong, Billy	\$ (262.50)	\$ (262.50)					\$ 350.00	6/3/2019	
15428	Stewart, Michael	\$ (275.00)	\$ (275.00)					\$ 825.00	1/15/2019	
9697	Canacho, Antonio Frank C.	\$ (280.00)	\$ (280.00)					\$ 480.00	12/5/2018	
8336	Pacific Trucking Inc.	\$ (292.38)	\$ (292.38)					\$ 59.02	5/13/2019	
11775	Charles Marine Sports Club	\$ (295.10)	\$ (295.10)					\$ 1,003.20	6/5/2019	
14443	Moritz, Lance	\$ (300.00)	\$ (300.00)					\$ 450.00	5/13/2019	
14791	Font, Francis L.	\$ (316.71)	\$ (316.71)					\$ 300.00	3/28/2019	
15031	Asia Pacific Wholesalers	\$ (342.31)	\$ (342.31)					\$ 2,922.00	7/3/2018	
13089	Guam Fisherman's Cooperat	\$ (350.00)	\$ (350.00)					\$ 700.00	5/14/2019	
13545	Perez, Vincent T./Vern Per	\$ (350.00)	\$ (350.00)					\$ 600.00	12/11/2018	
14409	Robinson, Merle Ann	\$ (350.00)	\$ (350.00)					\$ 600.00	4/4/2019	
15205	RIDLON, DANIEL A	\$ (350.00)	\$ (350.00)					\$ 600.00	2/4/2019	
15290	Murrell, Robert Dan	\$ (375.00)	\$ (375.00)					\$ 675.00	2/13/2019	
9849	Flores, William A.	\$ (400.00)	\$ (400.00)					\$ 600.00	1/11/2019	
15207	SOUTH PACIFIC DREAM CORP	\$ (402.50)	\$ (402.50)					\$ 140.00	6/11/2019	
11756	V.Angeo's Trucking	\$ (413.14)	\$ (413.14)					\$ 59.02	6/13/2019	
14141	Core Tech International	\$ (425.15)	\$ (425.15)					\$ 8,415.50	12/31/2018	
15503	Y&Y LLC DBA: Sunny Divers	\$ (440.00)	\$ (440.00)					\$ 840.00	3/1/2019	
15709	Sam, Gerald L.	\$ (440.00)	\$ (440.00)					\$ 440.00	3/20/2019	
14136	San Nicolas, Jose T.	\$ (450.00)	\$ (450.00)					\$ 200.00	6/12/2019	
10621	Perez, Thomas L.G.	\$ (480.00)	\$ (480.00)					\$ 960.00	11/26/2018	
15892	Weisse, Russell	\$ (540.00)	\$ (540.00)					\$ 540.00	5/24/2019	
14210	Kaneshiro, Roger J., D.O.S	\$ (560.00)	\$ (560.00)					\$ 960.00	1/9/2019	
13191	Aguiar, Sonia V. or Paul SN	\$ (579.73)	\$ (579.73)					\$ 120.00	2/1/2019	
8264	Olson, Tom	\$ (600.00)	\$ (600.00)					\$ 750.00	5/8/2019	
9478	Triple B Forwarders	\$ (785.14)	\$ (785.14)					\$ 59.02	6/4/2019	
12748	Radiocom	\$ (849.48)	\$ (849.48)					\$ 1,600.00	1/14/2019	
15152	SUNNY SIDE UP GUAM INC.	\$ (857.50)	\$ (857.50)					\$ 1,305.00	6/11/2019	
1487	Guam Federation of Teacher	\$ (859.00)	\$ (859.00)					\$ 1,950.00	1/3/2019	
15582	Shawers, George Kenneth	\$ (1,137.50)	\$ (1,137.50)					\$ 1,310.00	4/15/2019	
15718	Larsen, Helge	\$ (1,200.00)	\$ (1,200.00)					\$ 525.00	9/26/2018	
10250	Morrica Equipment LLC	\$ (1,241.08)	\$ (1,241.08)					\$ 1,200.00	5/31/2019	
15612	Churchill, Charles D.	\$ (1,281.00)	\$ (1,281.00)					\$ 2,680.00	5/30/2019	
13537	Wang, Jacky	\$ (1,315.00)	\$ (1,315.00)					\$ 178.69	4/24/2019	
13314	Island Certs Corporation	\$ (1,328.69)	\$ (1,328.69)					\$ 582.12	6/7/2019	
9401	Tasol Distributor	\$ (1,428.22)	\$ (1,428.22)					\$ 1,573.44	5/16/2019	
14808	TandJ Distributor	\$ (1,573.44)	\$ (1,573.44)					\$ 403.68	11/6/2018	
7368	Gabras Marine Corp	\$ (23,338.16)	\$ (23,338.16)					\$ 2,714.75	6/7/2019	
15334	KALS Corporation	\$ (25,640.92)	\$ (25,640.92)					\$ 29,742.00	6/20/2019	
13030	South Pacific Petroleum Co	\$ (29,317.22)	\$ (29,317.22)					\$ 172,000.00	3/1/2019	
12511	Hanson Permanente Cement Co	\$ (185,842.44)	\$ (185,842.44)					\$ 5,814.03	6/5/2019	
14778	IP&E Holding LLC	\$ (577,778.55)	\$ (577,778.55)							
	TOTAL	\$ 7,954,367.98	\$ 6,479,630.47	\$ 871,330.70	\$ 22,578.88	\$ 334,790.02	\$ 246,047.91			

Supplier	Supplier Name	Phone	CO	Balance Open	Current	61 - 90	91 - 120	Aging 121 -	Over
10823	Reaction Supply C	671 4725651	00050	2528.50	2528.50				
7093	Safety 1st System	671 6496440DAVE	00050	256.00	256.00				
13030	South Pacific Pet	671 4728871 (OPERA	00050	20608.18	20608.18				
15630	SOURCE RITE INC		00050	885.00	1090.00-				1975.00
15617	Taimanglo, Nathan	671 777-2262	00050	50.00	50.00				50.00
15398	Te'laje, Migue'l T	671 4728337	00050	192.50	192.50				
14217	The T-Factory	671 6496050	00050	4842.69	4842.69				
14642	Triple J. Motors	671 5652300	00050	14446.86	14446.86				
1615	Tsang Brothers Co	671 6388133 (CHRIS	00050	98.40	98.40				
1871	TALTANO, MARIA D.	671 4775931	00050	50.00	50.00				
15422	TOP END, PEST CONT	671 477-0000	00050	400.00	400.00				
11956	WORKERS Compensat		00050	2630.00					2630.00
14197	WSP/Parsons Brinc	671 9884554 (MATTH	00050	37720.14	37720.14				
7253	Xerox Corporation	671 4779456/9495	00050	4354.44	4354.44				
1757	YOSHIDA, ANGELA M	671 8885310	00050	99.95	99.95				
00050	Port Authority of Guam			747453.83	673797.41	2897.47	65622.84		5136.11
	Grand Total			747453.83	673797.41	2897.47	65622.84		5136.11

Port Authority of Guam
Accounts Payable Summary

Supplier Name	Phone	CO	Balance Open	Current	61	90	91	120	Aging	121	Over
		00050	747453.83	673797.41		2897.47		65622.84			5136.11
Grand Total			747453.83	673797.41		2897.47		65622.84			5136.11

Port Authority of Guam
Crane Surcharge Budget vs Actual
Variance Analysis-Draft Report
8 Months Ending 05/31/19

Budget	%	Current Month				Year-to-Date					
		Actual	%	Variance	%	Budget	%	Actual	%	Variance	%
502,334	100	506,887	100	4,553		4,018,672	100	3,982,131	100	-36,541	-0.9
502,334	100	506,887	100	4,553	0.9 CRANE SURCHARGE REVENUES	4,018,672	100	3,982,131	100	-36,541	-0.9
					General & Administrative Expenses						
-76,891	15.3	-62,265	12.3	14,626	19 Salaries & Wages	-615,128	15.3	-523,680	13.2	91,448	14.9
-6,236	1.2	-6,163	1.2	73	1.2 Insured Benefits	-49,888	1.2	-46,305	1.2	3,583	7.2
-17,356	3.5	-15,810	3.1	1,546	8.9 Retirement Benefits	-138,848	3.5	-120,311	3	18,537	13.4
					-100 Other Benefits			-36,170	0.9	-36,170	-100
-21,667	4.3	-21,667	4.3		General Insurance	-173,336	4.3	-173,333	4.4	3	0.002
-1,084	0.2	-862	0.2	222	20.5 Repairs & Maintenance	-8,672	0.2	-2,056	0.1	6,616	76.3
-36,584	7.3	-3,155	0.6	33,429	91.4 Rep. & Maint.-Pola 14	-292,672	7.3	-78,535	2	214,137	73.2
-36,584	7.3	-53,521	10.6	-16,937	-46.3 Rep. & Maint.-Pola 16	-292,672	7.3	-189,040	4.8	103,632	35.4
-36,584	7.3	-8,235	1.6	28,349	77.5 Rep. & Maint.-Pola 17	-292,672	7.3	-147,200	3.7	145,472	49.7
-66,667	13.3	-67,438	13.3	-771	-1.2 Depreciation & Amorti	-533,336	13.3	-539,507	13.6	-6,171	-1.2
-667	0.1	-545	0.1	122	18.3 Supplies	-5,336	0.1	-19,385	0.5	-14,049	-263.3
-72,917	14.5			72,917	100 Professional Services	-583,336	14.5	-13,462	0.3	569,874	97.7
-6,249	1.2	-540	0.1	5,709	91.4 Other Contractual Ser	-49,992	1.2	-13,250	0.3	36,742	73.5
		-131,156	25.9	-131,156	-100 Overhead Allocation			-1,023,703	25.7	-1,023,703	-100
					Typhoon Expense			-6,863	0.2	-6,863	-100
-379,486	75.5	-376,341	74.3	3,145	0.8 General & Administrative Expenses	-3,035,888	75.5	-2,932,801	73.7	103,087	3.4
122,848	24.5	130,546	25.8	7,698	6.3 OPERATING INCOME (LOSS)	982,784	24.5	1,049,331	26.4	66,547	6.8
					Other Income & Expense						
-31,764	6.3			31,764	100 Other Expense	-254,112	6.3			254,112	100
-31,764	6.3			31,764	100 Other Income & Expense	-254,112	6.3			254,112	100
-411,250	81.9	-376,341	74.3	34,909	8.5 DIRECT LABOR COSTS	-3,290,000	81.9	-2,932,801	73.7	357,199	10.9
91,084	18.1	130,546	25.8	39,462	43.3 NET INCOME (LOSS)	728,672	18.1	1,049,331	26.4	320,659	44

PORT AUTHORITY OF GUAM
CONTRACT SUMMARY UPDATE

No.	Consultant/Vendor	Type of Service	Solicitation Method Reference No.	Division	Contract Term	Initial Term	Expiration After Options	Next Renewal Due Date	Annual Amount (Comments / Notes)
PROFESSIONAL SERVICES									
1	N.C. Macario & Assoc.	A/E Design and Consulting Services	RFP-016-002	Engineering	2 years with option to renew for 1 additional year	10/07/16 to 10/06/18		-	FULL TERM
2	G4S	Implementation & Integration of TOS	RFP-013-004	IT	5 years	2014 to 2019	2019		FULL TERM
3	A1 - Guam WEBZ	Web Development, Hosting, Support and Maintenance Svcs	RFP-014-006	IT	3 yrs w/ options NTE 5yr	04/03/2015 to 04/02/2018	04/02/20	04/02/19	Fees based on rates
4		Classification/Compensation Position Maintenance	RFP-014-001	HR	1 yr w/ option NTE 5 yr	06/01/14 to 05/31/15	05/31/19		work on new RFP for publication
5	AM Insurance	Insurance Coverages	GSA/PAG-020-17	Finance	5 years	10/01/2017 to 09/30/2022	09/30/22	09/30/19	Premium based
6	AM Insurance	Workers Compensation Coverages	GSA/PAG-018-17	Finance/Safety	1 year - 2017 to 2018	8/1/2018 to 7/31/2019	07/31/19		New Bid packet sent to GSA
7	Matson	Matson-Technical Support Services	RFP-016-003	EQMR	Extended to may 19, 2020	11/4/16 to 11/3/17	11/03/20	05/19/20	490,000.00
8	Bank of Guam	Banking Services	RFP-014-004	Finance	5 years	6/1/14 to 5/31/19	05/31/19		Need New RFP
9		Risk Management Consultant	RFP	Finance	Need to prepare RFP	Pending Requisition and Scope of Work			Need New RFP
10	OMEGA Safety	OSHA Training & Certification Services for Maritime Terminal Operations	RFP-017-003	Human Resources	3yr w/ 2- 1Yr options NTE 5 years	8/13/2018 to 8/13/2021	08/13/23	08/13/21	Fees based on rates
11	Pacific Human Resources, Inc.	Drug Free Workplace Program	RFP-015-002	Human Resources	3 yr. w/ 2 options NTE 5 years	03/19/15 to 03/18/2018	03/18/20	03/18/19	Fees based on rates
12		Legal Services	RFP-015-004	Corporate	1 yr w/options NTE 4 years	06/17/15 to 06/16/2016	06/16/19		working on new RFP with AG's office
13	TakeCare dba: FHP	Medical Examination Services	RFP-017-002	Human Resources	3 yr. w/ 2 options NTE 5 years	9/21/17 to 9/20/20	09/20/22	09/20/20	Fees based on rates
14	Pro Marine Technology	Underwater Assessment & Inspection Services	RFP-015-001	HarborMstr	2 yrs w/ 3 options NTE 5yr	07/17/15 to 07/16/2017	07/16/20	07/17/19	Task Order Based
15	Tri-Star	M & O of F-1 Fuel Pier Facility	RFP-013-003	Engineering	5 years	04/01/14 to 06/11/19	06/11/19		Addr. Protest/ on Mon to Mon ext.
16	Unitek Environmental-Guam	Environmental Consulting Services-SWPP Compliance	RFP-014-002	Engineering	1 yr w/ option NTE 5 yr	07/01/14 to 06/30/15	06/30/19	-	working on new RFP for publication
17	Deloitte & Touche	Annual Independent Audit Services	RFP-018-003	Fiscal	FY18, FY19, FY20, w/ 1Yr Option	FY18, FY19, FY20, w/ 1Yr Option	12/31/2022	12/31/2021	\$45,000.00
18	Parsons Brinckerhoff /WSP	OAE - Owner Agent Engineer	RFP-015-003	Planning	1 yr w/ 4 options NTE 5 yrs	9/9/15 to 9/8/16 exercised options	09/08/20	09/08/19	\$2.58mil
19	Nick Captain and Assoc.	Appraisal Consulting Services	RFP-016-001	Commercial	3yrs w/2 options NTE 5yrs	4/13/16 to 4/12/19	04/12/21	04/12/19	Check w/End User

PORT AUTHORITY OF GUAM
CONTRACT SUMMARY UPDATE

No.	Consultant/Vendor	Type of Service	Solicitation Method Reference No.	Division	Contract Term	Initial Term	Expiration After Options	Next Renewal Due Date	Annual Amount (Comments / Notes)
20		A/E Design and Consulting Services New Admin Building	RFP 019-001	Engineering		2 years w/3 options			Cancelled change in SOW
21	N.C. Macario & Associates	A/E Design and Consulting Services Golf Pier	RFP 019-002	Engineering		2 years w/3 options			currently in Cost Negotiations
22	N.C. Macario & Associates	A/E Design and Consulting Services EQMR, Warehouse No.1, Waterline	RFP 019-003	Engineering		2 years w/3 options			currently in Cost Negotiations
CONSTRUCTION CONTRACTS									
No.	Consultant/Vendor	Type of Service	Solicitation Method Reference No.	Division	Contract Term	Initial Term	Expiration After Options	Next Renewal Due Date	Annual Amount (Comments / Notes)
1	Korando Corporation	Concrete Asphalt Pavement and Fire Hydrant Repairs	IFB-CIP-17-002	CIP	240 calendar days	ONGOING - Project commenced: 9/4/18			\$2.7 Mill
2	Canton Construction	Agat Marina Demolition and Removal of Dock "B"	IFB-CIP-018-001	CIP	120 calendar days	NTP commencement date: Dec 27, 2018.	completed		\$50,243.67
3	ProPacific Builders Corp.	Design/Build to Supply & Install 8,000 Gal. Double Wall Fuel Tank w/ Fuel Dispenser & Appearances	IFB-CIP-018-002	CIP	245 Calendar days from NTP. See Change Order No.1	ONGOING - Project commencement: 7/16/18	completed		\$272,000.00
4	AYM International	Trench Drain Repairs and Upgrade	IFB-CIP-018-003	CIP	182 Calendar Days	ONGOING - Project commencement: 11/26/18			\$456,759.30
5	Jones & Guerrero	Steel Poles and Solar LED Lighting Installation	IFB-CIP-018-004	CIP	243 Calendar Days	ONGOING - Project commenced: 9/10/18	completed		\$336,561.02
6	American Builders LLC	Re-Painting of the CMU Wall and Terminal Booths and Replacement of Barbed Wire.	IFB-CIP-019-001	CIP	122 Calendar Days	Pending NTP			Contract Signed, PO Issued
7	Highway Specialty Services	Thermo Plastic Striping Paint, pavement marking numberings and Alpha characters.	IFB-CIP-019-001	CIP	182 Calendar Days	Pending NTP			Contract Signed, PO Issued
8	Murphy Enterprises Inc.	Load Center Hardening Project	IFB-019-004	CIP	243 Calendar Days	bid opened 6/19/19			IFB Packet under review

Blue - Requires new RFP

Light Orange - Work in Progress

**Port Authority of Guam
Capital Improvement Projects
Engineering Division
Summary Status**

As of June 21, 2019

Fact Sheet No. 82

Project:	Container Yard Asphalt, Concrete Pavement and Fire Hydrant Valve Repairs
Project No.:	IFB No. PAG-CIP-017-002
Project Amount:	\$2,770,379.98
Funding Source:	Port Authority of Guam – FMF
Contractor:	Korando Corporation
Construction Manager:	PAG Engineering/CIP
Notice to Proceed:	September 4, 2018
Project Completion:	240 Calendar days
Work Status:	As of June 21, 2019, Korando Const percentage of work accomplish is at 89%. Korando Corporation continue working at areas T and Remaining of dockside F-3. Korando was granted a time extension of 86 days new completion date is July 29, 2019.

Project:	Container Yard Trench Drain Repair
Project No.:	IFB No. PAG-CIP-017-003
Project Amount:	\$456,759.00
Funding Source:	Port Authority of Guam
Contractor:	AYM Construction
A/E Consultant:	AM ORIENT Consulting Engineers
Construction Manager:	PAG Engineering./CIP
Notice to Proceed:	November 26, 2018
Project Completion:	May 26, 2019
Work Status:	AYM continue fabrication of trench drain concrete cover and Demolition, Fabrication of concrete wall at area "G". AYM fabricated a total of 59 ea. concrete cover as of June 19, 2019 at the job site. 5 more sets no. 60 to 64 are for inspection on Sunday 6/23/19 and for pouring on Monday, June 24, 2019. AYM requested for 90 days time extension and granted by the Port. New contract completion is on Aug. 25, 2019. Work Percentage at 42%

Project:	Harbor of Refuge Pump Station and Installation of Waste Water Injector Pump
Project No.:	TBD
Project Amount:	TBD
Funding Source:	Dept. of Agriculture Fish and Wild Life Boating Grant
Contractor:	TBD
Construction Manager:	PAG Engineering/CIP Division
Notice to Proceed:	TBD
Project Completion:	TBD
Work Status:	Awaits MOU approval from Attorney General and Governor.

Project: Harbor of Refuge Installation of Mooring Blocks
Project No.: TBD
Project Amount: TBD
Funding Source: Dept. of Agriculture Fish and Wild Life Boating Grant
Contractor: TBD
Construction Manager: PAG Engineering/CIP Division
Notice to Proceed: TBD
Project Completion: TBD
Work Status: Awaits MOU approval from Attorney General and Governor.

Project: Rehabilitation of H-Wharf and Access Road
Project No.: TBD
Project Amount: TBD
Funding Source: PAG Engineering/CIP Division
Contractor: TBD
Construction Manager: PAG Engineering/CIP Division
Notice to Proceed: TBD
Project Completion: TBD
Work Status: Meeting and Environmental assessment by WSP and Designer is on-going as of March 22, 2019.

Project: A/E Services for Golf Pier Repair
Project No.: RFP-PAG-019-002
Project Amount: TBD
Funding Source: PAG Engineering/CIP Division
Contractor: TBD
Construction Manager: PAG Engineering/CIP Division
Notice to Proceed: TBD
Project Completion: TBD
Work Status: As of April 22, 2019, PAG Procurement issued an Intent to Award to N.C. Macario and Assoc..A/E for the above RFP. Awaits cost negotiation.

Project: A/E Services for EQMR & Warehouse I Building and Relocation of PAG Water Line
Project No.: RFP-PAG-019-003
Project Amount: TBD
Funding Source: PAG Bond Funding
Contractor: TBD
Construction Manager: PAG Engineering/CIP Division
Notice to Proceed: TBD
Project Completion: TBD
Work Status: As of April 22, 2019, PAG Procurement issued an Intent to Award to N.C. Macario and Assoc..A/E for the above RFP. A/E to submit cost proposal.

Project: New Administration Building Construction
Project No.: TBD
Project Amount: TBD
Funding Source: PAG Engineering/CIP Division
Contractor: TBD
Construction Manager: PAG Engineering/CIP Division
Notice to Proceed: TBD
Project Completion: TBD
Work Status: Awaits PAG Procurement for the advertisement of A/E Professional Services .

Project:	Repainting CMU Wall, Gate Booth 1, 2, and 3 and Container Yard Barbed Wire Replacement
Project No.:	IFB-PAG-CIP-019-001
Project Amount:	\$139,449.00
Funding Source:	Marad
Contractor:	American Builders LLC,
Construction Manager:	PAG Engineering/CIP Division
Notice to Proceed:	August 1, 2019BD
Project Completion:	November 30, 2019
Work Status:	PAG Procurement issued a Purchased Order on May 30, 2019 and Contractor acknowledge on June 17, 2019. PAG Engineering conducted a Pre- Construction Meeting with contractor and other PAG Division on June 20, 2019 regarding insurance documents prior to start of work.

Project:	Remove and Replace Thermoplastic Paint in Cont. Yard Area U, V and W
Project No.:	IFB-PAG-CIP-019-002
Project Amount:	\$82,940.00
Funding Source:	Marad
Contractor:	Highway /Safety Services
Construction Manager:	PAG Engineering/CIP Division
Notice to Proceed:	TBD – Awaits TWIC Card issuance.
Project Completion:	182 calendar days from notice to Proceed
Work Status:	PAG Procurement issued Purchase Order to Highway Safety

Project:	Refurbishment and Hardening of Load Center Buildings 1, 2, 3 and 4
Project No.:	TBD
Project Amount:	TBD
Funding Source:	PSGP 2017
Contractor:	TBD
Construction Manager:	PAG Engineering/CIP Division
Notice to Proceed:	TBD
Project Completion:	TBD
Work Status:	PAG Procurement conducted a Bid Opening on June 19, 2019 of the above project. PAG to evaluate responsible responsive bidder.

2019 WORK INJURY REPORT

<u>Divisions</u>	<u>*Lost-time</u>	<u>**Recordable</u>	<u>*** Refused Treatment</u>
Stevedoring	1	0	0
Transportation	0	0	0
Terminal	0	0	0
EQMR	0	1	1
Others	<u>0</u>	<u>0</u>	<u>0</u>
Total	1	1	1

Work Injury Summary for this reporting period: 4/24/2019 thru 6/24/2019

Total Injuries for 2019 for this period: 3–Injury

1-- Lost-time

1– Recordable

1– Refused Medical Attention

***Lost-time** = If an employee was injured on the job and medical doctor sent him/her home, his/her injury is considered a lost-time.

****Recordable** = If an employee was injured on the job and medical doctor treated him/her and released him/her back to work on the same day (Recordable because of medical charges).

*****Refused Medical Attention:** Filed WC Forms 201 & 202 for record purposes only.

Vessel	Ref #	Arrive	Depart	Berth Hrs	Total Cntrs	Crane Used	Egpt Ops Hrs	Loss Hrs	Nmph	Gmph/shift													
										Gmph	1st	2nd	3rd	4th	5th	6th							
02 - 08 June 19																							
Matson Papa Mau/45/46	25330	6/3/2019	6/5/2019	48.1	100	G6	5.2	1.3	25.6	19.2	17.5	26.7	13.8										
Matson Manukai/198w	25321	6/4/2019	6/5/2019	27.9	888	G5,G6	36.7	5.2	28.2	24.2	24.7	21.9	35.5										
Kota Hidayah/178	25329	6/5/2019	6/6/2019	15.1	446	G5,G6	21.0	1.3	22.6	21.2	27.0	21.9											
APL Guam/odq3mr	25328	6/6/2019	6/7/2019	28.0	464	G4,S/g2	28.8	4.2	18.9	16.1	20.9	13.5											
Mariana/1915rg	25332	6/6/2019	6/6/2019	3.7	17	G6	1.1	0.0	17.0	15.4	15.4												
Total				122.8	1915		92.8	12.0															
Comments:																							
Matson Papa Mau = Gantry #6 (26 mins standby - mechanic repairing spreader, won't unlock).																							
Matson Manukai = Gantry #5 (19 mins total standby - unplug reefers for discharge; 14 mins standby - electrician inspect/restore power - no power; 03 mins standby - for agent instructions; 16 mins standby - mechanic resetting cable - stuck on catwalk) - Gantry #6 (12 mins standby - resetting, recalibrating, & adjusting spreader).																							
Kota Hidayah = Gantry #5 (14 mins standby - restoring power - no power) - Gantry #6 (05 mins standby - balancing out vessel).																							
APL Guam = Gantry #4 (15 mins standby - Ship crew adjusting shipgear; 07 mins standby - loading two container for stvedore employees to stand on; 06 mins standby - electrician replacing light bulb).																							
Mariana = Normal ops.																							
Personal Injury/Mishap During Ops																							
Vessel																							
Nature/Cause																							
Matson Papa Mau																							
None reported/recorded																							
Matson Manukai																							
None reported/recorded																							
Kota Hidayah																							
None reported/recorded																							
APL Guam																							
None reported/recorded																							
Mariana																							
None reported/recorded																							

**WEEKLY VESSEL OPS
PRODUCTIVITY REPORT (FY19)**

Vessel	Ref #	Arrive	Depart	Berth Hrs	Total Cntrs	Crane Used	Egpt Ops Hrs	Loss Hrs	Nmph	Gmph	Gmph/shift												
											1st	2nd	3rd	4th	5th	6th							
26 May - 01 June 19																							
Mariana/1914rg	25315	5/26/2019	5/27/2019	11.8	28	G6	1.9	0.0	14.7	14.7	14.7												
APL Saipan/0ddq3lr	25316	5/27/2019	5/28/2019	36.9	398	G5,G6	17.7	2.3	25.8	22.5	17.3	30.0											
Matson RJ Pfeiffer/442w	25269	5/28/2019	5/29/2019	23.8	704	G5,G6	29.1	3.1	27.1	24.2	20.9	29.2											
Matson Papa Mau/44/45	25319	5/28/2019	5/29/2019	21.1	96	G6	6.0	2.0	24.0	16.0	14.7	17.9											
Mariana/1914rg	25320	5/29/2019	5/30/2019	6.7	8	G5	2.9	1.3	5.0	2.7	2.7												
Pacific Condor/164	25312	5/29/2019	5/30/2019	22.9	29	G6	1.7	0.0	17.1	17.1	10.0	23.3											
Kyowa Falcon/11	25313	5/31/2019	6/1/2019	21.9	163	G6	15.0	3.5	14.2	10.9	5.4	17.2											
Total				145.1	1426		74.3	12.2															
Comments:																							
Mariana = Normal ops.																							
APL Saipan = Normal ops.																							
Matson RJ Pfeiffer = Gantry #6 (13 mins standby - spreader under repair - won't unlock).																							
Matson Papa Mau = Gantry #6 (02 mins standby - waiting for agent instructions).																							
Mariana = Normal ops.																							
Pacific Condor = Normal ops.																							
Kyowa Falcon = Gantry #6 (30 mins total standby - removal & reattached spreader).																							
Personal Injury/Mishap During Ops																							
Vessel																							
Nature/Cause																							
Mariana																							
APL Saipan																							
Matson RJ Pfeiffer																							
Matson Papa Mau																							
Mariana																							
Pacific Condor																							
Kyowa Falcon																							

JUNE 20, 2019

EQUIPMENT COUNT	TOTAL EQUIP	EQUIP UP
TOPLIFTERS TL#3 IS UNDER CORROSION WORK & TL#7 ELECTRICAL WORK	7	6
FORKLIFT 20TON	3	3
FORKLIFT 10TON	6	6
FORKLIFT 5TON	8	8
TRACTORS T99 DEF 5TH WHEEL CYL	29	28

PORT OF GUAM CRANE REPAIRS PRIORITY LIST

Review Date: 06/17/19 Last updated: 06/19/19								
Date	Observations	Comments	Crane 4	Crane 5	Crane 6	Dept	Resp.	Status on June 2017
A	Example observation	Example Recommendation	X	X	X	Safety	John Doe	(Indicate date of update or action taken or next steps...if action remains open in January meeting, then add comments, but keep Dec comments in here also.) 12/9 - example response - completed crane 5 on Dec 8 immediately; awaiting parts for crane 4; crane 6 safety issue prevents us from completing due to..... 1/7/17 - example - crane 4 completed, needs testing; crane 6 safety issue still needs to be resolved 1/10/17 Roy checked stock AI counting AK25 08/2/2017 Corrosion - Room Splice plates, nuts and bolts below machinery/house on G44 Completed 8/8/17-Cont. from previous report 8/22/17 - nuts and bolts upper leg splice plates: 100% 8/29/17 - Nuts, bolts upper leg splice plate 100% 9/6/17- G16 L/R/R/H frt leg water side completed upper splice plates R/H & L/F dock side nuts and bolts in progress. 09/26- G16 80% complete Front left leg splice splices in progress. 10/31/17-Preventive- G4& G5 Boom splice plate and Machine house girder nuts and bolts completed. G6 Diagonal splice plates/4 legs completed. G6 95% machine house girder nuts and bolts. 11/15/2017- Same 11/29/17- On going 12/7/17-(corrosion) L/L front splice plate nuts and bolts 1000% R/L 80% on gantry #4 12/13/17-awating nuts and bolts Crane rental materials 12/19/17-(corrosion)pending RF wasteside nuts and bolts center area pending G16 1/3/18- G4,G5 and G6Majority of nuts and bolts after corrosion control were found in good conditions. 1/9/18- corrosion- start tail section G16 70 % completed welding-kin to order bolts 1/17/18-tail section G16 80% completed 1/23/18 -- same on going 1/30/18 -- on going 2/6/18 -- on going 2/13/18 -- on going 2/20/18 -- on going 2/27/18 -- on going 3/7/18 -- on going 3/13/18 -- on going 3/20/18 -- Nuts & bolts for project have arrived 4/10/18 -- still awaiting the completion of nuts & bolts order 4/17/18 --still awaiting completion of nuts & bolts // awaiting confirmation from GSA
A	A number of structural bolts are found damaged by rust	Structural nuts and bolt found with delamination's (acoring or mushrooming) like deformation are recommended for immediate replacement.	X	X	X			412/414

Date	Observations	Comments	Crane 4	Crane 5	Crane 6	Dept	Resp.	Status on June 2017
12/16	"Knife/jagged edges" on apex box girders need repair	Corrosion control				412		<p>06/19/19 -- On Going: 80% Completed</p> <p>8/8/17-Cont. from previous report 8/8/17- Waiting for crane rental to go through GSA and repelling classes with GFD. 8/22/17 - Pending crane rental 08/29/17- Pending Crane Rental 9/6/17- Still waiting on crane rental 9/23/17- Waiting on Crane Rental 11/11/2017- Same 12/12/17- Same As #1 12/19/2017- Pending Crane Rental 1/9/18- pending crane rental 1/17/18- pending crane rental 1/23/18 -- pending crane rental 1/30/18 -- Requisition was inputted 1/29/18 #16430 2/6/18 -- pending crane rental 2/13/18 -- Requisition awaiting signature from GSA 2/20/18 -- Awaiting sig from GSA 2/27/18 -- Awaiting approval/nuts & bolts have already been Poed and have been ordered already. 3/7/18 -- awaiting approval 3/13/18 -- same 3/20/18 -- Crane PO Approved; awaiting to schedule as soon as materials are complete 3/27/18 -- awaiting for all materials to arrive 4/17/18 -- still awaiting for all materials to arrive 5/1/18 - awaiting for all materials 5/8/18 -- same</p>
12/16	Continuation of #1							<p>5/1/18 -- completion of nuts & bolts are not in yet// still waiting 5/9/18 -- not all nuts & bolts have arrived yet // still waiting 2/19 - Replace center support beam inner/outer plates nuts & bolts 5/18 - Remove of elevator mass (G4, G5, G6) 08/18 -- Replaced Operator's cab mounts nuts & bolts (trolley slide)(Welders) (G4) 11/18-- Repair festoon l beam 20' near rear section (G5) 08/18 -- Replace & repair left hand #4 and right hand #2 splice plate joints nuts & bolts (G5) 01/19 -- replace nuts & bolts top section walkway, replace nuts & bolts on trolley/rear vertical rollers 2/19 - Replace Center Support beam inner/outer plates nuts & bolts (Welders) (G4) 3/19 - Replace upper festoon cable service platform braces nuts & bolts (G5) 3/19 -- Replace lower section festoon cable service platform nuts & bolts (G5) 4/19 Replace festoon rail l beam on tail section (G5) 4/19 -- Repair damaged trolley rail right hand side boom joint 4/19- Replace outer/inner splice plates, nuts & bolts on diagonal center support beam 100% completed 5/19 Replace nuts & bolts above operator's trolley parking area on braces (G4)</p>
1								
2	A		X	X	X			

Date	Observations	Comments	Crane 4	Crane 5	Crane 6	Dept	Resp.	Status on June 2017
3 12/16	Original Trolley flood lights have been removed	Trolley flood lights were removed from the crane. A minimum of 5 lux is current standard for working cells on the vessel	X	X	X	411		08/8/17-Cont. from previous report 08/8/17- Installation Completed, flood lights up and running. 8/15- Finishing touches on Electrical connections being done. 8/22/17 Installation of angle bar on G4,G5 and G6 08/29/17- Lights installed on G4,5 & 6 awaiting electrical conduit. 9/6/17- G4's and #6 completed on conduit piping. G4 90% completed but all lights are working 09/23/17- Gantry #4 90% complete 10/31/17- in progress 11/15/2017- #4 scheduled for Friday 11/17/2017 8/8/17-Cont. from previous report. Spreader#4 25% 08/8/17- Spreader#5 Completed 08/4/17 Spreader#4 in shop work begin on spreader#4 on 08/7/17 1,2,3,5 & 6 completed. 8/15- spreader#4 @15% completed as of 08/15/17 8/22/17 - Spreader#5 Completed Spreader#4 25% 8/29/17- Spreader #4 25%/9/17- spreader#4 50% completed 9/26/17 - Spreader#4 60% completed 10/31/17- Spreader#4 completed 11/15/2017- COMPLETED
4 12/16	spreader with possible crack. The unit must be investigated	commission NDT inspection of headlock and spreader (to include all spare equipment)	X	X	X	414		08/08/17- Cont. from previous report 08/8/17- Kin to get with PBA to justify why Twin Twenty is needs to be installed. He is to advise them that we are not going to put one on there because it is not needed. (Twin twenty has not been used in years) 8/15- waiting for Jose's response to remove Twin twenty from listing 8/29/17- To be discussed w/PBA as per Julio 9/6/17- same 9/26/17- Waiting on PBA recommendations 11/15/2017- SAME 12/12/17- Status Remains 1/3/18 parts needs to be ordered 1/9/18- crane- emailed Corn at Watson for part numbers from assy. waiting for reply from Watson's quote and status of spreader 1/17/18 - waiting on Watsons reply 1/23/18 --waiting on Watson reply 1/30/18 -- waiting for quote from Watson 2/6/18 -- waiting for quote from Watson 2/13/18 -- waiting quote from Watson 2/20/18 -- Waiting for quote from Watson/Julio to follow up with quote 2/27/28 -- awaiting quote from Watson 3/7/18 --- awaiting quote 3/13/18 -- same 3/20/18 -- received quotation; process of inputting requisition 6/19/19 -- As per Maintenance Manager they are not to be installed
5 12/16	Twin twenty detection system has been disabled on all spreader on site.	Twin twenty detection system is recommended. A mechanical system could be installed instead of the existing complicated sensor protection.	X	X	X	414		4 and 5 are completed. 2/14/17- All crane cables done 3/14/17- Done but verify
6 12/16	Repaired flippers have been found with out safety chains	safety chains are required to ensure a broken flipper does not fall and injure ground personnel	X	X	X	414		
7 12/16	Headlock Gate access lock does not work.	The headlock basket is often used to transport personnel, the gate must be fixed or modified to latch to protect personnel riding equipment.	X	X	X	414		

Date	Observations	Comments	Crane 4	Crane 5	Crane 6	Dept	Resp.	Status on June 2017
8 12/16	A Bolts securing wire rope clamps/blocks to drums do not have the safety wires	Safety wires for bolts securing ropes should be installed to ensure that bolts do not vibrate loose. All cranes, All Locations.				414		Boom wire rope bolt's safety wires have not been installed on any of the cranes. Trolley drum is partially done. Hoist drums are completed on all cranes.
9 12/16	A Storm Stowage Pins do not have keepers to secure the pin in the stowed position.	Fabricate and install keeper mechanism to prevent the stowage pins from lifting during a storm event	X	X	X	414		No action 3/14/17 - Joe T. to plan lock fabrication 3/21/17 Completed
10 12/16	A No life rings or floatation devices on the crane	Furnish and install floatation device with retrieval rope to assist in case personnel fall or slip into the water	X	X	X	414		3/14/17 - Tell Safety /stevedoring 3/28/17 - refer to safety 6/30/2017 No progress observed 9/6/17 - Stevedoring/Safety 9/26/17 - Stevedoring/Safety 11/15/2017 - Stevedoring/Safety 1/9/18 - Per Julio reminded Safety (Paul Salas) about this on 1/18/18 pending Safety 1/23/18 -- pending safety 1/30/18 -- pending safety 2/6/18 -- pending safety 2/13/18 -- pending safety 2/20/18 -- pending safety 2/27/18 -- pending safety 3/7/18 -- pending safety 3/13/18 -- pending safety 3/20/18 -- pending safety 3/27/18/ -- pending safety 4/10/18 -- pending safety 4/17/18 -- Ernie spoke with Paul Salas and Vince Actalle on 4/16/18 and reminded them on this. 5/1/18 -- pending safety

Date	Observations	Comments	Crane 4	Crane 5	Crane 6	Dept	Resp.	Status on June 2017
11/12/16	A Handrail, ladders and stairs exhibit corrosion at many different levels of severity	Where handrails and ladders are corroded to the point that the structural integrity can no longer be relied upon as fall protection the handrail or ladder should be repaired or replaced.	X	X	X	412/414		<p>08/08/2017-- continued from previous reports</p> <p>08/8/2017- G#5 Boom Station and bridge areas completed 08/5/17 by Welders,G#6 on going</p> <p>8/15- G#6 boom station/bridge areas to be worked on 08/17-08/19 by welders</p> <p>Corrosion- G#5 PM & top coat on boom station. G#6 pending boom tip and grider, hold on boom and topcoat. 8/22/17- Boom Railing nuts and bolts on G6 Completed</p> <p>08/29/17- (corrosion) To primer & top coat boom station newly install railings.</p> <p>8/29/17-(welders) Boom station 50% due to Barge SSR</p> <p>9/6/17- welders G#6 80% rear boom station. Bridge area complete 9/26/17- (Welders) G#6 80% complete (Corrosions) to primer and top coat boom station newly installed railing on next open window and weather permits.</p> <p>10/31/2017- G6 boom station bridge area completed. stairway to machine house completed.</p> <p>11/15/2017- Fabricating hadrails for #6 generator housing abd schedule to install #4 railings for 11/18/17.</p> <p>11/28/17- gantry#4 stairway 1 thru 3, Landing 1 thru 3 completed</p> <p>12/7/2017-(Corrosion) CC on boom station on railing and catwalk nuts and bolts 80%, Machinery Door fabrication ready for installation on G#4</p> <p>12/7/2017-(welders) G#4 stairway #5 thru #7 landin #4 and #6 completion nov. 28-dec 1, 2017 pending stairway #4 & bridge to operators cab</p>
11	Handrail, ladders and stairs exhibit corrosion at many different levels of severity	CONTINUATION						<p>11/18 -- replace 2 each upper hand rail at tail section (G5)</p> <p>11/18 -- replace tail section main upper hand rails (G5)</p> <p>12/18-- replace operator's cab catwalk & install trolley wire rope mounting brackets (G5)</p> <p>01/19 -- Replace boom handrails 100% (G6)</p> <p>01/19 -- replace main ladder #1</p> <p>2/19 fabricate boom tip hand rails/awaiting for installation</p> <p>03/19-- Replace upper festoon cable service platform handrails</p> <p>03/19 -- continue om lower festoon cable service P/F hand rails</p> <p>3/19 -- install safety chains on tail section 100%</p> <p>3/19 Replaced left hand tail section hand rails</p> <p>3/19- Replace right hand tail section hand rails: to trolley excess & midsection</p> <p>05/19 -- Replace apex ladder # 1 (G4)</p> <p>05/19 Fabricate & replace hand rails from machine house to tail section upper rear walkway</p> <p>05/19 Fabricate & replace handrails for landing #6, stair way #6 & bridge walkway to operator's cab</p> <p>6/19 -- Repair on floating support beam & replace nuts & bolts on floating support beam & structure mounting brace</p> <p>06/19 - Replace catwalk grating on engine room side (G4)</p> <p>06/19/19 -- Corrosion: 75% Completed</p> <p>12/12/17- Update G#4 stairway. G#5 ups cab completed by this weekend #4 back reach pending</p> <p>12/19/17- (Corrosion) needs repair APFX area ladder (welder)- Engine house handrails complete stairway completed</p> <p>1/3/18-b-G4 operators cab hand rail repaired G6 tail section (railing nuts and bolts) 20%</p> <p>1/9/18- corrosion- still on going</p> <p>1/17/18 corrosion- still on going</p> <p>1/23/18 -- corrosion- still on going</p> <p>1/30/18 -- welders: still on going corrosion: nuts & bolts on still beams on Gantry#6 @ 60% // boom splice plates nuts & bolts 80% on Gantry 6.</p> <p>2/6/18 -- still on going</p> <p>2/13/18 -- corrosion: gantry 6 handside @ 95% // working on fuel tank on gantry 4</p> <p>2/20/18 -- same</p> <p>2/27/18 -- on going</p> <p>3/7/18 -- on going</p> <p>3/13/18 -- on going</p> <p>3/20/18 -- Corrosion: completed Gantry 6 stairway.welder: completed handrails on operators cab</p> <p>3/27/18 -- on going</p> <p>4/10/18 --Welders: railing on Gantry #4; stairway 4,6,7 completed</p> <p>4/17/18 --Welders: on going</p> <p>5/1/18 -- on going</p> <p>5/8/18 -- G#4 boom tip, 75% completed</p> <p>5/18 -- install handrails on Elevator section (G5)</p> <p>5/18 -- Fabricate & replace boom tip handrails & stairway railing (G5)</p> <p>8/18 -- replace back reach support beam & replace/repair handrails</p> <p>8/18 -- replace upper/lower handrails on landing & bridge to operator's cab section stairway & landings 1 thru 7 completed (G4)</p> <p>8/18 -- Repair railing operator cab bridge</p> <p>9/18 - fabricate & replace left hand & right hand upper and lower handrails boom butt forward</p>

Date	Observations	Comments	Crane 4	Crane 5	Crane 6	Dept	Resp.	Status on June 2017
12/16	A Remote lubrication piping observed to be broken or otherwise disconnected from pins (boom and forestays)	Fabricate and install new piping from the remote ports to the pin/shaft to ensure proper lubrication of rotating components	X	X	X	411		On going effort 3/14/17 - Progress made 3/21/17 - Purchase Piping 3/28/2017 - what is the status of piping and fitting. 6/30/17 Item is not finished. 6/30/17 issue not finished 8/15 - Per Julio Item completed 5/9/17 - GH5 & GH6 Completed
12/16	A Crane 6 is missing a complete wheel brake assembly and others were observed to not function	All wheel brakes should be enabled to ensure full breaking power is available in case of an emergency or an unexpected wind event.		X	X	411		
12/16	A Load cells are found out of calibration	Load cells after so many years of operation can become deformed and as a result not able to be calibrated.		X	X	411		08/08/17 - Cont. from previous report 08/8/17 - Eugene to come in on 08/10/17 to calibrate load cells 08/15/17 - WOH Issue closed
12/16	A Trolley position on Crane 5 was not properly established - during survey the trolley ran into the end of travel limit switch	Rope tension adjustment completed to survey of function - Maintenance procedure should call for verification of trolley position and function of slow down and stops		X		411		
12/16	A Back reach sheave observed with grinding noise	Left side inner hoist sheave on upper nest found with grinding noise. Possible bearing failure eminent.		X		414		3/14/17 - ask PBA to do job 3/28/17 - separate on/off 6/30/17 Sheave seems to have been replaced - Item closed No action 3/14/17-Completed
12/16	A Crane 6 water side wheel brakes are not operational	Wheel brakes are meant to secure the crane against micro burst winds and high wind events. This events are unpredictable in nature, therefore is advisable that the crane wheel brakes are placed back in operation as a first priority			X	411		
12/16	A Crane 6 observed to have two gantry motor brakes signals bypassed.	The motor brakes are the primary line of protection against allowing the crane to run freely on the rails if there is a wind event.			X	411		water side gantry motor brakes are not working 3/14/17-Completed

Date	Observations	Comments	Crane 4	Crane 5	Crane 6	Dept	Resp.	Status on June 2017
19 12/16	Crane 6 is found with the trolley slow down not operational	It is recommended that the slowdown protection is enabled on the trolley.			X	411		3/14/17- Judo to verify 3/28/17- Lito verifying 4/4/17- Completed
20 12/16	Outboard tie-down assembly at each corner of crane 6 cannot be tightened to securely engage the dock anchor due to obstruction with the gantry drive	Modify the assembly and its connection to the crane as required to allow the linkage to connect to the anchor in the dock and be tightened to remove all slack in the completed assembly			X	411/414		08/8/17-cont. from previous reports 08/8/17- On going monthly PM lubrication 8/15/17- on going monthly Ongoing monthly lubrication 8/29/17- lubrication completed - need to be loosen by fork lift as per Maintenance Manager. 9/6/17- on going monthly lubrication 9/26/17- on going monthly lubrication 11/15/2017- SAME 12/12/17- On going 414 Planning Project 12/19/17- on going welders planning project 1/9/18- still in planning stage to straighten 1/17/18- water side (outside) tie-down completed 1/23/18 -- Gantry H5 leg#3 outer landside -- loosen & completed 1/30/18 -- Welders -- Completed Jan 12 & 13, 2018**

Date	Observations	Comments	Crane 4	Crane 5	Crane 6	Dept	Resp.	Status on June 2017
21 12/16	Spare Parts Inventory	Provide for review and recommendation the current spare parts inventory (part name and quantity) with parts currently requisitioned	X	X	X	411		<p>8/8/17-Cont. from previous reports</p> <p>8/8/17 - on going</p> <p>8/15/17 - Ongoing</p> <p>9/6/17 - ongoing</p> <p>9/26/17 - on going, G.Diaz to Help with Set up of excel spreadsheet inventory listing</p> <p>10/31/17 - In progress</p> <p>11/19/2017 Master List established</p> <p>12/7/17 - A spare part, complete the part arrangement and labelling, we are now in the process of removing parts from G#2, G#3, Harbor crane, to be survey</p> <p>12/12/17 - Status Same</p> <p>12/19/17 - Crane - completed labelling arrangement parts remove none reusable</p> <p>1/8/19 - waiting for IT's recommendation on parts input into system.</p> <p>1/17/19 - waiting for IT's Recommendation</p> <p>1/23/18 -- waiting for IT's recommendation</p> <p>1/30/18 -- waiting for IT's recommendation</p> <p>2/6/18 -- waiting for IT's recommendation</p> <p>2/13/18 -- waiting for the program from IT</p> <p>2/20/18 -- being scheduled with IT</p> <p>2/27/18 -- Waiting for response from IT for recommendation</p> <p>3/7/18 -- waiting for IT's response</p> <p>3/13/18 -- waiting for IT's response</p> <p>3/20/18 -- waiting for IT's response</p> <p>3/27/18 -- on going// 1.Saban working on excel spreadsheet for inventory listing</p> <p>4/10/18 -- on going</p>
22 12/16	Festoon cable carrier wheels are found with damage bearings	Damage wheel can cause the system to collapse	X	X	X	411		

Date	Observations	Comments	Crane 4	Crane 5	Crane 6	Dept	Resp.	Status on June 2017
A	Unistrut and conduit clamps generally corroded in all areas of the crane	Replace Unistrut and conduit clips as required to safely and adequately attach conduits	X	X	X	411/412		<p>8/8/17--Cont. from previous reports</p> <p>8/8/17- GH4 brace and bolts installed; GH5 Brackets installed on boom/tail and trolley</p> <p>8/15/17- GH6 bracket installation on boom tail section 8/22/17 - Boom and tail section installation GH6</p> <p>8/29/17 - (Crane) Boom and tail section completed GH4- #6</p> <p>8/29/17-(Crane) On going GH4 100% replacing / stainless u-bolts; GH5 & 6 installing u-bolts 20%, GH5 Complete, GH6 10%</p> <p>9/6/17- crane #4 front boom area complete back reach still pending u bolts GH5 40% complete and GH6 40% completed.</p> <p>9/26/17- crane #4 front boom area complete back reach still pending u bolts GH5 40% complete and GH6 40% completed.</p> <p>10/31/2017- GH4, GH5 & GH6 -all brackets replaced.</p> <p>11/15/17-Working on schedule</p> <p>11/28/17- Gantry#4 boom tip -BdE 1 conduit replaced</p> <p>12/7/2017 (Corrosion) Replace unistrut S/S angle iron to back reach 100% GH4</p> <p>12/7/2017-(Crane) Replace the boom area piping into aluminum electrical conduit, we have already replaced 3 electrical conduits and one more and after that we will start replacing new electrical wiring (IN PROGRESS)</p> <p>12/12/17- (Corrosion)- GH4 completed boom and tail section/bracket removed installed new one.</p> <p>Pending replacement of conduit piping on GH4</p> <p>1/9/18- Waiting on open window to complete Apex Areas.</p> <p>1/17/18 - Ongoing - waiting for an open window</p> <p>1/23/18 -- Gantry #6 completed on the Apex Areas.</p> <p>1/30/18 -- Ongoing</p> <p>2/6/18 -- on going</p> <p>2/13/18 -- On going // measurement done by crane .after</p> <p>2/20/18 -- on going</p> <p>2/27/18 -- corrosion: Starting on sill beams on Gantry 6, waterside and dockside</p> <p>3/7/18 --on going</p> <p>3/13/18 -- Electrical conduit on sill beams completed; dock side</p> <p>3/20/18 -- Welding unistrut bracket on Gantry 6</p> <p>3/27/18 -- Corrosion. Completed unistrut brackets for Gantry 4</p> <p>//started on Gantry 5</p> <p>4/10/18 -- Unistrut bracket Complete from boom station to apex</p> <p>5/1/18 - on going</p> <p>5/8/18 -- GH4: boom station to Apex; boom station to tip is completed; GH5: Crane Mechanics installing aluminum on boom, boom hinge to boom tip.</p> <p>06/19/19: Continously on going</p>
	Unistrut and conduit clamps generally corroded in all areas of the crane	Continue						

Date	Observations	Comments	Crane 4	Crane 5	Crane 6	Dept	Resp.	Status on June 2017
24 12/16	Apex conduit fitting is found detached	Apex conduit fitting can leak water into the limit switch. L/S are part of the			X			8/2/17 - Cont. from previous reports 08/08/17 - Reoperation of conduit pipes on G4, G5 & #6 pending brackets and piping. Parts on order. Work will be scheduled upon arrival of parts and rental equipment. 8/15/17 - info to follow up 8/29/17 - ongoing 9/6/17 - crane waiting on open window 9/26/17 - Crane waiting on open window 11/15/2017 - Same 11/28/17 - Phenolic in progress 12/7/17 - awaiting for the corrosion to labriate and install the bracket. before we can start aluminum conduit. 12/12/17 - G66 labriate brackets once G16 is done move on to G5 & 4 12/19/17 - (G66) pending install electrical wiring inside conduit pipe - piping already installed. Corrosion- pending installation for boom station to AP7X 1/9/18 - Same as #23 1/17/18 - same as #23 1/29/18 - same as #23 1/30/18 - pending install electrical wiring inside conduit pipe- piping already installed. 2/6/18 - same 2/13/18 - same as #23 2/20/18 - same as #23 2/27/18 - same as #23 3/7/18 - same as #23 3/13/18 - same as #23 3/20/18 - same as #23 3/27/18 - same as #23 4/10/18 - same as #23 5/1/18 - same as #23 5/8/18 - same as #23 6/19/19 - Completed 5/2/17 - Gantry#4 Completed
25 12/16	Fuel line found with a leak	Diesel line leaks can be a source of engine fires	X			411		3/14/17 - Observe and access 3/21/17 - Recommended to put slack on boom down position 5/9/17 - Completed 6/30/17 - PBA Watson has not seen results of this inspection. Conform results so that issue can be closed.
26 12/16	Boom Hoist Rope Wear	Boom Hoist rope rubbing on roller guide at the apex and wearing strands, inspect and replace as required	X	X	X	411		3/14/17 - research for proper grease 3/28/17 - Is it rubbing or not need to verify 6/30/17 No progress.
27 12/16	Wire Rope Grease	Provide lubricant spec	X	X	X	411		

Date	Observations	Comments	Crane 4	Crane 5	Crane 6	Dept	Resp.	Status on June 2017
28 12/16	Handrail, stair treads, grating and ladders exhibit corrosion at many different levels of severity	Where handrails, stairs, treads, grating and ladders are corroded the hand-rail or ladder should be repaired or replaced	X	X	X	412		8/8/17- Cont. from previous reports. Kin to check with PBA to combine items #11 and #29. 8/29/17- Top coat R/H upper/lower leg @100% on GH6 12/12/17- refer to #11 12/19/2017- same
29 12/16	In general the coating system of the entire crane has surpassed its design life and is in a failed condition	Remove all rust, loose metal, scale, delamination, surface irregularities and apply new primer and top coat system	X	X	X	412		8/8/17- cont. from previous reports 8/8/17- Currently using Epoxy/Primer/Zinc Rich. Topcoat two part polyurethane. Progress on going on all cranes 8/15/17- Top coat R/H upper and lower leg @75% on GH6 8/22/17- GH6 Upper leg section to machine house completed. Leg Right rear to machine house 80% 9/6/17- Same 9/26/17- On going 10/31/2017- on going 11/15/2017- Same 12/12/17- refer to #11 12/19/17- same 1/17/18 - refer #11 1/23/18 -- refer #11 1/30/18 -- refer #11 2/6/18 -- refer #11 2/13/18 -- refer #11 2/20/18 -- refer #11 2/27/18 -- refer #11 3/7/18 -- refer #11 3/13/18 -- refer #11 3/20/18 -- refer #11 3/27/18 -- refer #11 4/10/18 -- refer #11 5/1/18 -- refer #11 5/8/18 -- refer #11 6/19/19 -- refer #11

Date	Observations	Comments	Crane 4	Crane 5	Crane 6	Dept	Resp.	Status on June 2017
30 12/16	CAT engine skid base vibration shocks seem to be damaged. Engine mount		X	X	X	411		<p>3/14/17 - request for CAT to do #6 6/30/17 issue closed 8/8/17- Hawthorne to order vibration dampeners. 8/22/17 Order next fiscal year just got quotation from hawthorne. 9/6/17-Still Waiting on Hawthorne 11/28/17 - still waiting for hawthorne recommendations 12/12/17 - As per Kin P. Hawthorne finally found part number awaiting quote. 1/3/18- same 1/9/18- crane- rec'd quote, pending requisition 1/17/18 - pending requisition 1/23/18 -- pending requisition from GSA -- awaiting for vendors' reply. 1/30/18 -- waiting for updated quote. 2/6/18 -- waiting for the updated quote. 2/13/18 -- waiting for updated quote. 2/20/18 -- Kin spoke to vendor today 2/20 and should be getting today 2/27/18 -- awaiting for vendor for quote 3/7/18 -- followed up and awaiting for quote 3/13/18 -- awaiting for quote 3/20/18 -- Received quote; trying to allocate funds 3/27/18 -- Process of inputting requisition 5/8/18 -- forwarded to GSA as of May 4 06/19/19 -- Parts in stock; new genset arriving late July; will change when it arrives</p>
31 12/16	Gantry hydraulic units appear to be overfilled	Overfilling can cause overheating of the assembly	X	X	X	411		<p>Crane 5- Land side is overfilled 4/4/17 - Completed</p>

Date	Observations	Comments	Crane 4	Crane 5	Crane 6	Dept	Resp.	Status on June 2017
32 12/16	Gantry gear lubrication	observed lack of lubrication or water infused lubrication at gantry open gears.	X	X	X	411	8/8/17 - Cont. from previous reports 8/8/17 - Monthly PM services On going 8/15/17 - Monthly PM completed on 08/10-08/11/2017 08/22/17 - On-going lubrication 8/29/17 - Monthly Ongoing 9/6/17 - ongoing Monthly lubrication 9/26/17 - Ongoing monthly lubrication 11/15/2017 - Same 11/28/17 - on going monthly lubrication 12/12/17 - Ongoing monthly lubrication 12/19/2017 - ongoing monthly lubrication 1/3/18 - on going 1/9/18 - on going month lubrication 1/17/18 - on going 1/23/18 -- on going 1/30/18 -- on going 2/6/18 -- on going 2/13/18 -- on going 2/20/18 -- on going 2/27/18 -- on going 3/7/18-- on going 3/13/18 -- on going 3/20/18 -- on going 3/27/18 -- on going 4/3/18 -- on going 4/17/18 -- on going 5/1/18 -- on going // monthly lubrication	
33 12/16	The spring reset E-stops should be replaced with units that remain engaged until manually reset.	current units are not safe. The units allow for automatic resetting of faults. This allows operators to reset and continue motion with out verification that remote condition has been cleaned.	X	X	X	411	No action 3/14/17 - Julio to replace correct. Order correct E-stops 4/4/17 - Completed	
34 12/16	Many wheel brake sensor fittings for open close wheel brake sensors are rusted out and could cut the sensor cable.	install new fittings	X	X	X	411	08/8/17 - On going maintenance (Weekly PM) 8/15/17 - On going - No leaks found - all fittings secured with Denso tape 8/29/17 - Monthly - Ongoing 9/6/17 - Weekly on going PM 9/26/17 - weekly inspection and on going PM 11/15/2017 - Same 11/28/17 - G4,G5 completed, G#6 completed	

Date	Observations	Comments	Crane 4	Crane 5	Crane 6	Dept	Resp.	Status on June 2017
35 12/16	An extinguisher is missing on gantry and others found with inspection tags out of date	Replace missing extinguishers and ensure all in place extinguishers have current inspection	X	X	X	411		8/8/17 - last fire extinguisher visual gauge - inspection by crane mechanics 07/31/2017 on all cranes. As per crane log book. 8/15/17 - All Cranes extinguishers are up to date and in good working order. 8/29/17 - All cranes extinguishers up to date. 9/6/17 - weekly inspection on going PM as of 09/6 all is good. 9/26/17 - Weekly inspections and on going Monthly PM 11/15/2017 - Same 12/12/17 - Ongoing weekly inspection on fire extinguishers 12/19/17 - same 1/9/18 - crane weekly inspections. If gauges are off Crane will notify Safety so they can replace safety equipment. 1/17/18 - pending safety 1/23/18 - pending safety 1/30/18 - pending safety 2/6/18 - pending safety 2/13/18 - pending safety 2/20/18 - pending safety 2/27/18 - pending safety 3/7/18 - pending safety 3/13/18 - pending safety 3/20/18 - This has been included as part Crane Maintenance weekly check list 3/27/18 - on going 4/10/18 - on going 4/17/18 - on going 5/1/18 - pending safety/ included with Crane weekly check list
36 12/16	ABB gantry control boxes seem to accumulate water due to wrong installation of metal cover	installation needs to be corrected.	X	X	X	411		3/14/17 - Check and verify 4/18/17 - COMPLETED 6/30/17 No progress observed 8/29/17 - Completed 100% 9/6/17 - Completed
37 12/16	Trolley motor brake on crane 4 appears to be dragging disc on left side	adjust brake alignment to provide equal pad pick up on both sides of disc	X			411		PAG seems to have attempted correction but now the unit drags on the right side 3/23/17 - Completed completed 02/10/2017
38 12/16	Trim/List/Stew bracket found broken	the unit controls the system form over travelling and damaging components	X			411		

Date	Observations	Comments	Crane 4	Crane 5	Crane 6	Dept	Resp.	Status on June 2017
39 12/16	Heater unit on gantry control panel is found not operational	replace heater unit	X			411		completed
40 12/16	HMI Operators Console found not operational	HMI Console offers functionality and safety features for operators. It is recommended that all units not working be repaired/replaced.		X	X	411		<p>PAG investigated and gave panels to Matson for repair- waiting for inventory card</p> <p>3/8/17 - Upon Arrival of ABB request will be made to upgrade system drive that they support</p> <p>9/15/17 - Consoles need to be upgraded/ waiting on ABB arrival.</p> <p>8/22/17 - Awaiting ABB to upgrade</p> <p>8/29/17 - Waiting for ABB input on upgrading system.</p> <p>9/6/17 - Awaiting ABB to upgrade system</p> <p>9/26/17 - SAME</p> <p>10/31/2017 - ABB recommended to upgrade.</p> <p>11/15/17 - Same</p> <p>12/12/17 - Min Pangelinan will be addressed on ABB upgrade.</p> <p>12/19/17 - same</p> <p>1/3/18 - same</p> <p>1/9/18 - Per ABB recommended to upgrade.</p> <p>1/27/18 - same</p> <p>1/23/18 -- ABB commended to upgrade.</p> <p>1/30/18 -- ABB recommended to upgrade.</p> <p>2/6/18 -- ABB recommended to upgrade</p> <p>2/13/18 -- ABB recommended to upgrade</p> <p>2/20/18 -- ABB recommended to upgrade</p> <p>2/27/18 -- ABB recommended to upgrade</p> <p>3/7/18 -- ABB recommended to upgrade</p> <p>3/13/18 -- ABB recommended to upgrade</p> <p>3/20/18 - awaiting ABB quote</p> <p>3/27/18 -- same</p> <p>4/10/18 -- same</p> <p>4/17/18 -- same</p>

Date	Observations	Comments	Crane 4	Crane 5	Crane 6	Dept	Resp.	Status on June 2017
41 12/16	Articulated gantries of Crane 5 and 6 result in binding of gantry wheels on rail head resulting in shattering of crane during gantry	Center the bogies/Wheels on the rail head and fix equalizers and bogies to prevent articulation of the equalizer assemblies.		X	X			Feb 19 PAG requested assistance from PBA 8/8/17 - cont. from previous reports 8/8/17 - Structural bolts on order. Req #G#4 ONH15850, GH5 ONH15852, GH6 ONH15853 Approved on PAG end currently at GSA for approval. (All bolts are on order with Fastenal) 8/15/17 - Still waiting on PO from GSA work to start as soon as materials arrive. Joe Tetradatio to follow up with GSA on status. 8/22/17 - GSA PO to Fastenal on 8/15/17 8/29-17 - Nuts and bolts on orders PO @ cut for articulating nuts & bolts on 08/18/17 9/6/17 - awaiting delivery from Fastenal 9/26/17 - Partial order in as of 09/20/2017 Roy to follow up on remaining parts order. 10/31/2017 - schedule for November 9 thru November 11, 2017 11/15/2017 - #6 Completed 11/11/2017 3/13/18 Retorque on nuts & bolts // articulating on Gantry 6
42 12/16	Trolley rails worn and joint at boom hinge is not level, rail bed worn under the rail	Remove worn rail, repair rail bed by welding and grinding smooth, install new rail with bolted short rail sections		X	X			with pop out of the miter rail head on both rails. No action, item upgraded to B priority. 5/21/17 - Crane availability 5/16/17 - welder did repairs on #5 to work on rails this weekend 5/23/17 - #5 Catwalk on A/C near a/c/pulley section, APEX landing #2 and handrails all done this way. GH5 & 6- done complete 6/6/17 - All repairs are completed 6/20/2017 - GH4 rail repair scheduled for 06/22/2017- 06/28-2017 - on going 7/6- G4- completed 7/19- ongoing to repair splice joints on boom rails 7/25/17 - On going 8/2/17- Welders waiting for an open window to perform work on Trolley rail joints on all cranes 8/15/17- on going on open windows.

Date	Observations	Comments	Crane 4	Crane 5	Crane 6	Dept	Resp.	Status on June 2017
42 12/16	B CONTINUED							12/12/17 - As needed 12/19/17 - As needed 1/3/18 - as needed 1/17/18 - as needed repairs 1/23/18 - as needed repairs 1/30/18 - as needed repairs 2/6/18 - Welders: Gantry #4 repaired/replaced broken trolley rail clip on 2/1/18 (thurs) 2/13/18 - as needed repairs 2/20/18 - as needed repair 2/27/18 - as needed repairs 3/7/18 - as needed repairs 3/13/18 - as needed repairs 3/20/18 - as needed repairs 3/27/18 - as needed repairs 4/10/18 - as needed with repairs 4/17/18 - as needed with repairs 5/1/18 - as needed with repairs
43 12/16	B Heater unit not working on gantry control box +LS SI. Dock level control station	Heater needs to be replaced to keep		X		411/414		4/4/17 - on going 8/15/17 - Per Julio Heater turned back on per Pba request to do so. 3/29/17 - Completed 100%
44 12/16	C Gatrionics (loud speaker)	Unit is needed to Establish immediate communication with crews and allow ALL members of the operation team to communicate with operators. This is a critical safety item	X	X	X	411		9/6/17 - Completed 08/8/17 - cont. from previous report 08/8/17 - kin to talk to PBA to remove from listing. Main source of communication is: connect radios: item corrected on PAG end
45 12/16	C All the gantry wheel rail sweepers are missing the rubber guards.	Sweepers can be modified for a more friendly type rail sweeper	X	X	X	414		4/11/17 - Completed

Date	Observations	Comments	Crane 4	Crane 5	Crane 6	Dept	Resp.	Status on June 2017
46 12/16	C Some wheel brakes are leaking hydraulic oil	Leaks can be corrected while replacing/upgrading to the new wheel brakes.	X	X	X	411		<p>4/4/17 - Completed</p> <p>8/8/17-cont. from previous reports</p> <p>8/8/17 -Julio purchased parts on 08/7/17</p> <p>8/15/17 -waiting for open window to install. GH6 -</p> <p>Repaired moisture cover.</p> <p>8/29/17 - GH6 staple repair on cover, GH4 & 5 ongoing assessment & repairs.</p> <p>9/26/17 - researching for dust cover boots.</p> <p>10/31/2017- Research for custom fabrication for dust cover</p> <p>11/15/17-Same</p> <p>12/12/17-welders] remove one dust cover to hae estimate to restitch/re-saw</p> <p>12/19/17-removed 1 sample from gantry crane looking to fabricate</p> <p>1/9/18- crane to check for vendor on island to fabricate part if no vendor here, research off island vendors.</p> <p>1/17/18 - same</p> <p>1/23/18 -- to verify w/ local vendor</p> <p>1/30/18 -- verify w/ local vendor</p> <p>2/6/18 - verify w/ local vendor</p> <p>2/13/18 -- verify w/ local vendor</p> <p>2/20/18 -- as needed repairs</p> <p>2/27/18 -- as needed repairs/verify local vendor</p> <p>3/7/18 -- as needed repairs</p> <p>3/13/18 -- as needed repairs</p> <p>3/20/18 -- Received quote from Coral reef; inputting requisition</p> <p>5/8/18 -- Pending requisition</p> <p>6/19/19 -- Trying to find an alternate solution</p>
47 12/16	C Trim/List/Slew screw jack dust/moisture covers form	Replace dust covers with new	X	X	X	411		

Date	Observations	Comments	Crane 4	Crane 5	Crane 6	Dept	Resp.	Status on June 2017
48 12/16	Festoon rail corroded and bottom flange significantly worn from years of service	Replace the rail with new rail beam, prime and top coat prior to installation and repair coating at field welds	X	X	X	412	8/8/17-cont. from previous reports 8/8/17-GH4 completed 08/21/17 Kin,Jorge, Julio and Roy to inspect on 08/12 and determine schedule cleaning of rails and determine next course of action 8/15/17-Jorge and Kin to do inspections. 8/22/17 - Same 9/6/17-Same 9/26/17- to be scheduled 10/31/2017- G4 completed, G5 & G6 on going 11/15/2017- Same 12/12/17- (Welders) awaiting open window for GH5 and GH6 12/19/17- Corrosion work -PM not replace GH4 completed GH5 & #6 ongoing 1/3/18- GH4 completed GH5 & G6 on going. 1/9/18- GH6 40% completed GH5 pending open window. 1/17/18 - same 1/23/18 -- 60% at Gantry 6/ gantry #5 pending open window 1/30/18 -- Gantry 6 -- 75% completed 2/6/18 -- same 2/13/18 -- corrosion: 80% gantry 6 2/20/18 -- repair festoon joint crane #4 2/27/18 -- same 3/7/18 - on going 3/13/18 -- on going 3/20/18 -- on going 3/27/18 -- on going 4/10/18 -- on going 4/17/18 -- on going 5/1/18 -- on going	
49 3/17	Gantry motor field lost fault is forced out	Review cause- is it a software problem or a hardware problem?		X	X	411	6/30/17 No progress observed 8/15/17- completed 04/18/17	
50 3/17	Trolley brake torque indicator is broken	Repair torque indicator mechanism and ensure brake torque is properly set		X		411	Completed	
51 3/17	Leg access hatch at waterside of diesel enclosure is missing a bolt	Replace stud/bolt or otherwise seal opening to prevent water intrusion into the leg			X	411	Completed	

Date	Observations	Comments	Crane 4	Crane 5	Crane 6	Dept	Resp.	Status on June 2017
C	Elevators are found not operational	Repair or replace systems not operational and re-certify	X	X	X	411		PAG to meet with Altmak to replace man lifts on two cranes. 8/15/17 - One elevator on bid. 8/29/17 - GH4, 5 & 6 - Elevator to be surveyed and replace with new. 9/6/17 - Same 9/26/17 - Elevators on bid(1) for FY18 11/15/2017 - Must Rebid 12/19/17 - Same 1/9/18 - same 1/23/18 - same 1/30/18 - same 2/6/18 - same 2/13/18 - same 2/20/18 - same 2/27/18/ - same 3/7/18 - same 3/13/18 - same 3/20/18 - same 3/27/18 - same 4/10/18 - same 4/17/18 - same 5/1/18 - same
53 3/17	Fuel tank	Fittings on fuel tanks are found with severe rust and contamination.	X	X	X	411 412		08/08/17 - Cont. from previous reports 08/08/17 - Followed up on 08/17/2017 with Vendor American Best - still waiting parts arrival per vendor part may arrive by the end of this week. 8/15/17 - Crane picked up materials to install on GH6 on open window scheduled for 08/17 and 08/18/17 8/29/17 - To replace damage electrical flex conduit. waiting on open window. 9/5/17 - GH6 completed, GH5 2 flex conduits need to be replaced. GH4 2 flex conduits need to be replaced. 9/26/17 - GH5 replaced 1 flex conduit on error pending 10/31/2017 - G4 & G5 awaiting open window 11/15/2017 - Stainless steel angle Machine Plan

Date	Observations	Comments	Crane 4	Crane 5	Crane 6	Dept	Resp.	Status on June 2017
54 5/17	Typhoon Tie-down no grease and rusting		X	X	X	411		<p>6/30/17 No progress observed</p> <p>8/8/17 - recently added item - plans to be scheduled</p> <p>8/15/17- Per E. Candoleira try Antl seize for FY18 as of now all are in operation.</p> <p>8/22/17 - GH6 - completed GHS Completed</p> <p>8/29/17- Quarterly greasing on going maintenance</p> <p>9/6/17- greased lube tie down all cranes completed on going monthly lubrication.</p> <p>9/26/17- On going monthly lubrication</p> <p>11/15/2017- On going monthly lubrication</p> <p>12/7/17- the down planning</p> <p>12/12/17 - refer to #20</p> <p>12/19/17- COMPLETED</p>
55 5/17	Missing two (2) Gantry motors - Motors 2 & 6		X	X		411		<p>6/30/17 No progress observed</p> <p>8/2/17 - recently added item. One motor currently at vendor for repairs upon pick up of motor one, second motor will be turned in to service.</p> <p>8/15/17 - Motor 1 to be picked up on 08/16/17 from Gunn Renewal company. Motor 2 is still at GMI for service. Plan to follow up. No heading to GMI to follow up 8/15/17</p> <p>8/29/17 - GMS Motor (1) installed pending one more</p> <p>9/6/17 - crane installed GMS parts but still not functioning still waiting on one more motor to complete job. Motor two at vendor for repairs</p> <p>9/26/17 - waiting for window to remove #8 motor and install #2 motor. (#2 motor will be going in for repair to vendor)</p> <p>11/28/17 - waiting for vendor to complete 2 motor</p> <p>12/12/17 - TOBANK to Pick up motor (1) 12/12/17</p> <p>12/19/2017 - P/Up 1 motor already, P/Up 1 motor next week. Next Week will be completed</p> <p>1/3/18 2 motor was picked up and went to GS. Awaiting 1 motor from vendor for GMS. 1 motor going to IMI for service once done goes to GMS</p> <p>1/9/18 - sent 2 motors for overhaul service, waiting for pick up of 2 motors sent in for service on 1/3/18</p> <p>1/23/18 - Gantry #16 pending return of motors #37 from repair shop</p> <p>1/30/18 - same</p> <p>2/6/18 - same</p> <p>2/13/18 - Gantry #6 crane installed / Motor #3 being removed motor #7 is left</p> <p>2/20/18 - Motor #3 installed/motor #7 is @ vendor</p> <p>2/27/18 - Motor #7 is ready for pick up then drop motor #3</p> <p>3/7/18 - same</p> <p>3/13/18 - same</p> <p>3/20/18 - Gantry #6 - complete; Gantry's #1 motor is coming in today to replace Motor #4</p> <p>3/27/18 - waiting for delivery for Gantry Motor for Gantry #5</p> <p>4/10/18 - bid awarded/waiting for delivery for the new 5 Gantry motors</p> <p>4/17/18 - still no delivery/ expected delivery is the end of this month</p> <p>5/8/18 - still waiting for delivery</p> <p>5/19/18 - Completed</p>

Date	Observations	Comments	Crane 4	Crane 5	Crane 6	Dept	Resp.	Status on June 2017
56 5/17	Defective Control Panel door - cannot lock properly			X				6/30/17 No progress observed 8/8/17 - recently added item - Verify with Jose which defective control panel this is. Julio to install hasp on Jbox on G5 8/15/17 - Per Julio Completed. Hasp installed week of 08/08/17
57 5/17	Slightly leaking Wheel Brake & some rusted/corroded fittings			X				6/30/17 No progress observed 8/8/17 - recently added item- SD cables have been replaced on GH4 8/15/17 - On going 8/29/17 - Ongoing 9/6/17 - still on going 9/26/17 - on going weekly 11/15/2017 - on going weekly 11/28-17 - in progress 12/12/17 - almost done to check %'s in progress 12/19/17 - 90% completed 1/9/18 - crane waiting on open window to complete job. 1/23/18 -- waiting on open window to complete job. 1/30/18 -- Julio to verify if completed. 2/13/18 -- parts ordered by Julio w/ requisition 2/20/18 -- Awaiting GSA's approval 2/27/18 -- Awaiting GSA's approval 3/7/18 -- awaiting GSA's Approval 3/13/18 -- awaiting GSA's approval 3/20/18 -- back up SD cable completed awaiting parts for spares
58 5/17	Some SO cable no more cable holder or without unistrut			X		411		

Date	Observations	Comments	Crane 4	Crane 5	Crane 6	Dept	Resp.	Status on June 2017
59 5/17	Diesel Fuel Tank with rusted outervall (4 spots)			X		412		6/30/17 Corrective action has been undertaken but surface preparation was not adequate 8/8/17 - Recently added item- Kim inspected this on 08/5/2017 corrected and completed 8/15/17 - Per Alfred Torres he observed rusting on Elbow on GH5 Roy to check and follow up on this item 08/17/17 open window. 8/29/17 - Waiting repairs on welders 9/6/17 - Same 9/26/17 - Same 11/15/2017 - Inspect to Verify 11/28/17 - completed
60 5/17	MH Aircon platform area mesh rusted and tearing apart			X		412		6/30/17 No progress observed 8/8/17 - Recently added item completed installation but needs to be painted by corrosion. Alfred T. to schedule painting 8/15/17 - Alfred Torres to schedule topcoating 9/29/17 - welders completed. Changed wire awaiting for PM to Top coat 9/6/17 - waiting on open window to top coat and primer 9/26/17 - waiting in open window 10/31/2017 - Awaiting open window to topcoat and primer 11/15/2017 - Inspect to verify (Top coat needed) 11/28/17 - completed
61 5/17	MH Aircon # 3 with exposed wiring - no cover			X		411		6/30/17 No progress observed 8/8/17 - recently added item- Julio to verify 8/15/17 - Per Julio A/C needs to be replaced Per E. Candoleta TAG OUT old unit. New unit is in GH5 Machinery House for installation. Julio to have Kin schedule installation. 8/29/17 - Alex, A/C GH5 pending electric to remove and install new A/C 9/6/17 - waiting for facility to install new A/C unit. Julio to have Frank O. create a work order 9/26/17 - follow up on work order 10/31/17 - on going 11/15/17 - Completed (unit disconnected)

Date	Observations	Comments	Crane 4	Crane 5	Crane 6	Dept	Resp.	Status on June 2017
62 5/17	Backreach RCMS Control Box platform holder (welded joint) already eaten by rust				X	414		6/30/17 No progress observed 8/8/17 - recently added item - work to be planned 8/15/17 - Roy to follow up on GH6 08/17 to check components. 9/6/17 - to verify with PBA when they arrive. What are they are talking about. 9/26/17 - Waiting on PBA 11/15/17 - Ask Jose to clarify 12/7/2017 - GH4 RCMS control welded areas planning/waiting on open window. 12/12/17 - (Welders) GH4 RCMS control box platform holder schedule Dec 19th /20th. 12/19/17 - Earl A. to follow up 1/3/18 - waiting open window due to GH6 being down. 1/9/18 - GH5 and GH6 completed waiting on open window to complete GH4 1/23/18 -- as per Welders (Roy Mendiola) scheduled for this weekend. 1/30/18 -- Welders -- Gantry #4 completed 1/25-27/18 2/6/18 -- completed
63 5/17	Trolley Tensioner Hydraulic hose holder rusted & broken - temporarily tied with straps			X		411		6/30/17 No progress observed 8/8/17 - recently added item verify work has been completed 8/15/17 - Kin still checking 8/29/17 - Completed GH5 9/6/17 - Crane replaced. Completed
64 5/17	Electrical line under Trolley Tensioner area			X		411		6/30/17 No progress observed 8/8/17 - Recently added item - Kin to verify with Jose 8/15/17 - Pending Eugene's response. 8/29/17 - Waiting for PBA findings what discrepancies about as per Julio no findings of electrical wiring under trolley tensioner. 9/6/17 - Need to verify with PBA what area they are talking about. 9/26/17 - waiting on PBA 11/15/2017 - Ask Jose to Clarify 12/12/17 - As per Jorge Javelose to verify with Jose PBA 12/19/17 - As per Kin P. to verify with Jose PBA 1/9/18 - per Jose's visit on 1/6/18 item is completed could not find discrepancies. 1/23/18 -- completed
65 5/17	Boom Hinge area Splice plate bolts/nuts & Apex pindown rusted/corroded			X		411		6/30/17 No progress observed 8/8/17 - recently added item - Alfred Torres to verify that work has been completed or on going 8/15/17 - Per Crane Mechanics work has been completed

Date	Observations	Comments	Crane 4	Crane 5	Crane 6	Dept	Resp.	Status on June 2017
C	Boom Tip Main Hoist wire rope clamp bolts/nuts no paint and rusting			X				<p>6/30/17 No progress observed</p> <p>8/8/17 - recently added item- Alfred/Kin to verify that work has been completed</p> <p>8/15/17 - Work completed 06/5/17 reinspected 06/30/17</p>
C	Walkway lights some are not working & with rusted lines			X		411		<p>6/30/17 No progress observed</p> <p>8/8/17 - recently added item - Lights are being replaced on going rusted lines are waiting on parts</p> <p>Kin to follow up on materials</p> <p>8/15/17 - on going</p> <p>8/29/17 - Ongoing</p> <p>9/6/17 - Crane replaced catwalk lights. All lights replaced in progress with conduits.</p> <p>09/26/17 - same on going</p> <p>11/15/17 - Same</p> <p>12/12/17 - burn out light bulbs replaced G#4, 5 & 6.</p> <p>12/19/17 - replace boom light bulb, pipe needs to be fabricated</p> <p>1/9/18 - on going</p> <p>1/23/18 - awaiting for open window gantry 5</p> <p>1/30/18 - on going</p> <p>2/6/18 - on going</p> <p>2/13/18 - on going</p> <p>2/20/18 - in process of planning to relocate</p> <p>2/27/18 - same - on going</p> <p>3/7/18 - same - on going</p> <p>3/13/18 - same - on going</p> <p>3/20/18 - on going</p> <p>3/27/18 - on going</p> <p>4/10/18 - on going</p> <p>4/17/18 - on going</p> <p>5/1/18 - on going</p>

66 5/17

67 5/17

Date	Observations	Comments	Crane 4	Crane 5	Crane 6	Dept	Resp.	Status on June 2017
68 5/17	Apex structural braces and welded section severely rusted - need inspection & reworks			X				6/30/17 - No progress observed 8/8/17 - recently added items 8/8/17 - braces and welded section completed, APEx jagged edges are pending, waiting on equipment rental 8/15/17 - still waiting on crane rental to begin work on jagged edges. 8/29/17 - Need crane rental to chip/assess metal lost and jagged edges. 9/6/17 - Same as #2 9/26/17 - same as #6 10/31/2017 - Awaiting Crane 11/15/2017 - Same 12/12/17 - Awaiting crane rented P O Kin Pangelman to get quote from vendor. 12/19/17 - Pending Requisition amount needed to commuted funds back to Outside labor account 1/9/18 - same 1/23/18 -- pending requisition/refer #2 1/30/18 -- same 2/6/18 -- same 2/13/18 -- refer #2 2/20/18 -- refer #2 2/27/18 -- refer #2 3/13/18 -- refer #2 3/20/18 -- refer #2 3/27/18 -- refer #2 4/10/18 -- refer #2 4/17/18 -- refer #2
69 5/17	Apex broken electrical lines and limit switches need to be check and repair works			X		411		3/7/18 -- refer #2

Priority Legend

A	High
B	Medium
C	Low

Status Legend

	On Hold
	In Progress
	Completed

Upcoming Planned Projects

1. Wire Rope Change Out
2. Hoist Motor Change Out
3. Generator Change out
4. Operator's cab Change out
5. Trolley Rail Change out
6. Elevator replacement



PORT OF GUAM

ATURIDAT I PUETTON GUAHAN

Jose D. Leon Guerrero Commercial Port

1026 Cabras Highway, Suite 201, Piti, Guam 96925

Telephone: 671-477-5931/35 Facsimile: 671-477-2689/4445

Website: www.portguam.com



Lourdes A. Leon Guerrero
Governor of Guam

Joshua F. Tenorio
Lieutenant Governor

Human Resources Division Report

June 26, 2019

Port Authority Travel

Period Covering May thru June 2019

- JD Edwards EnterpriseOne Financial Management Software Presentation, May 20-23, 2019, San Francisco, CA
- Port Revenue Bonds Meeting – Citi & Orrick, May 22-24, 2019, San Francisco, CA
- Hazwoper/Hazmat Train the Trainer Seminar, June 10-14, 2019 Tampa, FL
- FY2019 Annual National Homeland Security Conference, June 17-20, 2019, Phoenix, AZ (*100% federally funded*)
- AAPA Workforce Development Summit, June 25-27, 2019, Long Beach, CA