



NEWSLETTER

PORT AUTHORITY OF GUAM

APRIL 2026

Board of Directors

- Dorothy P. Harris**
Chairperson
- Conchita S.N. Taitano**
Vice Chairperson
- Fe Valencia-Ovalles**
Board Secretary
- Mark B.C. Mendiola**
Board Member

Port Management

- Rory J. Respicio**
General Manager
- Dominic G. Muña**
Deputy General Manager:
Operations
- Pacifico R. Martir**
Deputy General Manager:
Administration & Finance

Inside this Issue

- MARAD Funds Cranes
- Crane Modernization
- Adelup Announces Crane Funding
- Port Strong through the Storm
- Invest Guam 2026
- F. Arriola Nomination
- PUGG Collaboration
- Port Beach and Family Beach Resources
- Employee Quarterly Awards
- Photo Highlights
- Birthdays

Port Secures Nearly \$60 Million MARAD Award for New Gantry Cranes



The Port Authority of Guam has received official notification from the U.S. Department of Transportation Maritime Administration confirming the award of nearly \$60 million in federal funding for the acquisition of three new ship-to-shore gantry cranes, marking a major milestone in the Port’s modernization efforts.

The funding, awarded through the Maritime Administration’s Port Infrastructure Development Program, will support the procurement, fabrication, delivery, and installation of three new cranes to replace the Port’s existing units, which are more than 40 years old and approaching the end of their service life.

The project, titled Strengthening Supply Chain with New Port Cranes,

represents a total investment of approximately \$74.5 million, including \$59.6 million in federal funding. The Port Authority of Guam will fund its required local match of approximately \$14.9 million through its existing reserves.

Port General Manager Rory J. Respicio and Port Authority of Guam Board Chair Dorothy P. Harris joined Governor Lou Leon Guerrero, Lt. Governor Josh Tenorio, and Congressman James Moylan on Monday, April 27, for a formal announcement at Adelup recognizing the award and its significance to Guam’s economy and national security.

“This official notification confirms what our team has been working toward for years,” said General Manager Rory

Story continues on pg. 2



originally manufactured in the 1980s and acquired secondhand in 2009. While the existing cranes have been maintained and kept operational, engineering assessments have confirmed they must be replaced to ensure long-term reliability and safety.

As the only commercial seaport on Guam, the Port handles more than 90 percent of the island’s goods, including food, fuel, medical supplies, and construction materials. The new cranes will significantly enhance cargo handling capacity, improve vessel turnaround times, and strengthen the Port’s ability to support both commercial activity and military logistics operations across the region.

With official notification now received, the Port is prepared to move immediately into the next phase of the project. The Invitation for Bid is expected to be issued in the coming weeks, with a multi-step procurement process to follow.

“This is a transformative investment for Guam,” said Respicio. “It strengthens our infrastructure, supports economic growth, and ensures the Port remains ready to meet the needs of our island and our region for decades to come.”

The Port Authority of Guam will continue to work closely with federal partners to advance the project and will provide updates as the procurement process moves forward.



J. Respicio. “I want to recognize and thank our Port Strong employees for the incredible team effort that made this award possible and for continuing to keep our existing cranes operating on our docks every day. Their work is what keeps this port moving.”

Respicio added that the Port is also grateful to the U.S. Maritime Administration, Governor Lou Leon Guerrero, Lt. Governor Josh Tenorio, Congressman James Moylan, the Port Authority Board of Directors, military partners, industry partners, and federal and technical partners including OLDCC, WSP, and Liftech for their continued support and collaboration in advancing the project.

“These will be the first new gantry cranes ever procured by the Port,” Respicio said. “The procurement will be structured to evaluate one crane plus shipping, two cranes plus shipping, and three cranes plus shipping to determine overall cost, with the goal of acquiring all three new cranes. Once a contract is awarded, we estimate approximately two years for manufacturing, delivery, and installation. This investment is about strengthening our operations, improving efficiency, and ensuring we can continue to serve as the island’s lifeline and a critical hub for national defense in the Indo-Pacific.”

The new cranes will replace aging equipment



Port of Guam Gantry Crane Modernization

Overview

The Port Authority of Guam is advancing a critical infrastructure modernization effort to replace its aging ship-to-shore gantry cranes, ensuring continued operational reliability, cargo efficiency, and support for both commercial and national security needs. The acquisition of new ship-to-shore gantry cranes will mark the first time in the Port's 50-year history as an autonomous agency that it will procure new cranes. All existing cranes were previously second-hand equipment acquired from other U.S. ports.

Current Crane Conditions

The Port's existing gantry cranes are more than 40 years old. Manufactured in 1983 and 1984, the cranes were originally operated at the Port of Los Angeles before being acquired by the Port of Guam, refurbished, and placed into service in 2009. Based on engineering assessments and consultant reports, the cranes will reach the end of their expected service life by 2029 and must be fully replaced to ensure continued safe and efficient operations.

Planning and Early Development

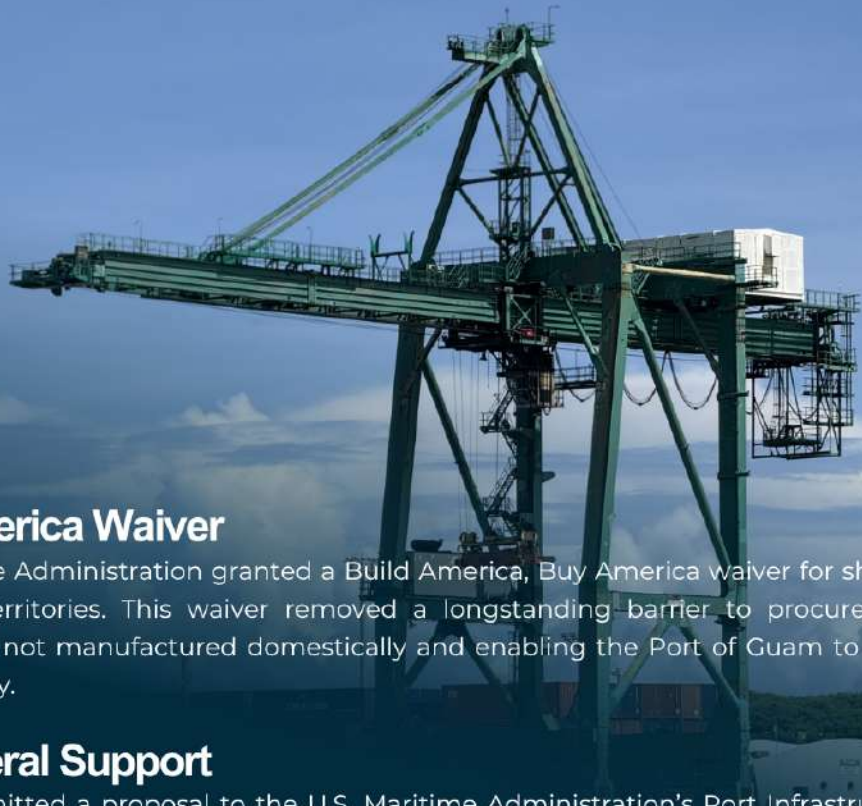
Work to develop specifications for new cranes began in 2019 in coordination with engineering consultants and Port operators. These efforts established technical requirements aligned with operational needs and long-term modernization goals, positioning the Port to move forward when funding became available.

Funding Efforts and Challenges

Since 2019, the Port has pursued multiple federal funding opportunities to support crane replacement, including applications to the Economic Development Administration, USDOT MEGA program, and INFRA grant program. Several early applications were not successful due to funding limitations and regulatory constraints, including compliance challenges related to Build America, Buy America requirements, which restricted procurement of equipment not manufactured in the United States.

Board Action and Procurement Readiness

In April 2024, the Port Authority of Guam Board of Directors approved the procurement of up to three new ship-to-shore gantry cranes through Resolution No. 2024-01, establishing a strategic path forward for crane replacement and funding reallocation. In October 2024, the Board further approved a multi-phase procurement process under Resolution No. 2024-16, ensuring a compliant and structured approach to acquisition. The procurement package has since been completed and is ready to be issued.



Breakthrough: Buy America Waiver

In February 2025, the U.S. Maritime Administration granted a Build America, Buy America waiver for ship-to-shore gantry cranes in Pacific territories. This waiver removed a longstanding barrier to procurement, recognizing that these cranes are not manufactured domestically and enabling the Port of Guam to move forward with its acquisition strategy.

PIDP Funding and Federal Support

In September 2025, the Port submitted a proposal to the U.S. Maritime Administration's Port Infrastructure Development Program for the acquisition of three new gantry cranes under the project titled Strengthening Supply Chain with New Port Cranes. The project will fund three new Ship-to-Shore (STS) gantry cranes to replace aging units from the 1980s, strengthening Guam's supply chain and ensuring reliable port operations. The total project cost is \$74,586,792, with \$59,669,434 requested in federal funding and \$14,917,358 in non-federal match.

The Port's crane project has also advanced through federal advocacy through active engagement by Governor Lou Leon Guerrero, Lt. Governor Josh Tenorio, Guam's Delegate to Congress, senators, and other local and federal partners including the Department of War, the U.S. Maritime Administration (MARAD), the Federal Emergency Management Agency (FEMA), the Office of Local Defense Community Cooperation (OLDCC), and the U.S. Coast Guard, to align the Port's modernization with civilian and military buildup mitigation efforts.

On March 6, 2026, Port General Manager Rory J. Respicio and Port Board Vice Chair Conchita Taitano met at the U.S. Maritime Administration headquarters with Sang H. Yi, Deputy Administrator of the Maritime Administration, U.S. Department of Transportation, along with Peter Simons, Director of MARAD's Office of Port Infrastructure Development, to discuss the Port of Guam's infrastructure priorities and the Port's critical role in supporting regional commerce, national security, and energy logistics in the Indo-Pacific.

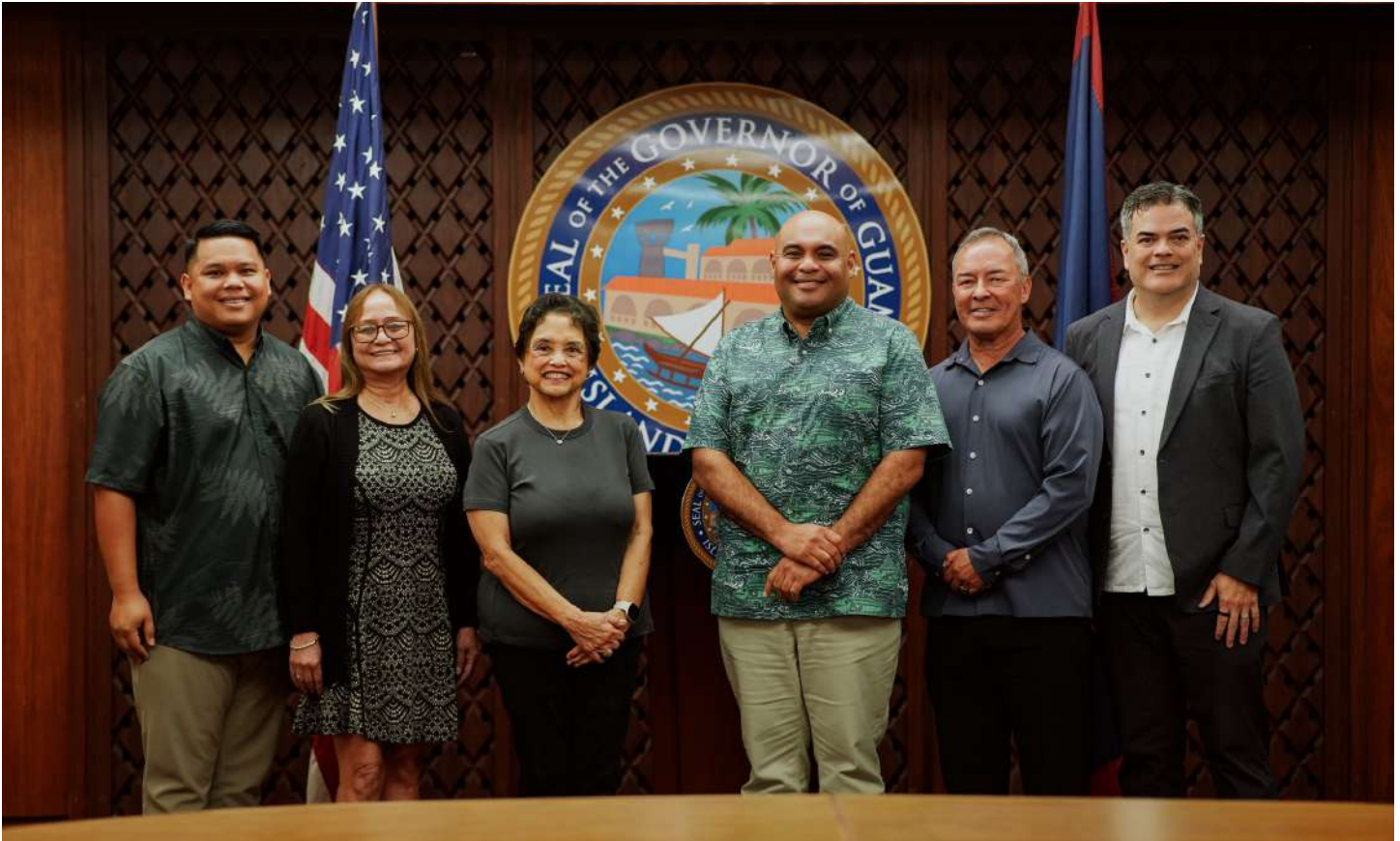
What Comes Next

With funding secured, the Port is prepared to move immediately into procurement. The Invitation for Bid is expected to be issued in the coming weeks. The procurement process will follow a multi-step evaluation and award process and is expected to take several months to complete. Once awarded, the project timeline includes approximately two years for manufacturing, assembly, transport, and installation of the new cranes.

Looking Ahead

The replacement of the Port's gantry cranes represents one of the most significant infrastructure investments in its history. As the only commercial seaport on Guam, handling more than 90 percent of the island's goods, the Port remains committed to building a stronger, more resilient, and future-ready operation.

Administration Announces \$60 Million Grant For New Port Authority Gantry Cranes



Perseverance is paying off for the people of Guam by way of a \$60 million grant toward the cost of bringing new gantry cranes to the Port Authority of Guam (PAG).

On April 27, 2026 Governor Lourdes Leon Guerrero and Lt. Governor Joshua Tenorio were joined at Adelup by Congressional Delegate James Moylan and Port Authority of Guam General Manager Rory Respicio for the announcement that the U.S. Department of Transportation Maritime Administration (MARAD) has approved the funding.

“What a great way to start off a new week,” said Governor Leon Guerrero. “I want to congratulate everyone who has worked on this issue over the past several years. It is a significant milestone.”

The governor thanked Delegate Moylan for his role in getting a direct funding request for crane replacement through the Congress Community Project Funding program.

“Replacing our current gantry cranes is much more than an upgrade,” said Lt. Governor Joshua Tenorio. “These cranes are a strategic necessity and an integral part of the contemporary 21st-century economic foundation we are laying to

move our island forward.”

An extensive grant application submitted by the PAG to MARAD stated a compelling case for the cranes as a fundamental component of the port’s supply chain architecture.

The Port Users Guam Group, which encompasses shipping, logistics, maritime services, industry and government partners, including the military, will see immediate improvement in capacity and efficiency at the seaport once the cranes are in place and operational.

“This is another step towards achieving increased resilience and capacity at the port, where more than 90% of all goods used by local businesses and consumers are landed,” Lt. Governor Tenorio noted. “Securing new cranes will be a textbook example of how public policy works best when it facilitates solutions across stakeholder spectrums.”

“Our persistence demonstrates to the business community, federal and regional partners, the military, and investors that we are serious about strengthening Guam as a strategic hub for the Indo-Pacific, beyond national defense and security,” the Governor said.

Port Strong Through the Storm

When Typhoon Sinlaku approached Guam in April, the Port Authority of Guam moved early and decisively to protect the island's most critical lifeline.

Preparation began days before the storm's arrival. Port Strong employees mobilized across all divisions, securing gantry cranes, lowering container stacks, and preparing facilities and equipment to withstand severe weather.

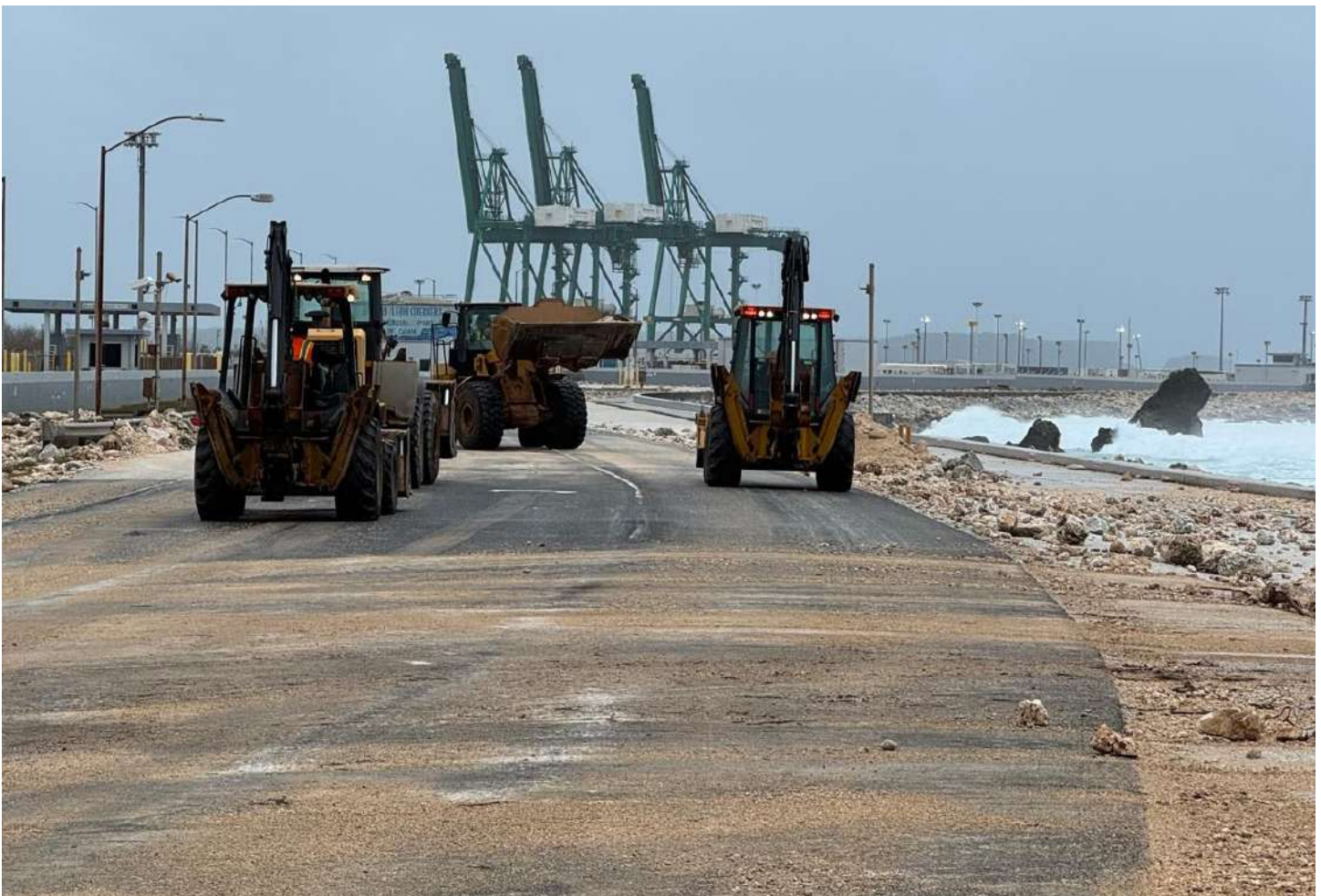
As conditions intensified, the Port escalated through U.S. Coast Guard heavy weather conditions, moving from X-Ray to YANKEE, where inbound vessel traffic was halted and cargo operations were brought to a stop.

By the evening of April 12, the Port entered Condition ZULU, fully securing operations as typhoon-force winds approached. All vessel and cargo activity ceased, and the Port shifted into full lockdown with a focus on safety and protection of personnel and infrastructure.

Following the storm, the Port moved quickly into recovery mode.



Story continues on pg. 7



Teams began comprehensive damage assessments across all operational areas, evaluating cranes, lighting systems, fenders, and critical infrastructure to determine readiness for reopening. At the same time, restoration of access routes allowed fuel operations to resume in a limited capacity, supporting essential services across the island.

Even before vessel operations resumed, Port employees worked around the clock to move cargo that had already been discharged into the community. Critical goods including construction materials, vehicles, and supplies continued flowing despite ongoing recovery conditions.

By April 18, the Port transitioned back to Condition WHISKEY, allowing modified operations. A navigational issue at the harbor entrance temporarily delayed vessel arrivals, requiring coordination with the U.S. Coast Guard before safe transit into Apra Harbor could resume.

On April 19, vessel operations resumed.

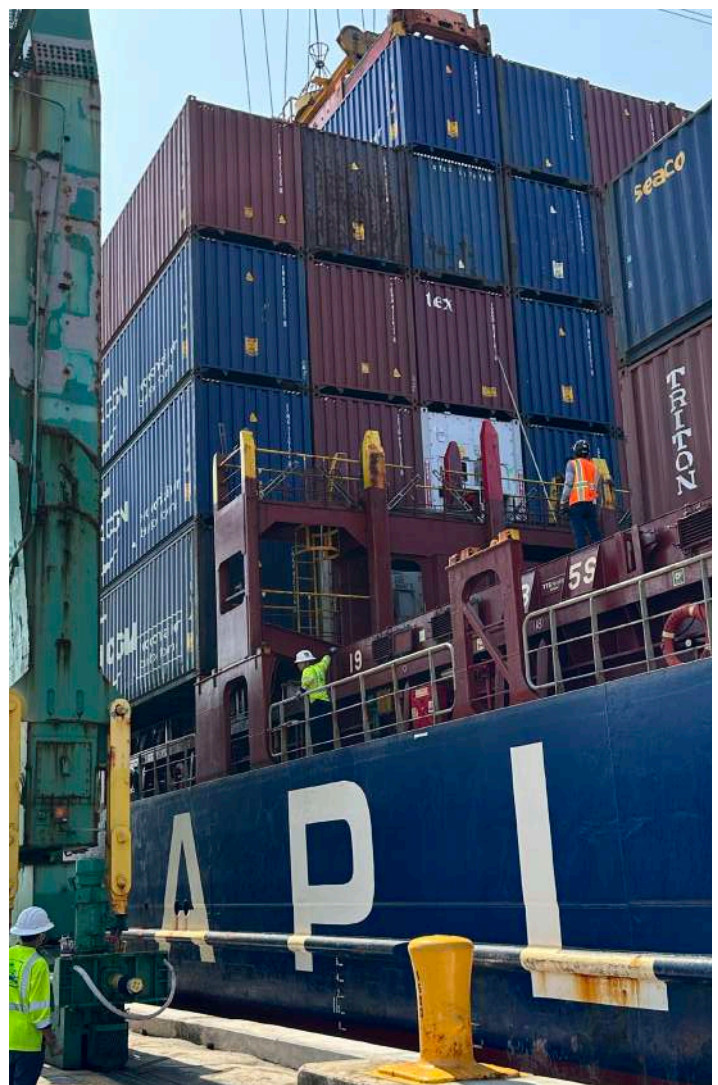
The APL Oceania became the first major vessel to berth following the storm, carrying more than 500 containers and critical breakbulk cargo, including food, water, medical supplies, and construction materials essential to Guam's recovery. Cargo operations began immediately, supported by Gantry Crane 4 and the vessel's onboard gear.

The following day marked another key milestone.

Fuel offloading operations began at the F1 Fuel Pier with the arrival of the MT ZHUO HANG GUANG RONG, delivering ultra-low sulfur diesel fuel to support power generation, transportation, and ongoing recovery efforts across the island. At the same time, cargo operations continued, and the harbor was fully reopened to all commercial traffic.

As operations accelerated, the Port implemented a coordinated vessel sequencing strategy to maintain steady cargo flow. Over an extended operating window of more than 46 hours, Port employees discharged 523 containers from the APL Oceania, including 497 imports for Guam, along with critical breakbulk cargo. Operations continued into the night and early morning hours to maximize productivity and move as much cargo as possible.

Story continues on pg. 8



By April 21, operations had stabilized into a continuous flow. The Matson Lurline arrived as the APL Oceania departed. With additional equipment brought back online, the Port sustained cargo throughput to support both Guam and the region.

That momentum continued into April 22, as the Port maintained cargo flow through back-to-back Matson vessel operations. The Matson Lurline completed approximately 15 hours of cargo operations, discharging 366 containers, including 274 imports and 92 transshipment containers, along with 126 units of inbound breakbulk cargo consisting of vehicles and heavy equipment.

Shortly after its departure, the Daniel K. Inouye berthed at the Port and began cargo operations, with hundreds of inbound and outbound containers scheduled for discharge and loading. This continuous sequencing of vessels reflects the Port's focus on maintaining efficiency, minimizing delays, and ensuring the steady movement of goods into and out of Guam while supporting broader regional recovery efforts.

Behind these operations was the workforce driving recovery.

Beginning April 20, the Port initiated daily meal support for employees, providing home-cooked meals so teams could remain focused on the demanding, around-the-clock cargo operations. This effort ensured employees were supported as they worked extended hours under challenging conditions.

"This was an all hands effort from preparation through recovery," said General Manager Rory J. Respicio. "Our Port Strong team stepped up at every stage, securing the Port ahead of the storm, assessing conditions immediately after, and then moving critical cargo without delay. The Port is Guam's lifeline, and our responsibility is to keep that lifeline moving when our community needs it most."

From preparation to recovery, and now into sustained operations, the response to Super Typhoon Sinlaku demonstrated the strength, coordination, and resilience of the Port Authority of Guam and its people.



Invest Guam Symposium Strengthens Investor Confidence in Port

The Port Authority of Guam joined Governor Lou Leon Guerrero and a delegation of Government of Guam agencies in New York City for the Invest Guam Symposium 2026 held on April 29 and 30, engaging directly with current bondholders and potential investors to strengthen confidence in Guam's financial outlook and future capital initiatives.

Led by Governor Lou Leon Guerrero, the delegation included the Port Authority of Guam, the Bureau of Budget and Management Research, the Guam Economic Development Authority, and other government agencies with bond financing programs. The symposium was designed to strengthen investor relationships, provide transparency on Guam's financial condition, and highlight future capital investment needs across government agencies.

The Governor opened the symposium on April 29, setting the tone for the two-day engagement and highlighting Guam's economic resilience, strategic importance, and continued investment in infrastructure. Each participating agency followed with formal presentations outlining their respective financial positions, capital programs, and long-term strategies as part of a coordinated effort to present Guam's credit profile to investors.

The Port Authority of Guam presented its role as the island's only commercial seaport and a critical component of both the local economy and national security, emphasizing that more than 90 percent of Guam's goods move through the Port. The presentation highlighted the Port's strategic location in the Indo-Pacific, its role in supporting military buildup, and its importance as a regional transshipment hub.

Port leadership also outlined its financial performance, including stable revenues, improving debt service coverage ratios, and a disciplined approach to expense management. The Port emphasized its strong regulatory framework, including full tariff approval oversight, and its ability to maintain operations through major disruptions, including the COVID-19 pandemic and recent typhoons.

In addition, the Port detailed its capital improvement program, which includes a pipeline of infrastructure investments focused on cranes,



wharf upgrades, and fuel resiliency, supported through a balanced funding strategy of grants, bonds, and internal resources.

On April 30, the delegation participated in one-on-one meetings with investors, providing an opportunity for more detailed discussions on financial performance, capital planning, and future borrowing needs. These meetings are a key component of the symposium, allowing for direct engagement with investors and deeper discussion on Guam's credit outlook and financing strategies.

"This symposium was an important opportunity to reinforce confidence in the Port and the Government of Guam," said General Manager Rory J. Respicio. "We were able to clearly demonstrate that the Port is an essential, resilient asset with strong financial fundamentals and a clear path forward for strategic investment. Our message to investors is simple. The Port performs, the Port delivers, and the Port is positioned for growth."

The Port Authority of Guam continues to engage with financial partners and stakeholders as it advances critical infrastructure investments that support economic growth, regional connectivity, and national security.



Governor Nominates Frank P. Arriola to Port Board of Directors

The Port Authority of Guam welcomes the nomination of Frank P. Arriola to serve on its Board of Directors, following his selection by Governor Lourdes A. Leon Guerrero.

The Governor formally nominated Arriola on April 1, 2026. His confirmation hearing is scheduled for Monday, May 11, 2026 at 2:00 p.m. at the Guam Congress Building.

Arriola currently serves as Deputy General Manager of the Guam Visitors Bureau and brings extensive leadership experience in both the private and public sectors. His background reflects a long-standing commitment to economic development, workforce advancement, and public service.

In addition to his role at GVB, Arriola previously served on the Guam Community College Board of Trustees representing Business, Industry, and Employer Organizations, where he supported workforce development initiatives and strengthened partnerships between industry and education.

His professional experience includes leadership roles in tourism, insurance, and real estate, along with participation in executive training programs through the American Association of Community College Trustees, the Asia Pacific Association for Fiduciary Studies, and other leadership organizations.

With a background that spans economic development, workforce training, and industry



engagement, Arriola brings valuable perspective to the Port as it continues advancing modernization initiatives and strengthening its role in supporting Guam's economy.

"We appreciate the Governor's nomination of Mr. Arriola and look forward to his confirmation hearing," said General Manager Rory J. Respicio. "His experience in economic development and workforce partnerships will add meaningful perspective as the Port continues to advance modernization efforts and support Guam's long term growth."

The Port Authority of Guam looks forward to working with Arriola pending confirmation and appreciates his willingness to serve.

Port Meets with Port Users Group to Strengthen Collaboration

The Port Authority of Guam met with members of the Port Users Group of Guam (PUGG) on April 2, 2026 to provide updates, strengthen collaboration, and discuss ongoing efforts to enhance operational efficiency, infrastructure reliability, and long-term sustainability at Guam's only commercial seaport.

Port General Manager Rory J. Respicio, Deputy General Manager for Operations Dominic G. Muna, and Chief Financial Officer Jose B. Guevara III participated in the meeting, engaging directly

with industry stakeholders to address key topics related to port operations, maintenance, and future planning.

Discussions highlighted the Port's continued commitment to maintaining safe, efficient, and resilient operations through ongoing investments in facility and equipment maintenance. Port officials outlined the scope of maintenance efforts across buildings, utilities, cargo handling equipment, and structural systems, emphasizing proactive measures such as corrosion control, preventative maintenance, and in-house repair capabilities that support uninterrupted service to the island.

The Port also provided clarification on workforce structure and operations, noting the strategic use of casual employees to support peak vessel activity and ensure operational flexibility. Leadership emphasized that this approach allows the Port to efficiently manage fluctuating cargo volumes while maintaining service reliability for customers.

Updates were shared on equipment maintenance outcomes and ongoing efforts to extend the useful life of critical assets. The Port continues to prioritize maintenance and repair programs that maximize operational readiness while planning for long-term capital improvements.

Financial discussions focused on the Port's balanced approach to managing rising operational



costs while maintaining stable revenue levels. Operational processes were also reviewed, including cargo handling workflows, labor coordination, and vessel servicing schedules. The Port emphasized its continuous efforts to streamline operations, improve turnaround times, and maintain high service standards for all port users.

Respicio underscored the importance of ongoing collaboration with PUGG and the Port's commitment to transparency and partnership.

"Our port users are essential partners in everything we do," said Respicio. "This discussion reflects our shared goal of keeping the Port of Guam strong, efficient, and ready to support our island's economy and national security mission. We will continue working closely with our stakeholders to ensure we are aligned, responsive, and moving forward together."

The PUGG is a collaborative body comprised of key port stakeholders, including shipping lines, agents, stevedores, trucking companies, freight forwarders, and other maritime industry partners. The group serves as a forum for open dialogue and coordination between the Port Authority of Guam and its users, providing feedback, sharing operational insights, and working together to improve efficiency, service reliability, and overall port performance.

Family Beach and Port Beach Information

[HOME](#) / [COMMUNITY](#) / [FAMILY BEACH AND PORT BEACH INFORMATION](#)



The Port Authority of Guam has introduced new improvements to enhance public access to Family Beach and Port Beach, including the launch of a dedicated information webpage and the implementation of a Same Day Temporary Beach Access Pass.

The new Family Beach and Port Beach information page, now available on the Port's website, serves as a centralized resource for residents and visitors. The page provides clear, easy-to-access details on public access schedules, permitted and prohibited activities, and permit requirements, allowing users to better plan their visits in advance.

In addition, the webpage includes step-by-step instructions for applying for permits through the Port's online system, streamlining the process and improving convenience for the public.

Complementing this effort, the Port has also implemented an updated Beach Access Policy that allows for the issuance of a Same Day Temporary Beach Access Pass. Individuals who arrive without a pre-approved permit may now be issued a same-day pass by the Port Police Division, subject to space availability.

"This update is about giving the public the tools they need to plan ahead," said General Manager Rory J. Respicio. "With clearer information and more flexible access, visitors can better prepare for their time at Family Beach and Port Beach."

Individuals issued a Same Day Temporary

Beach Access Pass are required to complete payment on the next business day at the Port Authority of Guam Finance Service Center. Failure to submit payment may result in restrictions on future access and possible prohibition from Port property.

Family Beach and Port Beach are located within Port jurisdiction, and all visitors must comply with established rules, carry valid identification, and adhere to designated hours and activity guidelines.

The Port encourages the public to review the new webpage prior to visiting to ensure a safe and smooth experience.

These initiatives reflect the Port Authority of Guam's continued commitment to improving communication, enhancing public awareness, and providing convenient, responsible access to community spaces.

The Port also acknowledges its Commercial Division for its work in developing and compiling the information featured on the new Family Beach and Port Beach webpage.

For more information, visit: <https://www.portofguam.com/community/family-beach-and-port-beach-information>.



When a Permit is Required

A permit is required for the following activities:

- Picnicking, Organized gatherings or group events
- Cookouts (BBQ), or the use of canopies, tents, or other equipment
- Overnight camping (by approval only)
- Private use of Port Beach

Casual public use, such as swimming at Family Beach without any setup, does not require a permit. This use is limited to individual or family use only.



How to Obtain a Permit

- Complete the Beach Permit Application form.
- Submit via email to commercial@portofguam.com.
- Commercial Division confirms availability.
- Payment is made at the Port Authority Administration Building (1st Floor).
- Permit is issued upon payment confirmation.

Please note: Reservations are not guaranteed until payment is completed.

Employee Quarterly Awards - FY2026 1st Quarter

Employee of the Quarter

Category 1:



Matthew Mendiola, Supply Technician I

Category 2:



David Meno, Equipment Operator II

Supervisor of the Quarter

Category 1:

No Submission

Category 2:



Vincent Asanoma, Transportation Leader

Outstanding Work Center of the Quarter

Category 1:



Planning Division

Category 2:



Terminal Division

Good Housekeeping Work Center of the Quarter

Category 1:



General Manager's Office

Category 2:



Welding Section

Photo Highlights

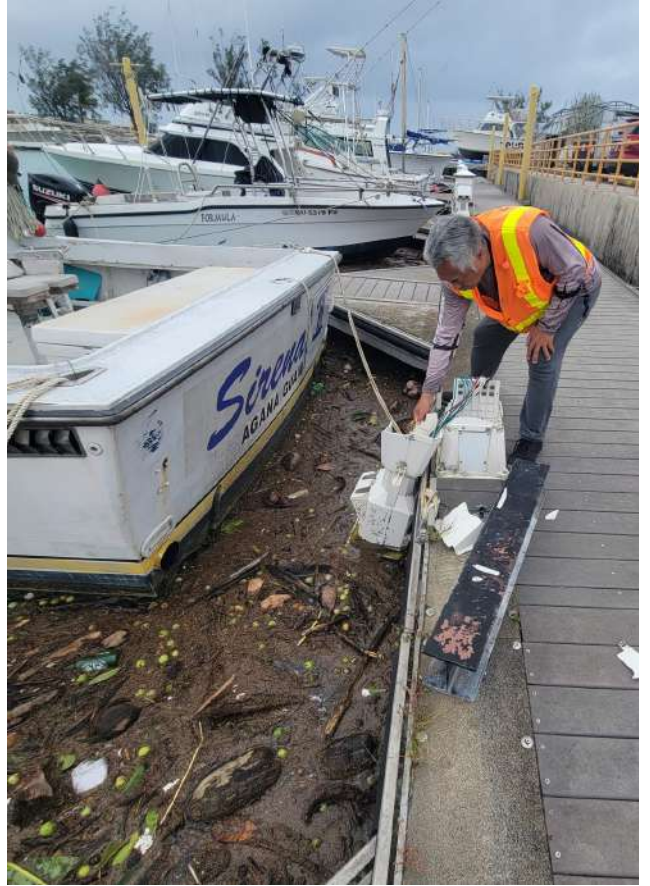


Photo Highlights Continued



Congressman Moylan's team on site capturing yard operations in action, highlighting the scale and momentum behind the award of nearly \$60M to the Port for three new cranes to boost capacity and keep cargo moving efficiently.

IMPORTANT REMINDER!

COAST GUARD INSPECTION

June 2, 2026

Contact the Safety Division
for more information

Remember And Honor

MEMORIAL DAY

26 MAY 2026

Photo Highlights Continued



May Birthdays

HAPPY
Birthday

Gregorio L. Babauta	Herbert C. Fukuda
Richard P. Flores	Christopher John D. Aguon
Ken A. Yoshida	Michael C. Concepcion
Frank C. Manibusan	Jolene M. Camacho
Rhoda B. Casupang	Edward B. Babauta Jr.
Jacob Q. Aquiningoc	James S. Castro
Romeo R. Peregrino	Avin Michael S. Fejeran